

Portsdown & Purbrook

PROFILE



CONTENTS

Bishop's Welcome	3
Archdeacon's Welcome	4
Simeon's Trustees Welcome	5
The Role	6
The Parish of Portsdown and Purbrook	8
Our Vision for the Future	11
Parish Funding	12
Safeguarding	12
Attendance	14
Parochal Church Council (PCC)	15
Mission Support	16
Christ Church, Portsdown	17
St John the Baptist, Purbrook	23
Parish Ministry Team	28
Location	29
Housing	30
Conclusion	32
Appendix	33
Diocese Vision and Strategy	34
Introduction to the Diocese of Portsmouth	36

BISHOP'S WELCOME

I am delighted you are seeking to discern whether Jesus is calling you to serve with His beautiful people in Portsdown and Purbrook. Be assured of our prayers in the diocese for you and those you love as you step into a time of discerning.

The Diocese of Portsmouth is a community of communities focused and centred in Jesus, and seeking the Father's heart of love for the world. We shall be praying for you as you discern your next step of faith in response to God's faithfulness.

With love, in Christ,

A handwritten signature in black ink that reads '+Jonathan Portsmouth'. The signature is written in a cursive style and is underlined with a single horizontal stroke.

**THE RT REV JONATHAN FROST,
BISHOP OF PORTSMOUTH**

'As God's chosen ones, holy and beloved, clothe yourselves with compassion, kindness, humility, meekness, and patience. Bear with one another and, if anyone has a complaint against another, forgive each other; just as the Lord has forgiven you, so you also must forgive.'

Colossians 3: 12-13

a Rejuvenating community of Jesus-centred, Kingdom-seeking disciples

ARCHDEACON'S WELCOME

When supporting a parish during a vacancy, I encourage churches to create a profile that honestly reflects both the joys and the challenges of their shared life. It is always illuminating to see how such a profile corresponds with my own experience of meeting the people and worshipping with them. In this case, it is reassuring to find that what is described on the page is clearly evident in the life, character and commitment of the community.

As you read this profile, I hope you will be encouraged to reflect prayerfully on whether God may be calling you to this ministry. The two churches have their own distinct styles and traditions, yet they support one another well and share a common vision for the future. There is a strong sense of mutual respect, a united PCC that works collaboratively, and a shared desire to deepen faith and to grow engagement with children, young people, and their families.

An exciting area of future development is the potential for a pioneer presence on the Berewood estate within the parish. The Diocese is committed to appointing a 0.5 post, with housing, to develop ministry there in partnership with this role. The process for advertising this post will begin once this appointment has been made, and it is hoped that the new Vicar will play an active part in the discernment and shaping of this ministry.

I very much hope you will consider exploring this opportunity further, and I hold all those involved in this process in my prayers.

Ven Bob White
Archdeacon of Portsdown



SIMEON'S TRUSTEES WELCOME

Greetings! We are encouraged that you are seeking to discern God's call by considering the possibility of ministering in Portsdown and Purbrook. We will be praying for you, and, if it is helpful, are very open to an exploratory conversation about the post.

This role presents a varied and stimulating opportunity to enjoy a missional and rich ministry within communities who love and respect each other's gifts, and have vision for the future. As trustees we value Christ-led, forward-looking leadership, focused on developing discipleship, and which is rooted in a non-anxious trust in the love and presence of God. These values are very much at the heart of this profile.

If you have a growth mindset, an enthusiasm for people in all their diversity, and a passion for sharing good news intergenerationally across traditions you could well be at home here, and God could use you to lead people who are open, receptive and hopeful.

May He bless you as you seek to listen for His voice.

In Christ,



Rev Guy Donegan-Cross, Simeon's Trustees

THE ROLE

We are praying for a new and enthusiastic, passionate, and prayerful Incumbent and minister to join our parish and lead our two churches.

Our new Incumbent will also be Curate within the nearby Church of the Good Shepherd, part of our local Church cluster.

This role will also include the leadership of a new part-time Pioneer Minister leading engagement with the community on the growing neighbouring Berewood development. A separate profile of this role is available.

Our new Incumbent will be a strategic leader for growth in our parish, alongside a strong parish team of clergy and lay ministry. They will:

- be a valued member of our Christian and local community
- develop stronger community engagement, family-focused ministry, discipleship and multigenerational worship.





- have a solid biblical approach with traditional and modern outlooks to our worship.
- be welcomed at the heart of our parish and expected to be part of our parish social activities.

We are seeking a leader that will actively pursue the development of our current congregation and our outreach into the Parish both through supporting our current activities and in new and exciting ways. We hope to continue and expand our offering of our home groups and Easter, Advent and other courses such as Alpha, Pilgrim or Christianity Explored.

The recent combination of two parishes to create the new Parish of Portsdown and Purbrook, with two congregations who are working as one church family while maintaining the range of services and activities offered across two churches, creates a wonderful opportunity to welcome a range of new members and grow our Christian community on the sunny South Coast.



THE PARISH OF PORTSDOWN AND PURBROOK

The Village of Purbrook is part of the South Hampshire lowlands, Purbrook forms part of a large conurbation north of the city of Portsmouth and is sandwiched between the A3 road to the west and the A3M motorway to the east.

This urban area lies within the bounds of the former Forest of Bere that occupied the heathland and clay soils of the South Hampshire Lowland. The heathland areas were lightly settled and there were hamlets and small farmsteads across the clay areas associated with small irregular enclosures.

In the early nineteenth century large parts of the forest were sold and the land freed for development. Initially this took the form of ribbon development alongside the A3, an important route from London to the Portsmouth Naval Dockyard.

Administratively it is part of the Borough of Havant, on the east side of the borderline between Winchester City Council and Havant Borough Council. It comprises parts of two Local Authority Wards: Purbrook and Stakes. The area is currently part of the Government's Local Authority Reorganisation and it is likely that the Parish will be part of the larger Council covering Portsmouth, Havant, Fareham and Gosport.

Purbrook is thought to have been founded on the site of clear water access, Puke Brook or Pur Brook. An 18th century toll road ran through the village and busy inns, founded with stabling, reflected the popularity of this important route from London to the Portsmouth Naval Dockyard. Gradual "Ribbon" development

was followed by extensive planned building starting in the 1920's when transport needs were met by the Portsdown and Horndean Light Railway taking the route of the London Road which dissects Purbrook.

Purbrook now merges seamlessly with Waterlooville to the north and Widley to the south, Berewood to the west and Bedhampton to the east. St John's Church, the church hall and the vicarage sit in St John's conservation area and are just a few miles south of the South Downs National Park.

From a 1930's population of less than 2000, Purbrook now houses approximately 10,000 persons.

Purbrook is served by Hampshire PCT, the largest PCT in the country. The nearest hospital is Queen Alexandra, ½ mile south of the parish and includes a busy Accident and Emergency department.

The Rowans Hospice is located north of Purbrook Heath where some parishioners play an active role in voluntary help and fundraising this well regarded but under-resourced facility.

NEWLANDS AND BEREWOOD DEVELOPMENT

Part of a nationwide plan reflecting the demand for housing in the Southeast of England, on the West of Waterlooville is the Newlands and Berewood development. Part of the development is within the parish of Portsdown and Purbrook and represents a considerable opportunity for the new incumbent. Within the diocesan strategic plan is a Pioneer Minister who will come under the parish. A three-bedroomed house has already been purchased for this new role to ensure a significant Anglican voice contributes to the development of this new community.

Berewood includes provision for adequate social housing, two new primary Academies under the governance of Chichester University, 12.5 hectares of employment land to build on the successful industrial development in the south of Hampshire, a "local" centre, open spaces, and recreational play areas. Allotment provision and a new cemetery are also included in the plans. Grainger Trust PLC, which, along with George Wimpey, owns this land and is responsible for the development. Winchester and Havant Councils have oversight of this area.



As a parish, we have piloted work within this community, which, when completed, will have over 3000 homes, and this includes housing for serving personnel. We have made positive connections with the Parish Council and Community Board. Our curate has held services to commemorate Easter, Christmas, Remembrance, including VE and VJ Day. In collaboration with the community, we have also supported their craft sessions, repair and carers café, quiz evenings and fetes. More recently, we have been working alongside Newlands Primary Academy, providing regular assemblies and supporting staff. Members of the community have supported our church events and helped to run various sessions and activities. This April, we have been invited to speak at the Parish Council AGM about the work we have done over the last few years and what we hope we can do in the future. We now have a growing presence on which the pioneer minister, when appointed, can build upon.

PATRONAGE

Both Christ Church and St John's are under the joint patronage of the Bishop of Portsmouth and the Simeon's Trustees.



OUR VISION FOR THE FUTURE



MISSION ACTION PLAN (MAP)

We have created a mature draft Mission Action Plan for our parish of Portsdown and Purbrook. The draft will be available to our new Incumbent and includes our 4 focus areas below:

1. Our Children, Youth and Families' Ministry

Offering a vibrant fellowship for all-ages, developing intergenerational relationships within the Parish to draw people of different ages together for worship and discipleship, foster understanding and create a strong and cohesive community.

2. Showing the love of God locally

Extend the love of Christ into our local community, including schools and Berewood.

3. Pastoral Support and 'Bearing Each Other's Burdens'

Provide compassionate and Christ-centred care to parishioners and other community members, especially in times of need, transition, or crisis (e.g. through our Anna Chaplaincy team).

4. Providing engaging worship and discipleship opportunities

Support our congregation's engagement in worship and discipleship by providing a range of opportunities throughout the month that reflect the needs and profile of our parishioners and the traditions and future vision of our two churches.

This will value tradition while catering for the mix of people that make up our congregations.



PARISH FUNDING

The restricted, general, and allocated parish funds are managed by the Parish Treasurer. The most recent financial statement is up to date as at date of publication of this Parish Profile.

Although we currently have a caretaker Parish Treasurer in post, the recruitment of a Parish Treasurer is currently ongoing.

SAFEGUARDING

Within our parish we take seriously the responsibilities to protect and safeguard the welfare of children and vulnerable adults who may be at risk of harm.

In accordance with the Church of England Safeguarding Policy our churches are committed to:

- Promoting a safer environment and culture and are passionate about providing welcoming, safe and caring church spaces for all.
- Safely recruiting and supporting all those with any responsibility related to children, young people and vulnerable adults within the church.
 - » This involves ensuring they are aware of safeguarding church policy and procedures. Our lead recruiter carries out all DBS checks and validation of paperwork.
 - » Our PSO ensures all training is completed in accordance with the diocesan guidelines relating to the role of the individual.

- Responding promptly to every safeguarding concern or allegation.
- Caring pastorally for victims/survivors of abuse and other affected persons.
- Caring pastorally for those who are the subject of concerns or allegations of abuse and other affected persons.
- Responding to those that may pose a present risk to others.

As part of the above the Parish Safeguarding Officer (PSO) works with our Incumbent, meeting at regular intervals and then feeding back to the PCC to implement policy and procedures.

The PSO feeds back to the PCC via our recently appointed PCC Safeguarding link person. Additionally, the PSO provides updated reports to the PCC biannually and at the APCM annually. The PSO also monitors:

- diocese PCC safeguarding training compliance.
- enhanced DBS clearances for those requiring this level; and
- DBS clearances.

The PSO liaises directly with our diocesan safeguarding advisor and has access to the Safeguarding network meetings as well as the conferences arranged through the dioceses annually to maintain best practice.



ATTENDANCE

Attendance has been static for several years, but our PCC is seeking numerical, as well as spiritual, growth. The service pattern may need to be reviewed to enable this, and the PCC is open to considering this in discussion with our new Incumbent.



PAROCHIAL PARISH COUNCIL (PCC)

The parish has one PCC that meets monthly, with a Standing Committee meeting in between times. We have good representation at the deanery and diocesan synods and diocesan-level committees. Since 2023, under the guidance of our Treasurer, we have combined the finances of the two churches and streamlined our financial processes. The restricted, general, and allocated Parish funds are managed by a caretaker Parish Treasurer (a recruitment plan is in process). The most recent financial statement is up to date as at date of publication. All of our policies and practices are shared across the parish.

The parish has a part-time Administrator located in the vestry office at St John's. Once a month, a vestry hour is offered so that members of the community can enquire about weddings, baptisms and other services.





MISSION SUPPORT

We believe that we are a generous community, and giving is important to us. Mission Support by the parish is centred on supporting specific local, national and overseas agencies which have a Biblical Christian basis.

Missions currently supported include:

Portsmouth School Pastors	Mission to Seafarers
Church Mission Society	Church Army
Compassion	TeachBeyond
MAF	Simeon's Trustees
Christian Aid	Tearfund
Alabare	Bible Society

Our target is that total donations to mission given from and through the PCC should be 10% of our income.

Previous pilgrimages from our churches have undertaken mission support works and donations to the parish of Koforidua in Ghana and to the Holy Land, Israel. There is also appetite for a further pilgrimage to the Holy Land in the near future.

THE GRANGE APPROVED PREMISES

Local to St John's is The Grange, a Probation Approved Premises which is home to twenty male residents and managed by a Senior Probation Officer, assisted by six staff.

CHRIST CHURCH, PORTSDOWN



The style of worship at Christ Church is probably best described as open evangelical. Worship is relaxed while remaining liturgical. Music is led by a worship band.



Whilst more than 50% of the regular congregation are of retirement age, we continue to attract a small number of young families.

The usual Sunday attendance in 2025 was 59 adults and 6 children.

Christ Church is an evangelical church which seeks to:

- become more like Christ Jesus;
- share Christ's love with the community around us; and
- help all discover Jesus for themselves.

The Christ Church building is situated 150 metres north of the top of Portsdown Hill in PO6 3NB, providing a scenic viewpoint to the north of Portsmouth and within the parish of Portsdown and Purbrook.



The southern part of the parish lies within the City of Portsmouth, while the northern part is mostly in the Borough of Havant, although there is also an area of farmland which is in the District of Winchester. Christ Church is within the Deanery of Havant, in the Archdeaconry of Portsdown in the Diocese of Portsmouth.

Christ Church has a long evangelical history and as noted above, is generally considered to be 'Open Evangelical', and mainly unrobed ministry except at Christmas and Easter.

On June 4th 1944, the Headquarters staff of the Second Army (which was to represent British Arms in the liberation of Europe) met at Christ Church on the eve of battle "to dedicate to Almighty God the task which lay before them".

The service was organised by the vicar, the Reverend RBS Gillman, and General Sir Miles Dempsey, Commander of the British Second Army. On June 6th 1948, they returned to give thanks to God and to rededicate themselves to His service. To mark God's help, two commemorate stained glass windows were presented to the church.

Every year, on the Sunday nearest to June 6th, a special D-Day Parade Service is held that remembers the original 1944 service and is usually well supported by the local community including currently serving service persons and veterans.

WORSHIP AT CHRIST CHURCH

The current pattern of services is as follows:

THE 8AM SERVICE:

Holy Communion (alternating Common Worship 1 & 2) with a sermon. Average attendance: 15

This service is held at Christ Church during the 6 months of late autumn, winter and early spring, then at St John's from late spring, all summer and early autumn.

THE 11AM SERVICE:

Holy Communion (Common Worship 1) twice/month, otherwise Morning Worship. Average attendance: 59 adults, 6 children.

Musical worship at Christ Church is usually led by a worship band consisting of keyboards, guitars, drums and vocals. At special services such as D-Day Memorial, Remembrance and Christmas Carols, hymns are accompanied by the church organ.

Sunday readings usually follow the Common Worship lectionary, although sometimes an alternative preaching programme is followed.

Although, like many congregations, we have a significant number of more senior people, we have recently seen a growth in young persons in our congregation.

The children's area, adjacent to the main seating area of the church, ensures that children are included within the service, allowing for craft, colouring and story reading with a biblical message to a predominantly primary school age group.

CAMPANOLOGY

Christ Church has a single, swung bell. This bell is in service and used occasionally.

OCCASIONAL OFFICES

In 2025 there were 4 baptisms, 1 confirmation and 1 wedding. There were 19 funerals, 5 of which were in church.

CHURCH-BASED GROUPS

There are several home groups which meet fortnightly for Bible study, prayer, and fellowship.

The Mothers' Union meets monthly on a Tuesday afternoon in the hall.

The Women's Breakfast occasionally meets in the Christ Church hall as a joint venture with other local churches. Breakfast is followed by worship and a guest speaker.

The Men's Breakfast meets on the first Saturday of the month at Christ Church hall, St John's Church hall or at other local churches. Breakfast is accompanied by fellowship, prayer and sometimes a guest speaker.



We have a popular Dads' Club (currently under the banner of "Who Let the Dads Out?") that meets once a month for fathers and children to play together and also arranges social events. The Dads' Club is currently considering how to update its format for the future.

CHURCH EVENTS

We would like our new Incumbent to support a team in reinvigorating the previously-held annual Summer Festival and Advent Fayre, which have recently lapsed. They changed in recent years from being primarily fundraising activities to being community events which enhanced the reputation of the churches within our parish.

ASSOCIATED GROUPS

We have a link with the local Scout and Guide community. The 72nd Portsmouth Scout Group meets in a hall on the church grounds, and the various groups attend Parade Services along with other special services within Christ Church. Many of our worshippers would like to increase their involvement within the church and its activities.

We have strong links with our local military community, including veterans, with the church periodically hosting Veterans' breakfasts. This is an area with clear potential for further growth..



THE CHRIST CHURCH BUILDING

The church was built in 1871, consecrated in 1874 and together

with the churchyard stands on a site of approximately three acres. In addition, there is a military cemetery of approximately one acre at the east end of the churchyard, which is managed by the Commonwealth War Graves Commission and the Ministry of Defence.

The church has a maximum seating capacity of about 200 people in traditional pews. Additional seating can be provided in the side aisles (from where pews have been removed) for larger services. The whole building is in generally sound condition but needs updating. A programme to do this has begun.

There is an interesting and documented history of this church building which has also been presented to the local community by a local historian. The church construction, its military and civil history is directly connected with that of St John's within this parish.

THE CHRIST CHURCH HALL

The church hall is a separate brick building adjacent to the north of the church and stands on a further one-acre site. The hall was constructed in 1931 and comprises of a large main hall with two smaller rooms adjacent, a refurbished kitchen and toilet facilities. It is well used by the community.

A substantial and modern brick-built Scout and Guide hut is situated to the east of the church hall, and a small ground rent is paid to the church. The land around the church hall is used for car parking.





THE MILITARY CEMETERY

To the rear of our Christ Church is a military cemetery maintained by the Commonwealth War Graves Commission. There are also a few military graves in our main churchyard.

Each year we hold a Remembrance Service to remember those who have fallen. Part of the service is conducted in the military cemetery.

WHO LET THE DADS OUT?

Meets monthly on a Saturday morning in the church hall for Dads (or male carers) with their pre-school children. As noted above, as the children have aged and the members are keen to continue meeting, this group is currently considering how to restructure itself for the future.

SCOUTING

Scouts and Guides (Beavers, Cubs, Scouts, and Explorer Scouts, Rainbows, Brownies, Guides and Senior Section) meet in their own hall in the grounds of the church hall. The links with the church are strong and Parade Services are held 4 times/year.



ST JOHN THE BAPTIST, PURBROOK



St John's Church is open each day from 10am to 5pm and receives a surprising number of visitors: Some seeking God, some a space for prayer, some seeking solace, others just a space and time for reflection.



St John's is a friendly church of a central tradition though not formal. Hymns are sung to pre-recorded (usually organ) music. The church organ is only played at festival services and some other occasional offices.

Usual Sunday attendance in 2025 was 36 adults, 3 children.

The parish is part of the Deanery of Havant, within the Archdeaconry of Portsdown in the Diocese of Portsmouth.



WORSHIP AT ST JOHN'S

THE 8AM SERVICE:

Holy Communion (alternating Common Worship 1 & 2) with a sermon. Average attendance: 7.

This service is held at St John's during the 6 months of late spring, all summer and early autumn. It is then held at Christ Church from late autumn, through winter, and into early spring.

SUNDAY, 9:30AM

Holy Communion (CW1). Average attendance: 36 adults, 3 children.

The style of worship is based on the formal traditions of the Church of England with the expectation of robed clergy.

BREAKFAST CHURCH

Takes place in the church hall four Sundays each year, a popular relaxed service that takes on the theme of the Sunday and normally has a high degree of 'audience participation'. Average attendance 44.

5:30PM SERVICE

A relaxed Taizé service is held each second Sunday. Average attendance 11.

CHILDREN, YOUNG PEOPLE AND FAMILIES

Guides (Rainbows, Brownies, Guides) meet in the church hall and have good links with the church.

The church is immediately neighboured by two pre-schools, one of which meets in the church hall.

OCCASIONAL OFFICES

In 2025 there were 8 baptisms, 4 confirmations and 3 weddings. There were 9 funerals, 4 of which were in church.

LOCAL MISSION AND COMMUNITY ACTIVITIES

Extended Communion is taken by our parish Curate into two care homes in the parish.

The Rowans Hospice, sited just within the neighbouring parish of Southwick but close to St John's, attracts much support from church members at St John's and Christ Church.

St John's also hosts a Saturday Café in the church hall from 10am to 11:30am on the second and fourth Saturday of each month. A very popular social event for Churchgoers and visitors alike with barista quality coffee and an excellent choice of cakes. Normal attendance around 38 but up to 60.



THE CHURCH BUILDING

The church building is in Purbrook village (PO7 5RS), one mile to the north of Christ Church. The parish lies within the Borough of Havant.

The church was consecrated in 1858 and together with the churchyard stands on a site of approximately 2 acres.

Construction of the church began in 1843 but conflict between the local squire and the Rector delayed consecration until 1858. The flint exterior is in the



decorated style with many Victorian stained-glass windows and is largely original. The vestry has recently been refurbished to provide office accommodation for our parish administrator. The nave is fitted with light-oak pews for approximately 170 people. The single bell was replaced by a peal to celebrate the millennium.

The condition of the building is generally good, but some necessary repairs were identified in the 2024 Quinquennial report. The external and internal walls, ceilings, plaster and paintwork are in good order, but the floor shows signs of its age in uncarpeted areas. Internal fixtures, fittings and electrical wiring are in reasonable condition. Electrical inspection and testing is up to date.

Designed by J.P. Harrison, a follower of Pugin and architect of Keble's Church at Hursley, near Winchester, many of the features of St John's may be found more ornately in All Saints Church, Hursley. The conventional layout of the building, with the altar at the east end, is not conducive to many forms of service or worship-related activity but plans for re-ordering are currently on hold.

CHURCH CAR PARK

A cul-de-sac separates the Church from the adjacent vicarage and includes the car park for the congregation and visitors to the church and the church hall. Parking is provided for 18 vehicles including 2 spaces for the disabled.

FAMILY SPACE

A very well-used, carpeted family space has been established towards the centre of the church with facilities for babies and younger children and their parents.

There are no other expressions of mainstream church denominations in the parish.

THE ST JOHN'S CHURCH HALL

The church hall is a separate building adjacent to the north of the church and was constructed as a Methodist Chapel in 1932. It

comprises a large main hall with smaller rooms adjacent, with a refurbished kitchen and toilet facility. It is in good condition and well used by the community.

MEMORIAL GARDEN

St John's churchyard features a memorial garden and bench for the bereaved to place memorial flowers or to sit and rest.

CAMPANOLOGY

St John's has a peal of 6 full circle rung bells commissioned in late 1999 as part of the Millenium celebration.

Practice is on Wednesday evenings. They are not currently rung on Sundays, for weddings or funerals, but this is under discussion.





PARISH MINISTRY TEAM

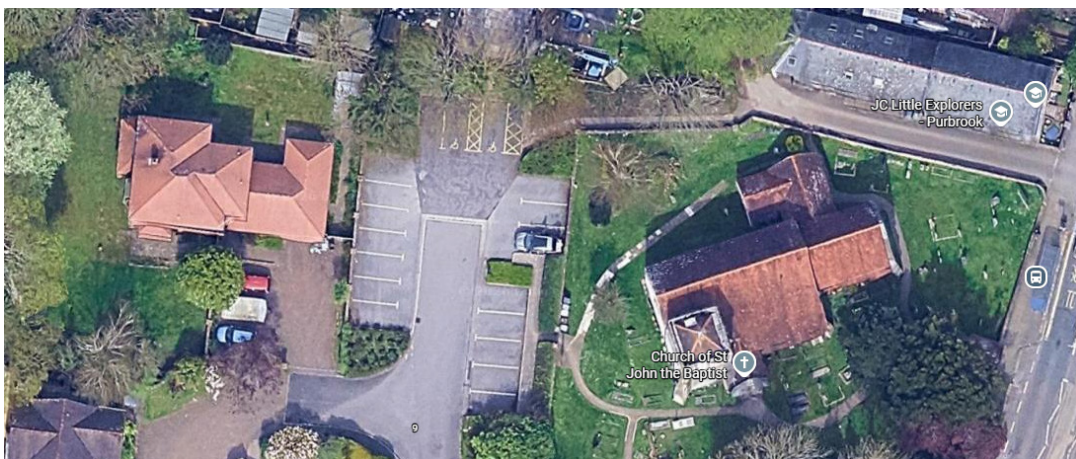
Vicar	<i>Vacancy</i>
PtO	Rev Sandy Phillips
PtO	Rev Tyrone Hillary
Curate & Anna Chaplain (SSM, Part Time)	Rev Dr Coleen Jackson
Ordinand	Mrs Tracey Harvey
Parish Church Warden	Mr Adam Harvey
Parish Church Warden	Mr Stephen Anderson
Deputy Church Warden	Mrs Karina Golledge
Deputy Church Warden	Mr William Jeffery
Parish Treasurer (Caretaker)	Mrs Lesley Shayler
Safeguarding Officer	Mrs Ismay Doughty
PCC	Full PCC in post
Associate Minister (0.5 stipend)	<i>Vacancy</i>

LOCATION



CHRIST CHURCH AND CHRIST CHURCH HALL

Showing the church (lower, left), the church hall (upper, left) and the Scout/ Guide hut (upper, centre/right).



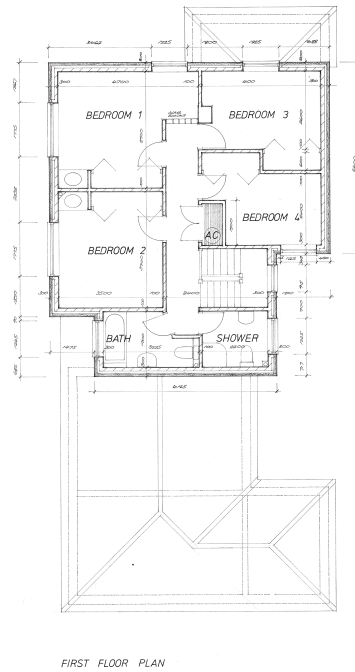
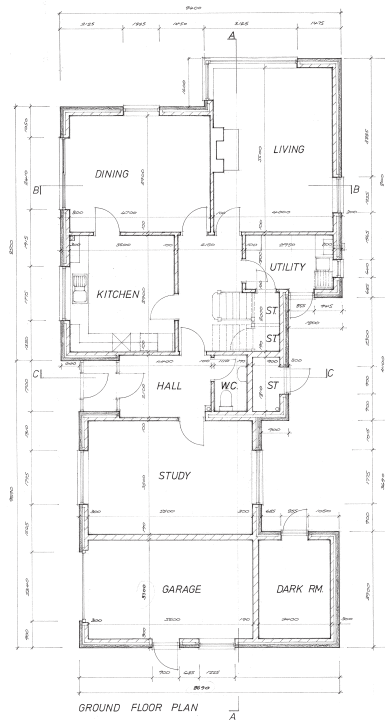
ST JOHN'S AND ST JOHN'S CHURCH HALL

Showing the church (centre, right), the church hall (top, right) and the vicarage (upper, left).

HOUSING



There is a four-bedroom detached vicarage owned by the diocese, situated in the parish of Purbrook, adjacent to St John's.





There is a three-bedroom semi-detached curate's house, owned by the diocese, situated in the parish of Purbrook.

There is a three-bedroom detached vicarage, owned by the diocese, situated in Berewood. This is a new building, previously unused by the Parish.

LOCAL SCHOOLS

Locally there are three core schools located in Purbrook itself: Purbrook Infant School, Purbrook Junior School, and Purbrook Park School.

Nearby are the Crookhorn College and Berewood Primary school in addition to the St Peter's Catholic Primary School and Oaklands Catholic School and Sixth Form College.

Many of these are ranked good or outstanding by OFSTED. The Churches have good relationships with several of them, including the two Catholic schools.



CONCLUSION

This is an exciting time as the two Churches use their different worship styles to minister together for the future.

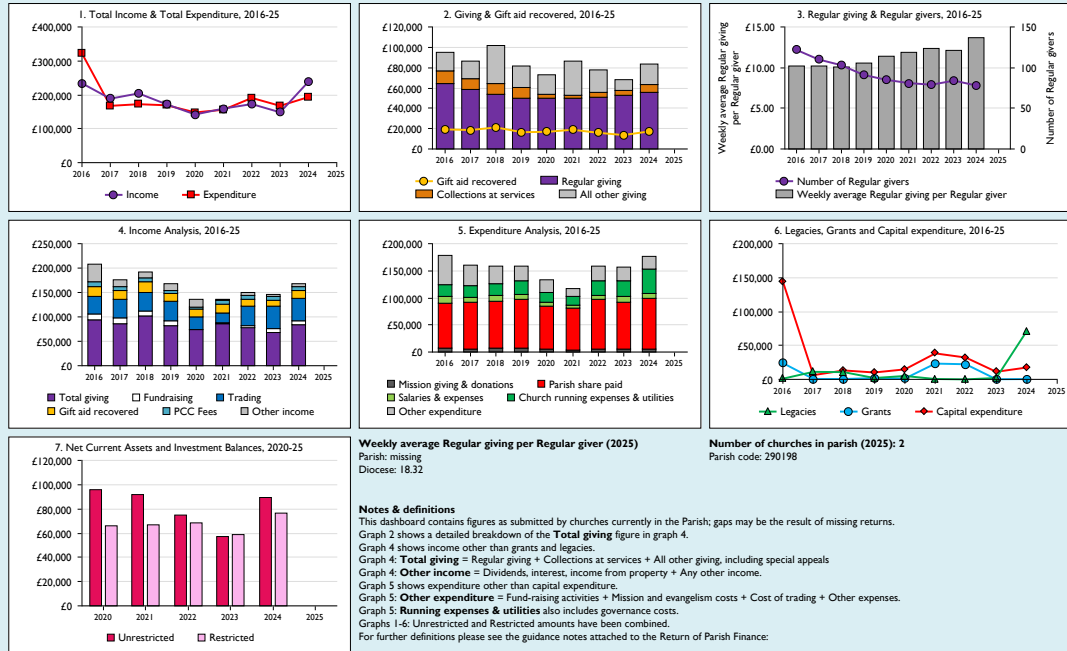
Christ Church offers a wide variety of worship and church life which is further enhanced by the relationship with St John's Church, which offers comfortable, traditional worship and church life.

Across both churches, as with many congregations, there is a significant number of more senior people, alongside a growing presence of young people, younger adults and families. While our children's work has faced challenges, there is a shared commitment to rebuilding this ministry. There are also opportunities to develop our links with Scouts and Guides, local schools and toddler groups.

Together we continue to share the love of God across the parish and look to develop ministry into areas of new housing. The mix of worship styles, coupled with the opportunity to be part of further expressions of Church will provide an excellent opportunity and mission, and to the glory of God.

APPENDIX

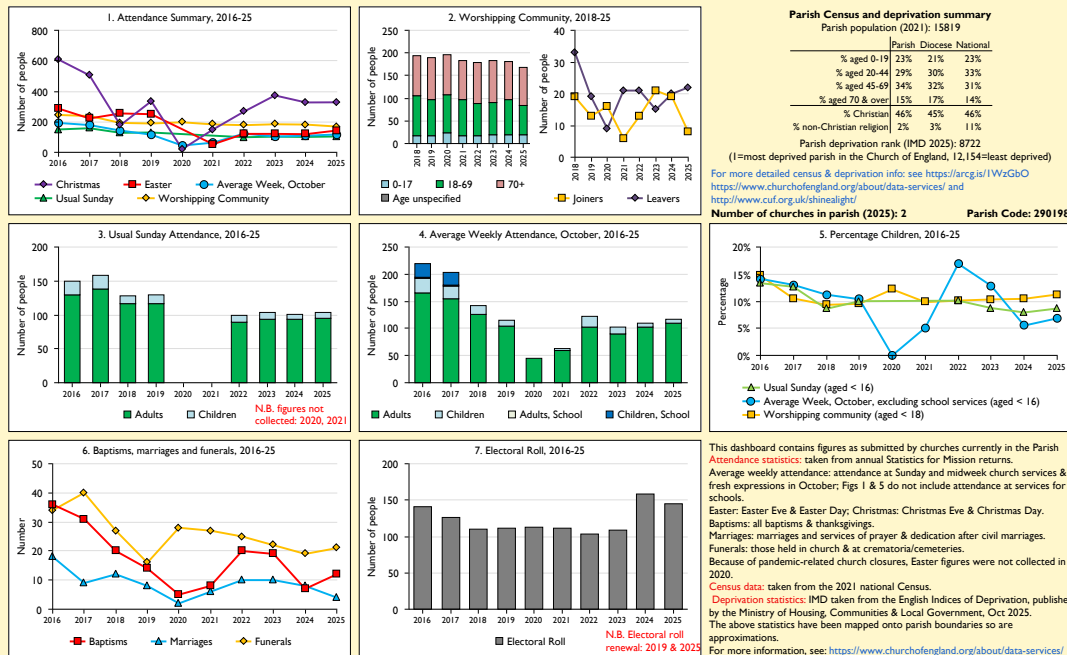
Finance Dashboard for the Parish of Portsdown And Purbrook in the Deanery of HAVANT



Variations from year to year may be the result of changes in the number of churches that submitted returns, or changes in parish/benefice structure.
Number of churches included in returns: 2016 2:2017 2:2018 2:2019 2:2020 2:2021 2:2022 2:2023 2:2024 2:
Produced by Data Services, Church House, Great Smith Street, London SW1P 3AZ. Date of production: 22/04/2026.
Every effort has been made to ensure that data are reliable. We would be pleased to be notified of any significant errors or omissions by email to statistics.unit@churchofengland.org



SIM Dashboard for the Parish of Portsdown And Purbrook in the Deanery of HAVANT



Variations in attendance from year to year may be the result of changes in the number of churches that submitted returns, or changes in parish/benefice structure.
Number of churches included in returns: 2016 2:2017 2:2018 2:2019 2:2020 2:2021 2:2022 2:2023 2:2024 2:2025 2:
Produced by Data Services, Church House, Great Smith Street, London SW1P 3AZ. Date of production: 22/04/2026.
Every effort has been made to ensure that data are reliable. We would be pleased to be notified of any significant errors or omissions by email to statistics.unit@churchofengland.org





DIOCESE VISION AND STRATEGY

Our vision in our diocese is to be a Church with Jesus Christ at the heart of everything we do, a Church in which we seek God's Kingdom, and where all are enabled to experience a life-transforming encounter with Jesus Christ in order to become disciples.

We have now crystallised that thinking into a phrase that we hope sums up what we aspire to be: a rejuvenating community (one that rejuvenates itself and seeks to rejuvenate others) of Jesus-centred (learners and followers of Jesus, with our actions shaped by him), Kingdom-seeking (including our devotion to God, our passion for social justice, our care for creation and fellowship with each other) disciples (we are committed to our faith, and want to keep on becoming more like Jesus).

That vision is supplemented by two further priorities:

- We deliberately prioritise our work with children, young people and young adults, to enable a new generation to grow in faith and find their voice. They are the Church of today.
- We value and treasure our older people, and ensure they are being cared for holistically, by the provision of Anna Chaplaincy to support them in every parish, benefice and cluster across the diocese.

As a diocesan community, we are invited to take part in the strategy that we pray will guide us towards the vision described above, as we are led by the Holy Spirit. This strategy aims to tackle some of the challenges we know that we face as a diocese: declining attendances, older congregations, expensive buildings, over-stretched staff, and a gap between the costs of our ministry and our income.

So our REJUVENATING strategy aims to place children and young people at the heart of our planning, and also seeks to REVIVE, REVITALISE and RENEW our network of parishes, chaplaincies and church schools. Creating thriving churches with an emphasis on children and young people is a watermark that runs through these parts of our strategy:

- **REVIVE:** a call to spiritual renewal for all our clergy and lay leadership to experience a continued personal refreshing of the wonder of God's presence in our lives.
- **REVITALISE:** to grow our existing churches, connecting ministries together to form a pathway that reaches people who are unconnected with church, and supports them as they journey to become committed disciples who own for themselves Jesus' mission.
- **RENEW:** in communities where there is no effective church presence, we believe it is right to plant/transplant new congregations and build New Worshipping Communities to focus on outreach and younger generations.

Our STRATEGY is summarised in this diagram:





INTRODUCTION TO THE DIOCESE OF PORTSMOUTH

The Diocese of Portsmouth stretches across south-east Hampshire and includes the whole of the Isle of Wight. It includes 133 parishes, from Botley in the west to Emsworth in the east, and from Blackmoor in the north to Ventnor on the south side of the Isle of Wight. It includes diverse communities, ranging from the densely populated and relatively deprived parts of inner-city Portsmouth, to rural villages in Hampshire; and from a range of seaside towns on the Isle of Wight to suburban communities west of Fareham and Gosport. In total, it covers 420 square miles and has a population of 784,000.

The Diocese of Portsmouth has 170 churches, ranging from historic listed buildings to brand new, purpose-built churches. There are around 150 clergy serving in those churches and their parishes, around 50 of whom are self-supporting. There are also around 70 licensed lay ministers who help with leading services and pastoral work. Around 13,500 people regularly worship in our churches, on Sundays and during the week. Attendance numbers have been declining over the past 10 years, but there are particular congregations that have grown. Only a tiny number of churches have been closed in recent years.

Parishes and chaplaincies within the diocese are supported by a small diocesan team, based in Peninsular House, Portsmouth. These officers support parishes and church schools, administer clergy housing and stipends, manage its property portfolio, promote social justice, handle communications, manage safeguarding procedures, and run a variety of training courses. The Diocesan Secretary oversees these staff. Separate teams of staff are employed in the bishop's office and for the three archdeacons. There is no suffragan bishop.

The diocese includes 44 Church of England schools in south-east Hampshire and the Isle of Wight. These are still mostly schools funded by the local authority, but the diocese supports them with regard to governance and admissions, building projects, Christian ethos, RE and recruitment of headteachers. The education team supports schools across both Portsmouth and Winchester dioceses, under the authority of a Joint Board of Education. Two schools on the Isle of Wight are joint Church of England/Roman Catholic schools.

Bishop Jonathan Frost was installed in March 2022, and has shared his vision for the diocese – a place where all are invited into a life-enhancing encounter with Jesus Christ. It should be a place where children, young people and young adults are given a particular priority; and where ministry to the elderly is supported by a network of Anna Chaplains, working in every locality. The vision is encapsulated by a vocational call to all Christians which has been supported by strategic funding from the national Church of England to promote the planting of new congregations and a network of pioneer ministers. You can read more about our vision and vocation at portsmouth.anglican.org/our-strategy.



The Diocese of Portsmouth is one of the smallest dioceses in the Church of England, but has often “punched above its weight”, with senior staff and diocesan officers involved in the national Church, managing joint projects or implementing innovative ideas. Financially, the payment of parish share has always been good – but the recent Covid pandemic has resulted in some financial challenges.

There is a range of churchmanship across all traditions within the diocese, few parishes deliberately exclude themselves from deanery and diocesan initiatives, and our smaller, family feel means that most clergy and lay leaders know and respect each other.

a Rejuvenating community of Jesus-centred, Kingdom-seeking disciples



Diocese
of Portsmouth

1st Floor, Peninsular House
Wharf Road
Portsmouth
PO2 8HB
023 9289 9650
portsmouth.anglican.org

@CofEPortsmouth



THE CHURCH
OF ENGLAND