

Cowplain

PARISH PROFILE



THE CHURCH
OF ENGLAND



Diocese
of Portsmouth

CONTENTS

Bishop's Welcome	3
Welcome	4
Our New Priest	6
Prayer	11
Services	12
St Wilfrid's Children and Families	14
The Church Buildings and Grounds	15
Local Geography	17
Fellowship, Outreach and Mission	19
Ready to go!	24
Conclusion	26
Introduction to The Diocese of Portsmouth	29

BISHOP'S WELCOME

The Diocese of Portsmouth is in good heart and together we have heard God's call to Live, Pray and Serve the Kingdom of Christ, in and for the world.

If you sense the good Lord is calling you to join in with this beautiful work of retrieval and love we will be ready to receive you – all that you bring – in the days ahead.

With my prayers and blessing,

Jonathan Portsmouth




THE RT REV JONATHAN FROST,
BISHOP OF PORTSMOUTH

WELCOME

Watch our Parish Video [here](#).



St Wilfrid's Cowplain will be celebrating its centenary in October 2023. It is our prayer that a new parish priest will be joining the celebrations for this joyful occasion, leading us forward to live closely with God and to share the wonderful news of salvation, as we begin the next 100 years.

 Our vision, reflected in this logo, is to put the love of Christ at the heart of the community.

This is evident in our warm and sincere welcome to everyone who visits us, and in our community outreach. Our links with schools and with the many people of the parish continue to extend blessings, within and beyond our church doors.

In our church we celebrate diversity in worship – traditional and modern, quiet and exuberant, live and on-line – people of all ages. Nurturing the spiritual growth of church members and spreading the Good News in the community are opportunities not to be missed.

We are seeking a parish priest who will discern God's plans and bring them to fruition with us; we believe that the right person will know that God is calling them to this place. We have seen God create fresh expressions in St Wilfrid's in the past and we are eager to see where He takes us next.

We face challenges as many do in a time of changing patterns nationwide, but we know that God will continue to do incredible things with us and through us. We anticipate that God will present us with new challenges and opportunities: will you be the person to guide us through them?



OUR NEW PRIEST

CONTEXT OF THE ROLE

St Wilfrid's is a church with a heart for Jesus, the Holy Spirit and prayer. It is a church embracing traditional and evangelical styles of worship.

As our new parish priest, you will inspire our congregation to continue to spread God's message throughout our community, discerning His vision for us as we go forward.



You will be the leader in a ministry team of six. In addition, there are Churchwardens, PCC members and Team Leaders. We employ a part-time administrator and have a dedicated safeguarding officer. All are very much looking forward to working with a new Parish Priest.

We care about each other so we will recognise, and support, your need for a healthy work/life balance. We will encourage you to allocate time for your own personal spiritual refreshment as you face the demands of working within a busy church and parish.

"We are a church of both liturgical and evangelical/charismatic traditions, practices, and preferences within our congregations. We seek to offer, grow and respect the best of

these, in ways which will enable our members and our local community the opportunity to meet with and journey with Jesus in ways most meaningful for them."

Denise – Deanery Synod Rep

And our hope: someone who has aptitude and ability to bring us all closer to God.

- You will be a creative and imaginative spiritual leader, pointing others to Christ;
- You will have ability to exercise pastoral care in a sensitive and practical way;
- You will have depth and knowledge to lead a diverse congregation;
- We pray for an excellent communicator, able to preach challenging sermons, encouraging us to live the Scriptures;
- You will be personally engaging and confident with all generations in a range of social settings;
- You will regard listening and responding to feedback as essential components of leadership;
- You will demonstrate organisational, leadership and management skills – confident in knowing when to delegate to others.

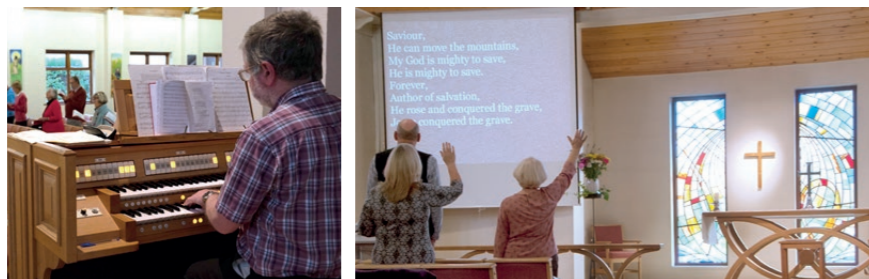


As our new parish priest, you will be someone who will:

- nurture the spiritual growth of church members of all ages - and stages, leading us to deeper discipleship and Christian service;
- demonstrate the mercy and love of Christ through your care of others;

- inspire and revitalise the diverse church family at St Wilfrid's and draw us together in vision and purpose;
- further develop our pattern of worship so that we can better serve the needs of the congregation and the parish;
- ensure a fully inclusive church for all people;
- grow our work with children, young people and families so that they have a greater presence within our church;
- continue to build up and strengthen relationships with local schools, churches and organisations;
- encourage and expand our spiritual vision for mission and outreach;
- inspire, motivate and empower others so that they may respond in Christian love to challenging situations;
- fully participate in and contribute to the life of the deanery (including synod and chapter) and the Diocese.

"We would like and need a new church leader to lead us with fresh ideas and direction in 2023. Hurry up new person we need you here with us, to guide us to an exciting future in God's love". Amen.



And our prayer for the new parish priest:

Dear Heavenly Father, we give thanks for all the clergy who have served you, and the people of this parish, over the past 99 years.

We pray that our new incumbent will respond with eager

enthusiasm to God's call to come to St Wilfrid's at this time in its history. We trust that they will be a person of firm faith, who will inspire members of the church family - as well as those who live in our community - with their love, encouragement and wisdom.

We pray that our church will grow in depth, impact and number under the leadership of the new incumbent and that our support for that person will enable them to do all that God is intending, in this Parish of St Wilfrid, Cowplain.

May God's light shine as a beacon in this place. For ever and ever. Amen.

KEY PEOPLE WITHIN OUR CHURCH

"We have a strong and willing team supporting our beautiful church here in Cowplain".

- Two churchwardens and one deputy churchwarden;
- Two Curates:
 - one who is on maternity leave until November and licensed to be with us until June 2024,
 - one who is a part time, self-supporting minister;
- A Lay Minister who also serves as an Anna Chaplain;
- Two retired clergy who take an active role in leading services and pastoral care;
- PCC (all of whom are DBS checked and trained to Diocesan requirements);
- A part time, salaried Parish Administrator;
- A treasurer;
- A safeguarding officer who works closely with the Diocese;
- A GDPR officer;
- A small team who provide audio/visual displays for the Sundays@11 services, and other special services;
- A music group that leads sung worship at Sundays@11;



- Although we are blessed by contributions to our services by our retired organist, we are intending to recruit a paid organist. Funds are also available for employing a new vergger;
- Our environmental committee, working to assess and implement ways of moving forward ecologically;
- A maintenance team, ensuring that our buildings are kept in excellent order;
- A gardening team, caring for our grounds.

“St Wilfrid’s has a church building that is loved.”

“I am a part-time assistant curate and was licensed at St. Wilfrid’s in March last year. Both my wife, Shirley, and I were made to feel very welcome and we enjoy being part of the St. Wilfrid’s church family. Having an affirming congregation and supportive ministry colleagues, makes for an ideal learning environment.”

Rev Derek Johnston



PRAYER

We endeavour to be creative in providing a range of different opportunities and experiences for prayer.

During December, Church members, hall users and visitors are invited to hang a bauble and a prayer on our Christmas tree.

We offer prayer ministry at all our services; every month we have a prayer diary and a dedicated Day of Prayer; people are invited to share prayer needs via email and by written requests; each year, we join in with Thy Kingdom Come initiatives.

We have close links with our **Diocesan Spirituality Team**.



SERVICES

St Wilfrid's has four distinct services, allowing people to relate to God in different ways. The artwork depicted here was created by members of our church to reflect our diversity and interdependence. Although our four services are very different, we are united in our love of God in Christ.



"I have loved that my family have enjoyed being a part of the St Wilfrid's family and church community for the past 6 years, and my children have enjoyed learning about Jesus and growing in faith through all that St Wilfrid's do."

Lisa – mother of two, and one of the leaders of Sunday Club

"Some have described St Wilfrid's as a 'middle of the road' church; we'd disagree. There is nothing 'middle of the road' about our 3 different weekly services, what these services do is meet the specific needs of each congregation without compromising the gospel message of life, love and salvation."

Elaine – Lay Minister and Anna Chaplain

Week	One	Two	Three	Four	FIVE
Sunday 9am Service	Formal	Formal	Formal	Formal	All together service at 10am
Sundays@11	All Age with Baptism	All Age with Sunday Club	All Age with Communion	All Age with Sunday Club	
Thursday am	Formal	Formal	Formal	Formal	
Messy Church		Thursday pm			

Our 9am Sunday service is a formal, reflective service of Holy Communion and traditional hymns.

The Sundays@11 service is relatively informal, a relaxed

service, led by clergy and lay people, and our music group. At this service, we offer Sunday Club (for primary aged children) twice a month, and Holy Communion once a month. Baptisms also take place during this service. In preparation for the **Sundays@11** services, much thought and consideration are given to ways of engaging and involving children and families.

On the months when there is a fifth Sunday, the congregations often join together for an all-together service.

Our Thursday morning spoken service of Holy Communion is a quiet, contemplative service; this service is increasingly popular.

Available at all services, we have a crèche at the back of church with engaging toys and activities. Refreshments are offered after each service.

"In our lovely church we have many families who come regularly, and even more who come occasionally, with children of all ages, from tiny babies to teenagers. The church offers a wide variety of activities and events for families and children: it is a welcoming place to bring children."

Lisa – mother of two

Messy Church provides worship through creative activities, an interactive talk and a good meal. People who come to Messy Church may or may not also attend on Sundays. We have seen a revival in Messy Church post Covid, with new families attending.

We meet on Thursday afternoons, once a month.

"I recently started helping with Messy Church and was encouraged to find how many families came with their children and joined in happily with all the activities".

Our service pattern has changed over the years; there are those who yearn to return to former patterns and others who would welcome further change. We responded quickly to the challenges that lockdown brought about and introduced popular online services that were well attended. Since lockdown we have continued meeting by Zoom for Morning Prayer and other prayer events.

ST WILFRID'S CHILDREN AND FAMILIES

Another and new baby group set up during lockdown served to bless a number of families who have subsequently joined our twice weekly Toddler Groups. We also work to grow the faith and discipleship of our children and young people through running courses such as 'Parenting for Faith' which many church families recently took part in.

Illumin8 is the youth group for School Years 6 to 11, which is shared across the local parishes of Blendworth, Catherington, Clanfield and Cowplain and started in September 2021. The group meets monthly at Catherington Vicarage to share food, fun and friendship – all with a clear Christian foundation.



"The sharing of deep life experience amongst our youth, in a Christian context, is exciting and challenging in equal measure!"

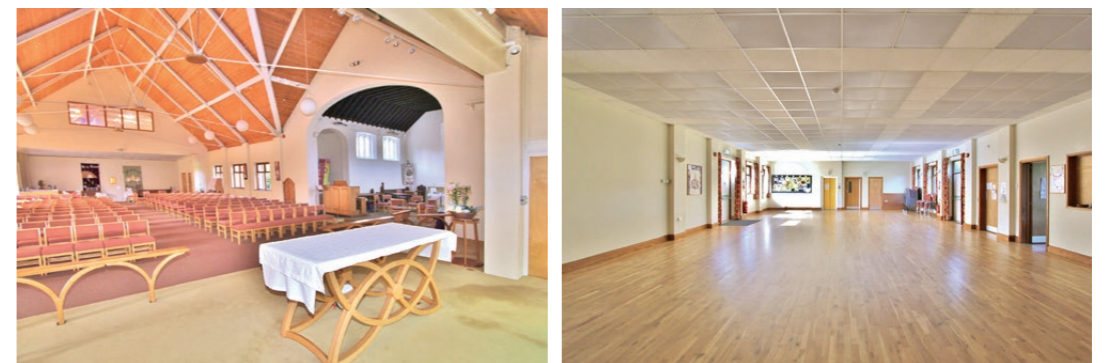
Rev Richard Hutchins, leader of Illumin8

We have been pleased to welcome local youth organisations including Scouting and Guiding groups to special services at our church including Remembrance Sunday and Christingle.



THE CHURCH BUILDINGS AND GROUNDS

The Mission Church of St Wilfrid was built in 1923. In the 1930s a hall was added behind the church and in 1952 the Vicarage was built behind the hall. St Wilfrid's became a parish in 1962.



To enable the church to cater for the needs of an enlarged population, building plans were drawn up in 1991 and building work was completed in the following years. We have 2 halls available for hire, a lower and upper hall.



Both are used by regular and ad-hoc users.

St Wilfrid's is fortunate in having well maintained gardens on three sides.

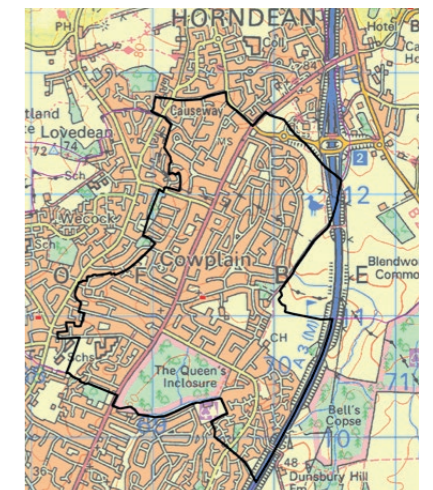
Behind the church is the Memorial Garden. From this garden a gateway leads into an area of orchard, an attractive space, used by groups including Brownies and Rainbows, as well as Messy Church and our Toddler Groups. The orchard provides a beautiful setting for wedding photos, baptism picnic parties, and a tranquil spot for reflection.



LOCAL GEOGRAPHY

The village of Cowplain, which straddles the old A3, can be described as a 'passing through' village. Much like our church building, Cowplain doesn't shout out "Here I am!" However, much like our church building, once you arrive in Cowplain you'll be surprised how much it has to offer.

Cowplain is a residential area within the boundaries of Havant Borough Council with the boundary of East Hants Council near to the church. Enclaves of solitude and peace can be found here. The nearest town, Waterlooville, approximately 1.5 miles to the south, has seen rapid housing expansion in recent times: whereas Cowplain itself hasn't. Although not a heavy industrial area, there is some light industry and many people are employed by local and national retailers.



From the Cowplain vicarage, shops and supermarkets, schools, doctors' surgeries, restaurants and many other amenities are easily accessed on foot; buses are within a few yards and railway stations are easily accessible by bus





or car. Trains go regularly to London, Southampton and Portsmouth and ferries from there will take you to the Isle of Wight and the continent. To the north, the ancient market town of Petersfield is close by and to the south Portsmouth, a magnet for maritime enthusiasts, is home to both the naval and historic dockyards; many local residents are ex-service personnel.

Many villagers have lived in Cowplain for decades – sometimes the whole, or the majority of their lives. Much of the housing in the immediate vicinity of the church and vicarage was built in the 1960s and many of the original residents remain – with the same neighbours – hence a goodly proportion of “empty nesters” and elderly folk abound. At the same time, the local schools are very popular and attract people to the locality.



Approximately half of the people on the electoral roll live within the parish boundaries.

We hope and pray that as you move into the vicarage, you will take pleasure in getting to know your soon-to-be parishioners.



FELLOWSHIP, OUTREACH AND MISSION

Our hope is to grow in strength and unity as we seek to serve the area, we live in. The word most commonly used to describe St Wilfrid’s Church is **welcoming**. We do our very best to ensure that all who venture in receive a warm welcome.

“We remember when we came to St. Wilfrid’s for the first time. We were given such a warm and friendly welcome as we came into the church and people were generally very friendly”.

Over the past 100 years God has worked in and through our congregations to help us to be aware of the needs of our community and to respond appropriately. This resulted in a large building project in the 1990s, when it became apparent that we needed more space, and later, in the birth of Messy Church.

During Bishop Christopher’s visit to St Wilfrid’s to celebrate our 90th birthday in 2013, he described us as a church who punched above our weight. As a church, we have enabled many people to discern, and respond to, God’s calling to become readers and clergy; we have also welcomed numerous curates. Each curate has brought us blessings, and many have left a legacy that continues long after they have moved on to their next parish.

Our Pastoral Care Team was started in 2017, receiving, and responding to,



requests for prayer and pastoral visits. Additionally, each month we send out Pastoral letters (and Prayer Diaries) to those unable to attend church and who are not on email; a team of people take Home Communion to members of our church family. A weekly email keeps many others in touch with St Wilfrid's Church.

We are blessed with Infant and Junior Schools on our doorstep and have been pleased to develop our relationships with them. We have been welcomed to run Prayer Spaces in both schools and to attend school assemblies. We also welcome them into church to celebrate their festivals, explore the building, meet the people and maybe encounter the Holy Spirit. There is opportunity to continue to grow and maintain these strong bonds.

"To date we have held prayer spaces, regular assemblies, attended for our Christmas service and visited to see the Remembrance Day Displays as well as promoted church activities on our Padnell Post such as Messy Church or annual fairs. We look forward to expanding on this with the new vicar and his or her family and working together to support our families."

Mandy Grayson – Headteacher of Padnell Infant school

We have a **Link Missionary**, Alison Giblett, who has been working for many years in Ukraine, ministering to people struggling with addictions. We have been blessed to welcome her several times when she has returned to the UK. Since the war started, we have increased both our prayer and financial support for her. Currently, in association with other churches, we are supporting Alison and her colleagues in their mission to purchase a generator, enabling them to offer refuge, with practical as well as spiritual hospitality, to neighbours in Kyiv.

There is a willingness among **churches in our local area** of different denominations to work together. This is seen as a



positive way to meet the diverse needs of the people in our community, and to promote Christian unity. Since 2015, Hart Plain Church LEP and St Wilfrid's Church have been a 'Mission Partnership' and we have looked for ways in which we can better work together as we seek to demonstrate God's love in our local community. Rev Kate Macfarlane, Incumbent at the neighbouring parish of Hart Plain and Assistant Area Dean, is also licensed as curate at St Wilfrid's Church., The previous Priest-in-Charge at St Wilfrid's was also licensed as curate to Hart Plain. Before the pandemic, there were "pulpit swaps".

We have enjoyed participating in ecumenical Good Friday Walks of Witness and Carols in the Precinct (both pre-Covid and possibly about to be reinstated); Lent Courses, Ash Wednesday and Maundy Thursday are shared between Hart Plain and St Wilfrid's and we join together for Messy Church and eco events.

"I hope and pray that the links between our churches will continue to flourish in the future and that, in our shared mission, we might see God's Kingdom grow."

Rev Kate Macfarlane – Hart Plain Church LEP

"In 2023, I really hope that there would be a new excitement and a new drive for the Local Churches to Work Together in a new and fresh way. I am willing and I know others are, hopefully this can be a resolution in 2023 we can all agree on – 'For where there is unity there is a commanded blessing'."

Rev Sandra Platford – Waterlooville Baptist Church

- Many of our congregation are part of **Connect Groups** – our version of home groups.

- Over eight years ago **Community Coffee Cup** was born to reach out to people in the outskirts of our parish. It is held in a local community centre offering refreshments, fellowship and fun for all ages free of charge, following successful bids for funding from local organisations.
- **Our two art groups** grew from a fundraising weekend for the Church Building Fund, 20 years ago. Both work hard to welcome and to encourage members of the wider community. Strong bonds of support grow within the membership, with participants engaging in church events and drawing in friends. An annual Art Exhibition not only gives a glimpse of amazing talents but also raises funds for the church and other causes.
- **TLC (tea and lovely cakes)** offers fortnightly meetings on a Sunday afternoon for fellowship (and cake!).
- **Bereavement Support Meetings** occur monthly.
- The church **Eco Team** encourages us, through worship and teaching, to adopt sustainable ways of caring for God's creation.

We enjoy providing a **traditional lunch on Christmas Day** for around 25-30 people. This is for those who would otherwise be on their own. The three-course lunch is followed by carols round the piano in church, and games. Everyone who attends receives a gift and enjoys Christmas cake before going home. This free event is always popular; it is fully funded by gifts from church members and any donations received on the day are shared between the charities selected by the church.

COWPLAIN COWTRAIL

The origins of the Cowtrail were to celebrate Cowplain and St Wilfrid's part in it.

Held in our local woodland, Queens Inclosure, it has grown into a community event involving local shops, preschools, primary schools and a special school. Refreshments and a range of other activities are offered, free of charge, to all who take part.

WHAT NEXT? IS SOMETHING MISSING?

We have set aside a community fund from donations and are trialling a Warm Spaces venture. This links with our vision to be the heart of the community.

However, changes occur naturally and over time we have lost a number of groups – including Mothers Union and a Men's Group, so now is just the time for us to introduce more social opportunities.

EMBRACING TECHNOLOGY

During the last couple of years with Covid restrictions in place we sought to engage further with the community by offering courses online, including Alpha, Start, Parenting through Faith and Marriage Courses. People who have been attending our Toddler groups were among those who joined in the courses.

St Wilfrid's is a church that has done incredible things in the name of God in the past and it is our hope that we will discover where He is calling us next.

“We value our past and want to look forward positively to our future”

SAFEGUARDING

We work closely with the Diocese to provide a safe space for people and children of all ages to meet. We liaise with the Diocese on policies, including training, casework and pastoral concerns. The Parish Safeguarding Officer reports regularly to the PCC to update on latest developments and the parish dashboard.

The PSO also attends the diocesan networking meetings and is currently working on involving key people in our parish to liaise with the PCC and congregations and visitors about various subjects.

This year's programme will involve domestic abuse awareness, becoming a dementia friendly church and recognising bullying. These will be in conjunction with the Diocese.

GENERAL DATA PROTECTION REGULATION (GDPR) & COMPLIANCE

We are very mindful of GDPR legislation and have a GDPR Compliance Officer.

READY TO GO!

We have engaged in a number of courses in evangelism (Leading Your Church in Growth and being part of the Learning Community supported by the Lead Academy)

Topics have been explored and we have spent time thinking up straplines and slogans to describe our desire to move forward - in living out and proclaiming the gospel.

We have had exciting "Away Times", most recently Re-Connect in February 2022 and we have welcomed people to lead training for us (including a memorable weekend with The Ugly Duckling Company); each has led us forward in small and important ways.

We recognise these familiar slogans:

- *Worshippers, Disciples and Witnesses*
- *Disciples who make Disciples*

"Our desire is to be at the heart of the community"

All of these are embraced at the level of intention - and now we need a leader to help us to turn them into plans of action.

Our Mission Action Plan depicts the many things that we are doing already and now it is time for us to move forwards.

Our plans include:

- maintaining and growing all the good things we are doing already;
- celebrating our centenary;

- appointing a vergers;
- appointing an organist;
- planning a stewardship campaign;
- appraising relevant AV equipment;
- recruiting more volunteers for the many tasks;
- welcoming a new Parish Priest.



CONCLUSION

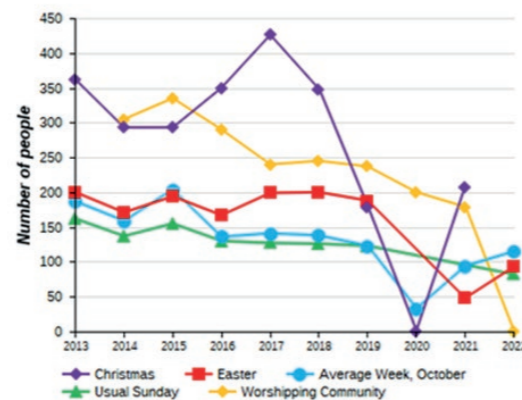
God has shown that He will support us when we answer his call. As our new parish priest, we pray that you will be able to lead us forward in His vision. There is a strong sense that St Wilfrid's is in a transitional stage – and that we are ready to enter a new and exciting phase in our history. We look forward to welcoming you to our parish and working with you to explore God's vision for us going forward.

October 2022	Sunday 2 nd		Thursday 6 th		Sunday 9 th		Thurs-day 13 th		Sunday 16 th		Thursday 20 th		Sunday 23 rd		Thurs day 27 th		Sunday 30 th	
	9am	11am	10:30am	11am	9am	11am	10:30am	9am	11am	10:30am	9am	11am	10:30am	9am	11am	10:30am	10am	
	Total Adults	32	45	37	34	53	23	26	42	32	30	38	30	73				
Statistics for Mission	32	42	27	34	47	12	26	40	20	30	33	22	73					
Children		11			14			10				12	12					

– each person is counted only once in the week.

151 different adults have attended over the month; 44 of them only attended once; 25 people attended 5 times (and more!) and 29 people attended 4 times.

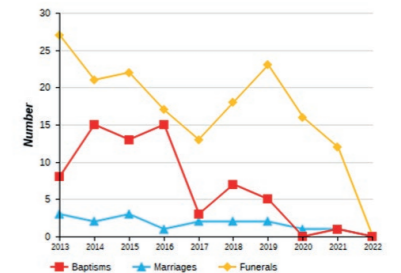
Attendance of children might be regarded as “steady”, even though Sunday Club is only twice a month; 25 different children attended during the month – 2 of them brand new babies.



Uncertain weather, with lots of very heavy showers, probably affected attendance at every service in October.

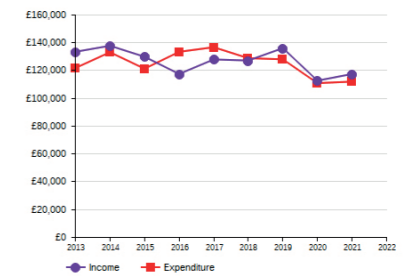
OCCASIONAL OFFICES.

Baptisms, Weddings and especially Funerals have been relatively few in number until recently, but the numbers of Baptism and Thanksgiving services for babies are now increasing significantly.



FINANCES

St Wilfrid's finances have been fragile but stable for some time; each year income has matched or slightly exceeded expenditure.



A record of paying 100% of the Diocesan Parish Share has been achieved.

THE VICARAGE

The vicarage is a 1950s family house to the rear of the church and halls. It is a large detached property that offers three reception rooms, five bedrooms and a large fenced garden with two brick outbuildings, one of which has an electricity supply.





It has gas central heating and is double glazed throughout. There is a large but not double garage and off street parking

If you would like to take a **virtual tour** of the vicarage please contact churchwarden.steve@stwilfridscowplain.co.uk for a link

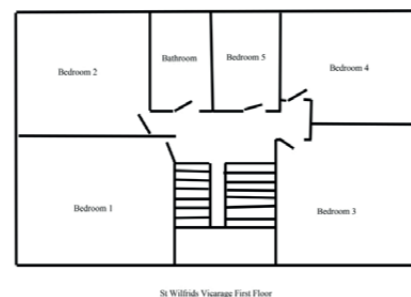
The Ground Floor Accommodation comprises the following:

- Entrance hallway; Large living room; Dining room; Study with shelving for books; Kitchen; Downstairs WC.



The First Floor Accommodation comprises the following:

- Four double bedrooms, two with basins; A further single bedroom; Bathroom with shower over the bath.




INTRODUCTION TO THE DIOCESE OF PORTSMOUTH

The Diocese of Portsmouth stretches across south-east Hampshire and includes the whole of the Isle of Wight. It includes 139 parishes, from Botley in the west to Emsworth in the east, and from Blackmoor in the north to Ventnor on south side of the Isle of Wight. It includes diverse communities, ranging from the densely populated and relatively deprived parts of inner-city Portsmouth, to rural villages in Hampshire; and from a range of seaside towns on the Isle of Wight to suburban communities west of Fareham and Gosport. In total, it covers 420 square miles and has a population of 784,000.

The Diocese of Portsmouth has 170 churches, ranging from historic listed buildings to brand new, purpose-built churches. There are around 150 clergy serving in those churches and their parishes, around 50 of whom are self-supporting. There are also around 70 licensed lay ministers who help with leading services and pastoral work. Around 13,500 people regularly worship in our churches, on Sundays and during the week. Attendance numbers have been declining over the past 10 years, but there are particular congregations that have grown. Only a tiny number of churches have been closed in recent years.

Parishes and chaplaincies within the diocese are supported by a small diocesan team, based in Peninsular House, Portsmouth. These officers support parishes and church schools, administer clergy housing and stipends, manage its property portfolio, promote social justice, handle communications, manage safeguarding procedures, and run a variety of training courses. The Diocesan Secretary oversees these staff. Separate teams of staff are employed in the bishop's office and for the three archdeacons. There is no suffragan bishop.

The diocese includes 41 Church of England schools in south-east Hampshire and the Isle of Wight. These are still mostly schools funded by the local authority, but the diocese supports them with regard to governance and admissions, building projects, Christian ethos, RE and recruitment of



headteachers. The education team supports schools across both Portsmouth and Winchester dioceses, under the authority of a Joint Board of Education. Two schools on the Isle of Wight are joint Church of England/Roman Catholic schools.



Bishop Jonathan Frost was installed in March 2022, and has shared his vision for the diocese – a place where all are invited into a life-enhancing encounter with Jesus Christ. It should be a place where children, young people and young adults are given a particular priority; and where ministry to the elderly is supported by a network of Anna Chaplains, working in every locality. The vision

is encapsulated by a vocational call to all Christians, entitled **Live | Pray | Serve**, which has been supported by strategic funding from the national Church of England to promote the planting of new congregations and a network of pioneer ministers. You can read more about our vision and vocation at portsmouth.anglican.org/liveprayserve.

The Diocese of Portsmouth is one of the smallest dioceses in the Church of England, but has often “punched above its weight”, with senior staff and diocesan officers involved in the national Church, managing joint projects or implementing innovative ideas. Financially, the payment of parish share has always been good – but the recent Covid pandemic has resulted in some financial challenges.

There is a range of churchmanship across all traditions within the diocese, few parishes deliberately exclude themselves from deanery and diocesan initiatives, and our smaller, family feel means that most clergy and lay leaders know and respect each other.





Diocese
of Portsmouth



1st Floor, Peninsular House
Wharf Road
Portsmouth
PO2 8HB
023 9289 9650
portsmouth.anglican.org

@CofEPortsmouth



 THE CHURCH
OF ENGLAND