

Milton

PARISH PROFILE



THE CHURCH
OF ENGLAND



Diocese
of Portsmouth

CONTENTS

Bishop's Welcome	3
Deanery Introduction	4
Welcome	6
Introduction	8
Portsmouth Deanery	10
Our Vision	11
Our Church Life	13
Our Team	19
Our Organisation	20
The House	22
Role Description	23
Appendix	26
Introduction to the Diocese of Portsmouth	27

BISHOP'S WELCOME

The Diocese of Portsmouth is in good heart and together we have heard God's call to Live, Pray and Serve the Kingdom of Christ, in and for the world.

If you sense the good Lord is calling you to join in with this beautiful work of retrieval and love we will be ready to receive you – all that you bring – in the days ahead.

With my prayers and blessing,

Jonathan Portsmouth



THE RT REV JONATHAN FROST,
BISHOP OF PORTSMOUTH

DEANERY INTRODUCTION

As a Deanery we are looking forward to welcoming the new Vicar of St James and are excited at this opportunity to have a priest serving this Church and community and being part of our shared response to the Diocesan vision and plan.

As part of the Diocesan vision and strategy the Deanery has a 'plan' which has evolved over a number of years and responds to changes of context and circumstance.

At its heart is a vision of local Parishes developing strong relationships and sharing resources, gifts and skills in the service of God and the community.



ORDINATIONS AT PORTSMOUTH CATHEDRAL



CONTEMPORARY WORSHIP AT ST JUDE'S CHURCH, SOUTHSEA

Within this plan Milton is part of the 'Southern Cluster' and we wish to explore with the new Incumbent and the Parish its relationships with St Jude's, St Simon's and St Margaret's. There are good foundations in terms of relationships and we have



CARIBBEAN DANCE AT ST MARGARET'S CHURCH, SOUTHSEA



THE CHOIR OF ST MARY'S CHURCH, PORTSEA

recognised, as a deanery, that there are particular needs within Eastney (in the parish) which could be developed as a cluster. We hope these ideas and plans will continue to develop and expect the person appointed to this post to play their part in building these important relationships.

The Deanery clergy also value the support they can give to one another and encourages all incumbents to be a regular member of Chapter and the Incumbents lunches. The Parish is within the 'care' of the Associate Area Dean (currently vacant) who meets regularly with all the clergy in the cluster, and is always willing to meet, listen and support the clergy in this area.

I am happy to answer any question there may be on the post as both Area Dean and Patron

*Rev Canon Bob White
Vicar of St Mary's Portsea and Area Dean of Portsmouth
revrcwhite@gmail.com*

WELCOME

We are an active and highly motivated church within the vibrant area of Milton, Southsea, and the largest Parish within the Diocese.

We maintain the rites and theology of an Anglican high church worshipping congregation.



We express our faith with traditional music, the use of traditional High Anglican ritual and a varied community and social life.

The Diocese of Portsmouth is an exciting place to be at the moment with Bishop Jonathan recently sharing the plan for mission, ministry and finance. The Bishop invites the Deanery to reframe our deaneries' existing plans for mission and ministry through the prism of a single strategic priority:



- We deliberately prioritise our work with children, young people and young adults, to bring life-enhancing encounters with Jesus to a new generation.
- This priority is set in the context of the provision of Anna Chaplaincy to support older people in every parish, benefice and cluster across the diocese. Bishop Jonathan made care for older people one of his main priorities, in his presidential address at the April 2022 meeting of the Diocesan Synod.

Bishop Jonathan has invited us to pray and work together, as we shape a future vision for our diocese. He has offered us a roadmap for 2022, which can be read [here](#).

We pray that, if God is calling you to join us in his mission in this part of the world, he will make his will abundantly clear to you.

INTRODUCTION

We are seeking and praying for an active and practical Vicar who will guide us in our faith and mission to serve God in our community.

The parish of Milton is situated on the eastern side of Portsea Island (Portsmouth). It is an attractive residential area with parks and open spaces, good local shops and amenities and many leisure facilities. Eastney beach, within walking distance of St James Church, is at the east end of a five-mile-long seafront promenade which stretches from Portsmouth Harbour to Langstone Harbour where a small passenger ferry crosses to Hayling Island. There are pleasant walks to be had on Milton Common where its eastern edge adjoins the Langstone Harbour foreshore. Many wading birds can be spotted there and the harbour is a favourite place for sailing with Sailing and Yacht Clubs based in the parish.

Ferries from Portsmouth Harbour, both passenger ferry and car ferry, run daily to the Isle of Wight. There are cross-channel ferries running to France, Spain and the Channel Islands. It is also the home of the Royal Navy where Nelson's flagship HMS Victory, the oldest commissioned warship in the fleet, holds pride of place, closely followed by HMS Warrior and the wreck of Henry VIII's Tudor warship the Mary Rose. The historic Dockyard is a big visitor attraction and displays 800 years of Naval history. There are several railway stations within the city, one being within easy walking distance of the parish church.

The city has two Cathedrals, St John's Roman Catholic Cathedral and our own Cathedral Church of St Thomas of Canterbury. There are two fine Victorian theatres and some



excellent museums, including one being the birthplace of Charles Dickens and another being the D-Day Museum. Southsea Castle, situated proudly on the seafront, was built by Henry VIII in 1544 to protect from invasion.

The city is also home to Portsmouth FC which is situated within the parish. The Club was founded in 1898 by among others Sir Arthur Conan Doyle who practiced as a doctor in the city. Previous success has seen the club enjoy seven seasons in the Premier League and become winners of the FA Cup Final in 2008, beaten finalists in 2010.

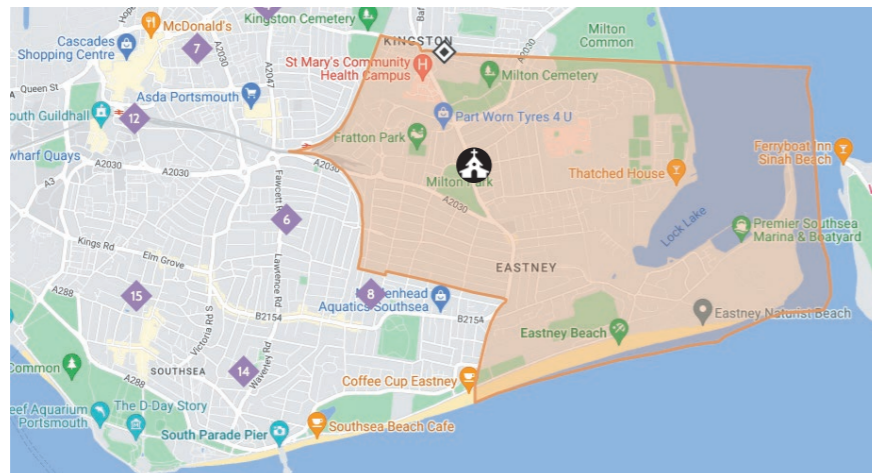
The Great South Run has been successfully staged in the city for many years. There are many sporting facilities available across the city for use by the community including the Mountbatten Centre in the north of the city which houses a range of sporting facilities including an Olympic sized swimming pool and recognised athletics track. There are also plans to build new sporting facilities in Bransbury Park, a short walk from St James. This will include swimming pool, sports centre and community hub. This is still in the consultation phase.

PORTSMOUTH DEANERY

Portsmouth diocese is made up of the 11,000 or so worshippers in the 139 Church of England parishes across south-east Hampshire and the Isle of Wight. They are led by our bishop, and include clergy, Readers, retired clergy, chaplains, paid staff and thousand of volunteers who work in our parishes.

The diocese is also divided into seven deaneries, each of which co-ordinates the mission and ministry of parishes in their area. Portsmouth Deanery sits within the Archdeaconry of Portsdown.

The current vision is to live as disciples of Christ, pray individually and together, and to serve our communities – hence the vision is described as **Live | Pray | Serve**.



The population of the Parish of St James, as per the 2011 Census was 23,700 and has most definitely risen since then (2021 census has not yet been published), housed in mainly privately owned terrace housing with some council housing, housing association homes and a few houses owned by the MoD. Extensive new housing has been established in the past few years with more in the process of being built.

OUR VISION

What kind of Church do we want to be?

- Responsive to God's love and to God's call
- Inclusive to all
- Relevant to all
- Joyful in worship
- Constant in prayer
- United in our care for each other and for the world in which we live

What are our aims for the future?

- To grow together in the Holy Spirit
- To make God's love known as widely as possible
- To make our Church accessible to young and older people
- To engage fully with the local and wider communities
- To collaborate fully with neighbouring churches whilst upholding our catholic traditions





OBJECTIVES AND ACTIVITIES

St James' PCC has the responsibility of promoting in the ecclesiastical parish the whole mission of the Church: pastoral, evangelistic, social and ecumenical. It is also responsible for maintaining the Church/Hall complex of St James, Milton, in the Diocese of Portsmouth together with the one property owned by the parish at 51 Goldsmith Avenue.



OUR CHURCH LIFE

Like any family we support each other. We have a large congregation on Sunday mornings made up of mostly local people. We have been told we are a welcoming and friendly Church. We enjoy worshipping together and our visiting priests have commented on how much they have enjoyed being part of our worship. We also have fun together at many social events. Indeed, there are many social opportunities to encourage fellowship and a real feeling of belonging.

The Churchwardens seek to work closely with the Parish clergy in managing the day to day running of the Church. This aspect of working together is of great importance for the work and worship of the Church. The Churchwardens constantly advise and inform the Parochial Church Council of all relevant information received from the Diocese. Currently the Sacristan deals with baptisms, banns and wedding bookings on Saturday mornings. To assist with services, we also have the valued support of two retired priests and a Reader.



St James' Church halls (built within the existing church building) are used extensively by the local community with regular groups including Model Railway, Milton Glee Choir, Slimming World and Craft Club. More recently St James has hosted the Milton Neighbourhood Forum and Pompey in the Community (PITC) are in the process of organising some well-being courses. In addition, Uniformed Junior Groups and private functions also use the halls regularly. The lower hall is also hired out by the local council to use as a



Polling Station.

Local schools hold Harvest Thanksgiving and Carol Concerts/ Nativities every year and also bring class groups to church regularly to experience the 'special space' and learn something about the building and its uses.

LITTLE SHELLS

Little Shells is part of St James' desire to find new ways of engaging with and serving our community. It is a parent and carer and toddler group, established after lockdown as we discovered that many new parents and their children were isolated. It meets in the church hall twice a month for chat, coffee, cake and a song and dance at the end, with around 20 children and 20 adults attending each session. At festivals we go into the church and have a very short service.



It is evangelism, but with the lightest touch. The presence of church members and clergy has established strong pastoral links and conversations about faith. Moreover, it has enabled

church members who want to help but might not be able to, to contribute in other ways; by making donations of toys or cash with which to buy toys or to bake cakes for each session. Around 5 baptisms have come from this group, and it has established long standing relationships with young parents with whom we would otherwise have limited engagement.

GOSPEL GOSSIP

After the service every Wednesday we get together and explore the Gospel of that week. It's also a time to come together and talk about anything that may be bothering us.



CHOIR CHURCH

Choir Church has been a project running in the parish of St James seeking to build new worshipping communities using music and built around children's choirs in schools. We are very grateful to the people of St James for their support for this initiative. The experience gained in this parish setting will be invaluable in planning similar initiatives in other parts of the diocese.

UNIFORMED ORGANISATIONS

Scouts, Cubs and Beavers meet Monday evenings; Brownies meet Tuesday evenings and Guides meet Thursday evenings. All meet weekly in term time. Occasionally there are monthly parade services which are very well supported by the Scouts, Cubs and Beavers.



CHOIR

We have a small but loyal group of robed adult choristers and an organist. They practice once a week and can always be called upon to provide support to weddings, funerals and any special festival services.

PRAYER GROUP

The Cenacle Prayer Group, previously our online Gospel Gossip group, meets twice monthly on the first and third Tuesdays of each month, followed by mass at 12 noon in the Good Shepherd chapel. The aim of the group is to pursue a balanced approach to silent, meditative prayer grounded in simple short sentences from scripture, without leaving participants lost in too much silence. Meetings begin with an opportunity to catch up with each other's news and share whatever is in our hearts for prayer. Participants are invited to reflect silently on how God might be speaking to each one of us through the chosen scripture sentences. The group draws on the practice of *lectio divina* and is currently led by Fr John.

CLIMATE GROUP

Green Shoots is a group that was formed in response to the Church of England's target to reach a net zero carbon target by 2030. The group considers our stewardship of creation and plans action that moves us towards this target within our church, as part of the wider Portsmouth community and overseas through our engagement with the Fairtrade foundation. The group meets once a month with about 10 members each time.

SERVERS

We have a team of servers, both male and female of all ages, who cover all Sunday and other services under a rota system.

THE SHELL GROUP

The Shell Club is our provision during services, which meets in the hall around once a month for song and dance, crafts and a story. Around 6-8 children attend. We also organised a trip to the pantomime at Christmas for the children.

We are hoping to build this up further, and create a structure in which the parents of the children would lead sessions.

They have expressed enthusiasm for doing so. There is a small collection of toys and books at the back of the church in the children's corner for those children who are too shy to leave their parents.

LADIES GUILD

Ladies of the congregation and the local community have met as the Ladies





Guild for more than fifty years. This is a flourishing group and currently has a membership of around 30. They meet the first Tuesday each month, entertain speakers and undertake outings to places of interest.

MEN'S FELLOWSHIP

The men of the congregation have met for the past ten years or so on the second Thursday of every month. They are usually entertained by a speaker and often meet in the local RMA Club. The membership of this group is relatively small, but loyal.

WALSINGHAM CELL

After a visit to Walsingham in 2013 a cell of the Society of Our Lady of Walsingham was created with 12 members from our congregation. Annual pilgrimages have since taken place with around 20 attending. Three years were missed due to the pandemic and interregnum but the Pilgrims are looking forward to visiting again with their new priest.



OUR TEAM



Father John Strain
HONORARY ASSISTANT PRIEST



Father Paul Ginever
HONORARY ASSISTANT PRIEST



Alastair Ross
CHOIR CHURCH LEADER



Marilyn Palmer
READER



Stella Wansborough & Mark Pearce
CHURCHWARDENS



Hugh Darnley-Smith
ORGANIST & CHOIRMASTER

OUR ORGANISATION

GOVERNANCE

St James' Church is sited at 285/287 Milton Road, Southsea. The ecclesiastical parish is situated in the Diocese of Portsmouth within the Church of England. The correspondence address is St James Vicarage, 287 Milton Road, Southsea, PO4 8PG.

The Parochial Church Council (PCC) is a registered charity with the Charity Commission, number 1129165. Members of the PCC are either ex officio or elected at the Annual General Meeting (APCM) in accordance with the Church Representation Rules.

The PCC has the responsibility of co-operating with the Incumbent, in promoting in the ecclesiastical parish the whole mission of the Church: pastoral, evangelistic, social and ecumenical. It is also responsible for financial affairs and maintaining the Church/Hall complex of St James Milton in the Diocese of Portsmouth together with the property owned by the Parish at 51 Goldsmith Avenue, a four-bedroom semi-detached house.

The method of appointment of members of the PCC is set out in the Church Representation Rules. All Church attendees are encouraged to register on the Electoral Roll and stand for election to the PCC. The PCC meets 6 times a year.

The Standing Committee is the only statutory committee operating. It has power to transact the business of the PCC between its meetings, subject to any directions given by the Parochial Church Council.

There are 135 parishioners on the Electoral Roll. The average weekly attendance is 76 adults and 4 children, but this number increases at festivals. In 2019, pre-pandemic, there were 31

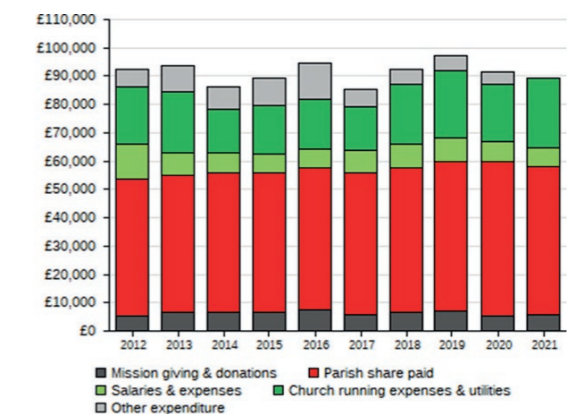
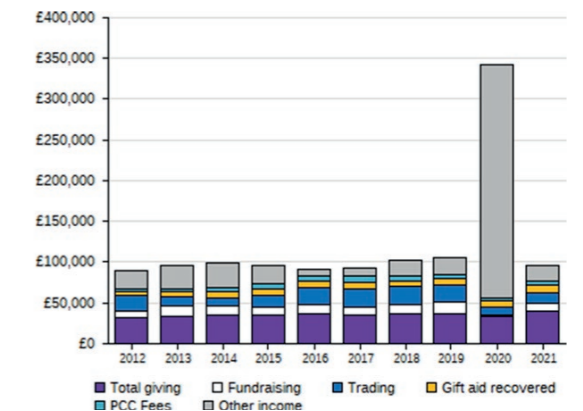
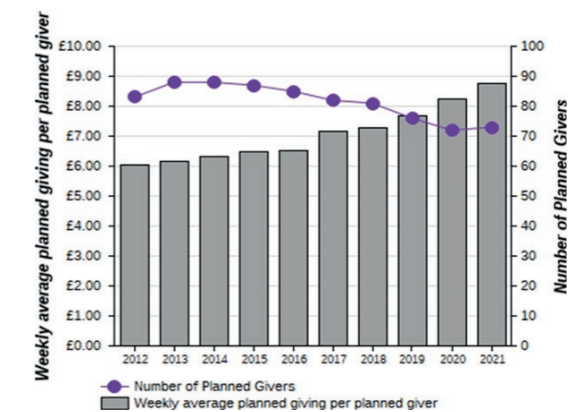
baptisms, 5 weddings, 4 renewal of vows and 49 funerals conducted. The funerals were either in St James, Crematorium or were Interment of Ashes. As at the end of July 2022 there have been 8 baptisms, 3 weddings, 2 renewal of vows and 17 funerals. Numbers for our two Christingle services held in Dec 2021 were just short of 300.

FINANCES

General funds represent the funds of the PCC that are not subject to any restrictions regarding their use and are available for application for the general purposes of the PCC. Funds designated for a particular purpose by the PCC are also unrestricted.

The Diocesan Quota or Parish Share is accounted for when payable and is paid in full each year.

The buildings are managed by the Churchwardens and Standing Committee. We are currently in the process of beginning a large roof repair project. Funds have been raised to cover this with the sale of one property and the release of endowment trusts (already approved by the Charity Commission and being held by the Diocese).

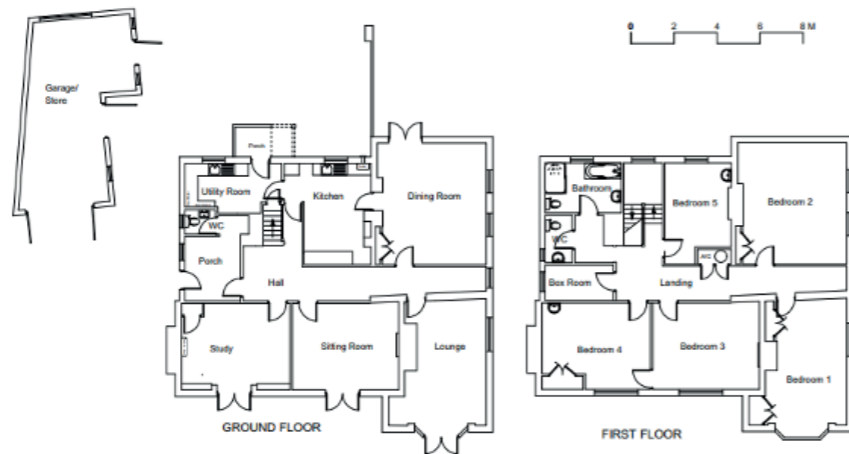


THE HOUSE



The Vicarage is situated within the Church grounds, in fact within the old Church wall.

It has a lounge, dining room, study and toilet downstairs with 5 spacious bedrooms and bathroom upstairs. Along with a garage and very generous drive the house boasts a large, established garden. The house has been well maintained with a new kitchen and utility room fitted in the last few years. At the moment the house is tenanted by a Diocesan worker and his family. The Parish has undertaken to ensure that the house is handed over to the new incumbent in a good condition.



ROLE DESCRIPTION

This Role Description should be read in conjunction with the vision, objectives and activities set out in this profile. The role is for a priest who will lead, support and nurture the inhabitants of this diverse parish and build upon the vital engagement with the community, ensuring pastoral needs are met. It is for an experienced leader who will carry significant oversight and strategic development responsibilities. As our Vicar we are seeking someone who will:

SPIRITUALITY

- Follows an ordered personal, spiritual life of daily prayer and Bible study and shares the fruits of their own discipleship with others,
- Seeks to follow the model given us by Jesus Christ of active ministry and time out for reflection and prayer in quiet days and retreats.
- Balances time with family and friends with the demands of parish life.

WORSHIP AND PREACHING

- Is comfortable leading and participating in the current diversity of our parish services, and will enrich them.
- Supports and encourages the ministry of lay people in leading services.
- In preaching and other communication, presents and interprets the Christian message in relevant and inspiring ways that encourage us to live and witness as Christians in the 21st century.

LEADERSHIP AND COLLABORATION

- Is a servant leader and proven team player, committed to working collaboratively with all in the parish, and can lead or be a team member, as appropriate.
- Is an effective delegator and decision maker, able to manage their workload and capable under pressure.
- Is a capable chair of meetings who will ensure that voices are heard and valued and also clear decisions are reached and implemented.



DISCIPLESHIP, LEARNING AND NURTURE

- Is open and creative in their approach to Christian discipleship and spiritual growth, strongly committed to seeing God's people grow and mature in faith and use their gifts in God's service.
- Will actively encourage others in their discipleship.
- Is prepared to lead or co-lead discipleship, nurture courses and is committed to the growth of small groups.

EVANGELISM AND ENGAGEMENT WITH SOCIAL JUSTICE

- Is proactive and persuasive in sharing their faith with others and can enable others to gain confidence to do the same.
- Understands the imperative and breadth of parish outreach and mission (including the Eastern part of the Parish which is a vast area), and will work and encourage others in mission, fair trade and outreach activities.
- Is experienced in working with schools and is committed to further develop our relationships with local schools and with young people beyond schools.

PASTORAL CARE

- Is approachable and sensitive to varied pastoral needs of our church family and wider community and willing to share pastoral care with our team of lay pastors.

STEWARDSHIP AND PARISH ORGANISATION

- Exhibits and proactively encourages generosity in the discipleship of church members, in the giving of their time, talents and money.
- Brings and displays the proven ability to plan, organise, manage, chair meetings and communicate effectively with the clergy team, Churchwardens and Parish Office.



COLLABORATION AND LINKS WITH OTHER BODIES

- Is committed to working with local churches, such as St Margaret's and Holy Spirit, and encouraging others to do so.
- Actively encourages the support of our mission partners.
- Plays an active part in Deanery (through chapter and synod) and Diocesan life.

The role description should always be read in conjunction with the [Guidelines for the Professional Conduct of the Clergy](#).

APPENDIX

PATTERN OF SERVICES

DAY	TIME	SERVICE
Sunday	8am	Said Mass with Homily
	10am	Sung Mass with Homily (Shell Club once a month)
	Noon	Holy Baptism (First Sunday of the month)
	8pm	Compline (online only)
Tuesday	Noon	Said Mass
Wednesday	10am	Said Mass (with short Homily)
	8pm	Compline (online only)
Monday to Thursday	9am	Morning Prayer
	5.30pm	Evening Prayer
Saturday	9am	Morning Prayer

‘To this end also we pray for you always, that our God will count you worthy of your calling, and fulfil every desire for goodness and the work of faith with power’ 2 Thessalonians 1:11

<https://stjamesmilton.org.uk>
<https://www.facebook.com/StJamesMiltonUK>

INTRODUCTION TO THE DIOCESE OF PORTSMOUTH

The Diocese of Portsmouth stretches across south-east Hampshire and includes the whole of the Isle of Wight. It includes 139 parishes, from Botley in the west to Emsworth in the east, and from Blackmoor in the north to Ventnor on south side of the Isle of Wight. It includes diverse communities, ranging from the densely populated and relatively deprived parts of inner-city Portsmouth, to rural villages in Hampshire; and from a range of seaside towns on the Isle of Wight to suburban communities west of Fareham and Gosport. In total, it covers 420 square miles and has a population of 784,000.

The Diocese of Portsmouth has 170 churches, ranging from historic listed buildings to brand new, purpose-built churches. There are around 150 clergy serving in those churches and their parishes, around 50 of whom are self-supporting. There are also around 70 licensed lay ministers who help with leading services and pastoral work. Around 13,500 people regularly worship in our churches, on Sundays and during the week. Attendance numbers have been declining over the past 10 years, but there are particular congregations that have grown. Only a tiny number of churches have been closed in recent years.

Parishes and chaplaincies within the diocese are supported by a small diocesan team, based in Peninsular House, Portsmouth. These officers support parishes and church schools, administer clergy housing and stipends, manage its property portfolio, promote social justice, handle communications, manage safeguarding procedures, and run a variety of training courses. The Diocesan Secretary oversees these staff. Separate teams of staff are employed in the bishop’s office and for the three archdeacons. There is no suffragan bishop.

The diocese includes 41 Church of England schools in south-east Hampshire and the Isle of Wight. These are still mostly schools funded by the local authority, but the diocese supports them with regard to governance and admissions, building projects, Christian ethos, RE and recruitment of headteachers. The education team supports schools across both Portsmouth



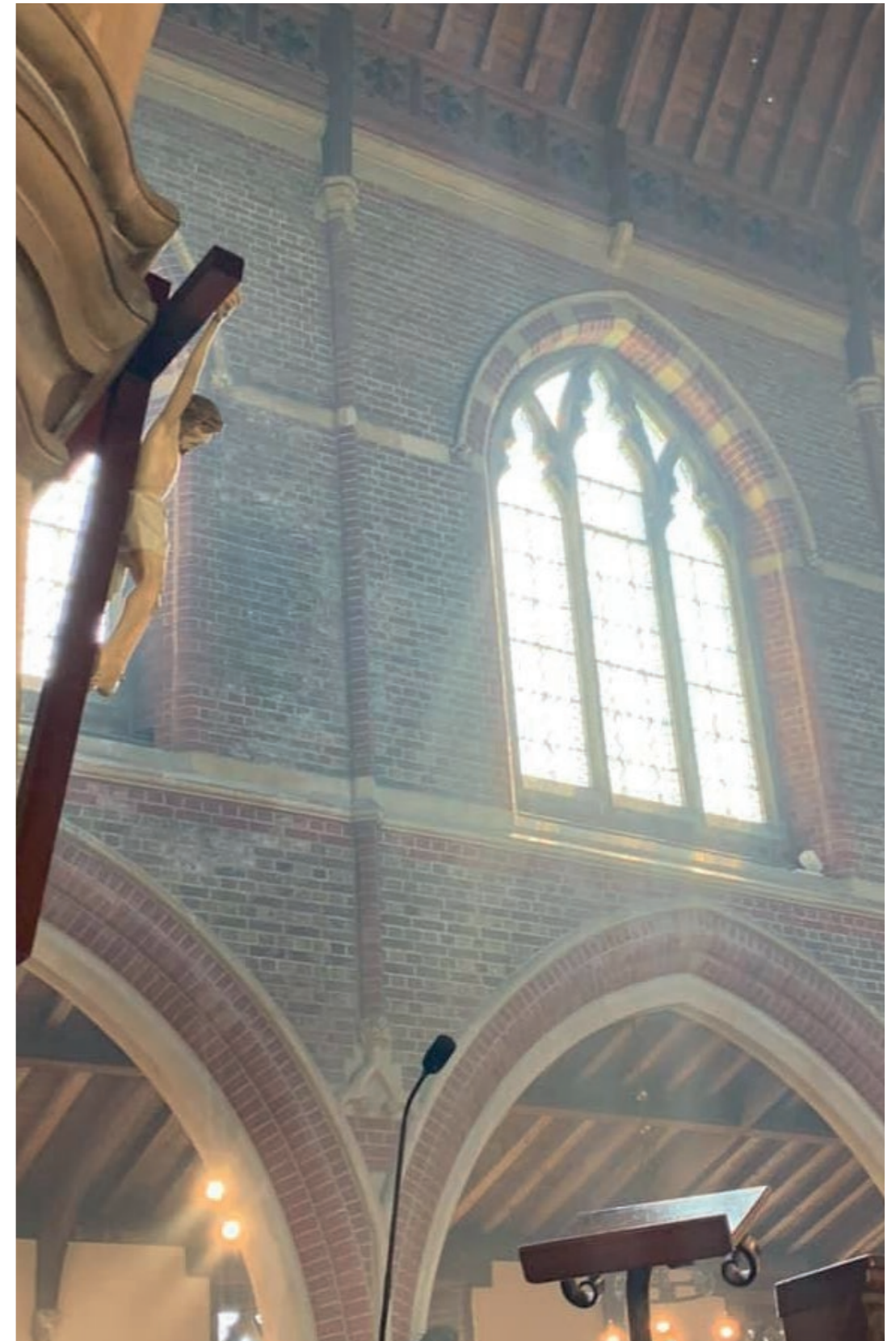
and Winchester dioceses, under the authority of a Joint Board of Education. Two schools on the Isle of Wight are joint Church of England/Roman Catholic schools.

Bishop Jonathan Frost was installed in March 2022, and has shared his vision for the diocese – a place where all are invited into a life-enhancing encounter with Jesus Christ. It should be a place where children, young people and young adults are given a particular priority; and where ministry to the elderly is supported by a network of Anna Chaplains, working in every locality. The vision is encapsulated by a vocational call to all Christians, entitled **Live | Pray | Serve**, which has been supported by strategic funding from the national Church of England to promote the planting of new congregations and a network of pioneer ministers. You can read more about our vision and vocation at portsmouth.anglican.org/liveprayserve.



The Diocese of Portsmouth is one of the smallest dioceses in the Church of England, but has often “punched above its weight”, with senior staff and diocesan officers involved in the national Church, managing joint projects or implementing innovative ideas. Financially, the payment of parish share has always been good – but the recent Covid pandemic has resulted in some financial challenges.

There is a range of churchmanship across all traditions within the diocese, few parishes deliberately exclude themselves from deanery and diocesan initiatives, and our smaller, family feel means that most clergy and lay leaders know and respect each other.





1st Floor, Peninsular House
Wharf Road
Portsmouth
PO2 8HB
023 9289 9650
portsmouth.anglican.org

@CofEPortsmouth



 THE CHURCH
OF ENGLAND