



# Rowlands Castle Parish Profile



# A warm welcome from St John's!



We are a warm and friendly church family situated in the village of Rowlands Castle in the south-east corner of Hampshire in the Diocese of Portsmouth. We are home to a growing population of some 3000 souls but our church family is drawn both from inside the village and from the surrounding area.

We are both evangelical and gently charismatic in outlook but make a home for our more traditionally-minded folk through our weekly 8am service of Holy Communion. Our main service is informal with more modern worship and an emphasis on biblical teaching.

We are blessed to have five Readers and a congregation who strive to practice every-member ministry and who seek to have an impact for the Kingdom of God in the local community through mission, outreach and service.

We are prayerfully seeking a person of God's choosing to lead us into the next phase of our development as a Christian community. Someone to nurture us and challenge us, to grow us and to help us build the Kingdom here. Someone who will encourage us to seek God in all we do and equip us to be the body of Christ not only in church activities, but more importantly beyond the walls in our everyday lives.

We pray that as you read on, the Lord will give you discernment and wisdom to determine whether Rowlands Castle is the place He wishes you to serve in your next post.



# Contents



<b>We are seeking an incumbent....</b>	<b>4</b>
<b>Working together</b>	<b>5</b>
<b>St John's today</b>	<b>6</b>
<b>Our prayers for the future</b>	<b>7</b>
<b>Go and make disciples</b>	<b>8</b>
<b>Fellowship and Pastoral Care</b>	<b>9</b>
<b>Outreach</b>	<b>10</b>
<b>Worship</b>	<b>11</b>
<b>Service</b>	<b>12</b>
<b>Our work with young people</b>	<b>13</b>
<b>Generosity</b>	<b>14</b>
<b>Governance</b>	<b>15</b>
<b>Finance and Stewardship</b>	<b>16</b>
<b>Buildings and Facilities</b>	<b>17</b>
<b>The Rectory in Rowlands Castle</b>	<b>19</b>
<b>The Parsonage in Blendworth</b>	<b>20</b>
<b>Rowlands Castle and the local area</b>	<b>21</b>
<b>Parish Contacts</b>	<b>22</b>

# We are seeking a new incumbent who...

We are looking for a new leader who has the passion, skills and vision to build on the foundations of growth and renewal that have been laid by previous leaders.

We would like to receive applications from candidates who have a real sense of calling from God to this parish and who demonstrate many of the attributes and values we aspire to.

## *We are looking for a person who is:*

- A leader who will continue the open evangelical ministry in the parish with its high regard for the authority of scripture as a basis for preaching, teaching and living
- A gifted biblical teacher and passionate communicator of the Gospel
- A supporter of Reader ministry with a proven track record of encouraging every-member ministry
- A pastorally sensitive listener and leader
- An advocate for training and personal development, with an associated willingness to delegate to those who have gifts in ministry

We recognise that our new Vicar may not have all of these qualities but we believe that the Body of Christ should possess all the gifts necessary to be a fully functioning church. Therefore our new leader should be someone who can recognise and develop a team of people who can demonstrate the full range of spiritual gifts and talents.

We strive towards a balance between mission, including outreach and service, discipleship, worship and pastoral care

We know that ministry, whether full or part-time can be very demanding, physically, emotionally and spiritually. We encourage our leaders to take time to re-charge their batteries and to reconnect with God on a regular basis. While flexible with time management, we do insist that holidays are taken and encourage setting aside one day of prayer and study per month, and that a retreat or festival are built in to yearly plans.

In conjunction with the incumbent, who will split their duties between Rowlands Castle and the benefice of Blendworth, Chalton and Idsworth, we are also seeking a House for Duty candidate whose duties will be shared across these four parishes, plus Catherington and Clanfield.

- An encourager of prayer, evangelism and the sensitive development of spiritual gifts
- A person with a pastoral and spiritual concern and sensitivity to the needs of the varied age range, from the elderly to the children being nurtured in the Young Church
- Gifted at relating to young families and children, in particular maintaining close relationships with the school and supporting the young church leaders in their work
- An activist with a heart for the poor, the homeless and the disadvantaged

and we would welcome help to achieve that balance, while recognising that at any one time there may need to be an emphasis on one or the other.

We very much look forward to hearing from you if you feel called by God to this parish because you recognise some of the qualities described above in yourself, you share our passions and are keen to work alongside others who are committed to seeing God's kingdom grow.

*“This is a brilliant church with loads of gifts and ministries and I am really looking forward to the church growing and every member of the ministry growing and developing further and being blessed by our new leader”*

Church Member

# Working together

## Working together with the Parishes of Blendworth, Chalton & Idsworth and Catherington & Clanfield

The churchwardens of the six parishes, with guidance from their PCCs, have worked with the Area Deans and Diocesan Mission Development Officer to look at possible ways in which the parishes would be open to exploring working together with their new clergy team when in post. The following list has been agreed as a good start in thinking about what shared ministry could look like across four different areas:

### *Shared Mission Opportunities*

- A co-ordinated approach to schools work
- A marriage preparation programme
- Marriage enrichment courses
- Baptism preparation
- Confirmation classes
- The joining of young people together at times to form a critical mass
- A co-ordinated approach to welcoming people moving into new housing estates
- Sharing Messy Church expertise
- Joint enquirers/discipleship courses such as Alpha/Christianity Explored/Emmaus
- Generally sharing good practice in mission and learning with each other

### *Shared Admin and Operations Opportunities*

- BCI are already coordinated as one administratively. We will need to look longer term as to how Rowlands Castle could fit with this system
- Openness to exploring an appropriate centralised administrative base for shared working
- Could there be greater collaboration with resourcing funerals?

### *Shared Worship Opportunities*

- Working together to ensure a sensible and varied choice of worship style across the 6 parishes
- Look at weekday service provision together
- Licensing the new clergy team across the parishes and extending the invitation to all other current licensed ministers and readers to be licensed across the parishes should they desire. This will lead to greater liaison regarding resources in this area
- Combined evening praise services
- This year we have a joint Ascension Day service and hope to attend the Thy Kingdom Come event at Portchester Castle on Pentecost Sunday 9 June together

### *Shared Pastoral Opportunities*

- Extending the bereavement listening programme
- Extension of the 'Here to listen' pastoral group and phone line
- Home Communion
- Care homes – sharing good practice, plotting our presence and praying together for this ministry
- Joint Lent courses

The parishes and the diocese would be looking for the successful applicants to work together to continue this process of developing the shared ministry that has already started to grow. The Area Deans and Mission Development Officer would be available to support in this process should that be helpful.

# St John's today...

*The Spirit of the Lord is on me, because he has anointed me to proclaim good news to the poor. He has sent me to proclaim freedom for the prisoners and recovery of sight to the blind, to set the oppressed free, and to proclaim the year of the Lord's favour.*

Luke 4:18-19



There have been many changes in St John's over the past thirty years or so. The incumbents during this period recognised the need for change, in order to see a growth in both membership and maturity. Each of the three incumbents in that period has had a different emphasis which has made us what we are today as a church family. An initial foundation on a declaration of the Gospel message, the proclamation of the Lordship of Christ, greater openness to the work of the Holy Spirit and Biblical teaching about the Christian faith have been formative. More recently, an awareness that the Kingdom of God also needs to be grown through loving action in the community has come to the fore. Our aim is that the four streams of evangelism, pastoral care, discipleship, and social action can all be further developed in a complementary and balanced way, while maintaining our focus on the reason for our being – as worshipping believers.

## Outreach

We believe that God has called us to share the Good News of Jesus Christ to all people. We strive to be an outward-looking church, always looking for opportunities to move beyond the walls.

## Fellowship and Pastoral Care

We believe in the Body of Christ, that together we are united in Him. Therefore we learn, play, laugh and weep together. When one of us is hurt, we all suffer. When one of us is joyful, we all celebrate. We strive to be better listeners than speakers.



## Worship

We believe we were created to worship God in spirit and in truth. Not just in church services, but in all we do – at work, in our homes, in our community.



## Service

We believe that we should not only serve each other, but also care for our community and beyond through sacrificial servanthood and giving of ourselves – time, resources and money.

## Discipleship

We believe that discipleship happens best in small groups but that biblical teaching forms the context. Therefore we meet in homegroups to seek God, study the bible, pray, support each other and have fun together.

# Our prayers for the future

## *Some Challenges for the Future*

We pray that:

- Members of the church family will continue to grow in spiritual maturity and in their love of Jesus Christ. This will be helped by the fellowship and teaching within the home groups as well as biblical teaching in the Sunday services. We will continue to establish and grow Prayer Ministry as well as encouraging each other to develop our prayer lives individually and corporately as we seek the Lord's guidance and deepen our relationships with Him. We pray that the person appointed will help in these endeavours through enthusiasm, teaching and demonstration of the love of Christ
- The church family will have a greater impact on the local community through outreach and pastoral care. We hope to increasingly reach out to the community with activities such as Christianity Explored and Here to Listen. We also hope to develop a ministry of befriending isolated and lonely folk in local care homes. We will strengthen our links with St John's School and we will find new ways to reach out to the young people of the area
- We will continue to develop our Mission Possible initiative, bringing hope and the love of Christ to the poor, the homeless, the hungry and the disadvantaged.

*May our Lord Jesus Christ himself and God our Father, who loved us and by his grace gave us eternal encouragement and good hope, encourage your hearts and strengthen you in every good deed and word.*

2 Thessalonians 2:16-17



# Go and make disciples...

We want to disciple everyone who joins us in an atmosphere of love, prayer and bible teaching to encourage each other to follow and become more like Jesus day by day, whether they have just started their journey of faith, or have been a believer all their lives. We want to see that faith and knowledge are grounded in Kingdom-building actions and activities.

## *Home-groups*

There are currently four home-groups meeting weekly - one in the afternoon and the others on various evenings. Approximately 50 people attend these groups and the size averages 10 to 12. The format of each varies but typically includes fellowship, worship, bible study and prayer. Material for teaching is chosen by each group in consultation with the home group co-ordinators. There are regular meetings with the group leaders.

In addition, there is an occasional Study Group that addresses themes, including films, Bible Book Club and teaching from various events. This is designed for people who may not wish to be part of longer-term home-groups but can commit to shorter blocks of 4-6 weeks.

## *Lent course*

The whole church family also comes together from time to time to study particular subjects. This Lent has seen 40-50 folk meeting over 5 evenings looking at Jesus the Storm-breaker, how our faith can sustain us through all the storms of life.

## *Library*

There is a comprehensive library available for the congregation at the back of the church, including study guides, theology, bible notes, biographies and books focussing, for example, on Advent and Lent. Books are available for loan after the services and there is also a stock of bible study resources available for home group use or private study.

## *Further afield*

We encourage our people to be fed and led through local and nationally organised courses and events. This April has seen 18 of us at Spring Harvest, as well as a group going to the Big Church Day Out in May. We encourage Quiet Days and Retreats as well as prayer and fasting for specific purposes. We currently have 4 people embarked on a Ministry Training Course (MTC) run by the Sussex Gospel Partnership, which seeks to enrich the student's spiritual life through in depth Bible study, understanding of some important theological topics, church history, matters of doctrine and training in skills required to teach scripture and lead group studies. It is a two year course but the first year can be done over a two year period by simply attending a monthly Saturday morning, currently running in Chichester.



*"Finding an opportunity to participate in sustained, in depth and applied Scripture study, taught by skilled and knowledgeable teachers has been like finding a pot of gold!"*

*MTC student*





# Fellowship and Pastoral Care

## *Prayer Activity*

The church seeks to make prayer a regular and important part of its life. A regular prayer meeting takes place every Monday evening in the Church Centre.

Prayer is also a vital ingredient of the weekly home group meetings. In addition, for the past 18 months we have held a dedicated weekly prayer meeting for our Mission Possible initiative.

## *Minkies*

A team of volunteers, known as the Minkies (Ministry in the Kitchen), provides catering services for both Church and private events using the extensive facilities of the Church Centre.

## *The Prayer Ministry Team*

A small team has been available to pray with anyone requiring ministry. This has been a popular resource and members of the team have been available in the sanctuary at the conclusion of 10am services to pray, in pairs, with those in need. The sanctuary provides a place of privacy and seclusion for this. In 2017, in order to grow and refresh the team, 10 members of the congregation attended training provided by the Diocese called 'Growing a Healing Ministry' which was designed by the Acorn Healing Foundation. We have recently appointed two Prayer Ministry Leaders to re-launch the service in the coming months.



## *Baptism Preparation*

A small team meets with the families of baptism candidates before the ceremony and then continues to provide pastoral care afterwards.



## *Women's Fellowship*

This has a membership of about 15, mainly elderly but fairly active ladies, and meets twice a month on Tuesday afternoons. The meetings are generally social in nature with talks, demonstrations or discussions and always commencing with a hymn.



## *Beechwood*

One of our Readers visits the Care Home in Rowlands Castle regularly for pastoral care and to take Communion.

## *Relationship with other Churches*

The other church in the parish is the Church-on-the-Green, a United Reformed Church. We have a good relationship with the Pastor. Joint events do take place from time to time, particularly at Easter.

We also have links with Churches Together in Havant and church members take an active part in the production of the Havant Passion Play performances.



# Outreach

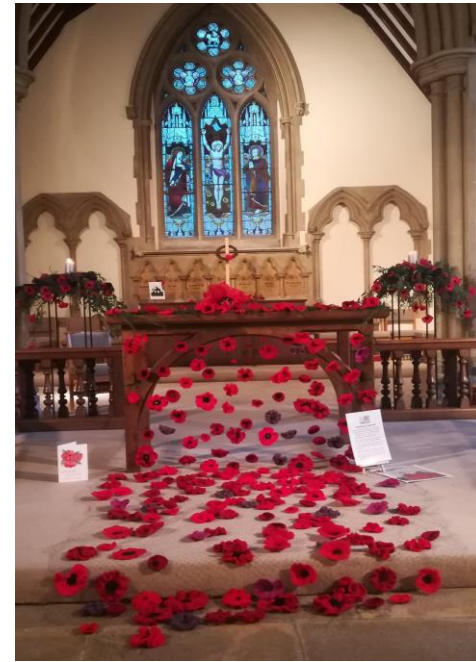
Many initiatives have been taken to reach out to the wider community including; Carols at the pub; entertainment and outreach at the July Village Fair; as well as open events such as concerts, quizzes and curry evenings. At Easter we hold an open-air service of communion on the village green.

## *Little Fishes*

For several years, we have run a weekly Monday morning "Blue Moon" Café for mums and young toddlers. In September this was re-launched as Little Fishes Playtime to include structured play, Bible stories and songs and is proving very popular. In March we ran our inaugural *Who let The Dads Out?* to give the dads and grandads an opportunity to experience the Little Fishes format, spend time with their under 5s, eat bacon rolls and give mums a free morning.

## *Christianity Explored*

Having successfully run many Alpha courses in the past, last Autumn saw the start of a Christianity Explored course. Over 40 people attended of which about 12 were on the fringe or completely unchurched. We hope this will be a major tool in the future growth of the church in both numbers and spiritual depth.



*"An incredibly moving and thought-provoking exhibition in memory of those who died in WW1"*

Exhibition Visitor



## *WW1*

There is a very dedicated team of flower arrangers who use their skill to ensure that flowers are regularly displayed in church. Christmas and Harvest are really busy times with the church full of different floral displays. The church is specially decorated for Christmas and Harvest celebrations with multiple arrangements. In November as part of the WW1 anniversary commemorations, the team decorated the church with floral tributes and related exhibits of historical village interest for two weeks which attracted over 400 visitors.



# Worship

## Sunday Services

Holy Communion using Common Worship takes place every Sunday at 8am. This is a spoken service and is usually attended by 12-16 people mainly of retirement age. Church members who regularly attend this service appreciate the traditional style of the service. There is a monthly breakfast in between the 8am and 10am services which is supported by members of both congregations.

The Main Service at 10am varies in format but is typically informal in style. Robes are not typically worn. This service can last up to 1½ hours with up to half an hour for the sermon and an extended time of worship. The average attendance is around 40-50 adults and 10 or more children. Coffee is available after the service.

Lay members of the congregation assist with the chalice at Communion as well as lesson reading and intercessions. A dedicated Welcoming Team is in place at every 10am service and the team of sidesmen do a similar role at 8am.

Home Communion visits to the house-bound or ill are undertaken by a number of lay couples who have been licensed by the Bishop to offer this ministry.

A Reader also takes communion to Beechwood House (a residential care facility) and to the Spire Hospital if required.

Baptism services take place, usually either during the morning service or immediately following at 12:30.

Occasional services, including Cafe Church, Messy Church and on occasion Baptisms, using the full-immersion baptistry, are held within the Church Centre.

Mothering Sunday, Harvest and Christingle services are held annually and the school are invited to join us and take an active part in the service.

## Music

Music is important to the church and the style reflects the type of service. For the main 10am Sunday service the music is led by the worship team and is typically modern and informal in style. This team, consisting of about a dozen people in total, sing and play various instruments including keyboard, guitars, violin, flute and percussion. The organ is played at some formal services, weddings and funerals.



## Pattern of Services

<b>Sunday</b>	
<b>8.00am</b>	Holy Communion
<b>10.00am</b>	
1 <sup>st</sup> Sunday	All Age service
2 <sup>nd</sup> Sunday	Morning Worship
3 <sup>rd</sup> Sunday	Holy Communion
4 <sup>th</sup> Sunday	Morning Worship
5 <sup>th</sup> Sunday	Holy Communion
<b>Wednesday</b>	
<b>10.00am</b>	Holy Communion

## Occasional Services

<b>In 2018:</b>	
<b>Marriages</b>	<b>6</b>
<b>Baptisms</b>	<b>20</b>
<b>Funerals conducted</b>	
- at church	<b>12</b>
- at crematorium	<b>2</b>
<b>Burial of Ashes</b>	<b>13</b>



## ***Mission Possible***

In 2016, we began a journey which became known as Mission Possible, to explore the idea of providing a home either for several individual local homeless folk or a family of refugees. We have worked with two charities called Hope Into Action and the Rural Refugee Network and in October 2017, by pooling savings, 13 investors within the church family bought a 3 bedroomed house locally. Teams of volunteers from St John's then refurbished and furnished the house and in January 2018 a refugee family (Mum and 4 children), chosen by the UNHCR, arrived at their new home. Another team of 8 volunteers provide support on a regular basis with English language practice, help with homework, fun activities and trips. We are currently praying about next steps in Mission Possible.

## ***'Poor wanderers'***

In recent years, the Lord has sent us a number of homeless folk who need time, space, love and acceptance to start the journey of getting their lives back on track. While they may stay for some months around the church, we have helped with food, equipment, access to showers, assistance with accessing the 'system' (health, social services, housing) and simply spending time with them. We have now helped two such folk find accommodation locally and they stay in contact and volunteer (unasked!) to help out with churchyard maintenance or other tasks around the church.

## ***In the community***

As a church family we regularly collect and deliver food to a local Food Bank and two members volunteer there on a weekly basis. There are many who also do local volunteer work in the community for example at Good Neighbours, the Rowans Hospice, RVS Lunch Club, the chaplaincy team at Queen Alexandra Hospital and Christian Youth Enterprises (sailing and activity centre).

## ***Here To Listen***

The 'Here To Listen' service is also part of the wider Pastoral Care ministry of St John's and is for anyone in need of a "listening ear". A team of 20 trained volunteers is available for this ministry with calls on the dedicated confidential telephone going initially via the Church office and then being directed to the member of the team on duty that week. Then, contact is made with the person to arrange a visit or meetings with those in need.

*Is this not the kind of fasting I have chosen: to loose the chains of injustice, and untie the cords of the yoke, to set the oppressed free and break every yoke. Is it not to share your food with the hungry and to provide the poor wanderer with shelter.*

Isaiah 58:6-7



# Our work with young people...

## *Young Church*

The number of children attending church regularly has been rising gradually over the last few years after a previous decline. At present the children's ages range from 6 months to 16 years. Young Church sessions are run in the Church Centre during the 10.00 a.m. service every Sunday during term-time, except for the first Sunday of the month when the children remain in church for an All Age Service. We also run a crèche as required. We currently have around 20 children registered.

For the last few years the Young Church leaders and children have played key parts in running the All Age Services at the beginning of the month including, dramas, quizzes, readings, songs.

## *Messy Services*

We are into our fifth year of Messy Church services – currently running at least two each year. We typically run them at Christingle, Palm Sunday and Harvest although this year we experimented with Messy Mothering Sunday. We typically get 30-50 children plus family members who enjoy crafts related to the occasion in the Church Centre, followed by a short interactive service in church and then lunch or refreshments back in the Church Centre. Most of the church family are involved in craft preparation, refreshments, hosting the day or the service itself.

## *Our relationship with St John's School*

St John's Primary School is a Church of England State-Controlled School for which the church currently provides three Foundation (Incumbent plus two others) and two other Governors. We currently have a team of six people to provide a morning Assembly every 2 weeks using the Bible Society's 'Open the Book' material. One of our Readers is acting in a key liaison and pastoral role to the school during the interregnum. The school also regularly use the church for occasional services and class activities in support of the curriculum. We see our relationship with the school as a vital means of service and outreach and consider it an area of significant potential growth.



# Generosity

## Giving

The PCC allocates a tithe (10%) of all direct gifts, offerings and covenants given to St John's for the support of predominantly Christian workers and projects outside the parish. There is a small committee which meets annually to consider requests for financial aid and the members aim to spread the gifts between local, national and international needs. The incumbent also holds a small discretionary fund to assist with emergencies in the parish. We also regularly invite speakers from our supported charities and we often host Tear Fund Sundays with a Hunger Brunch to raise funds for their work.

Each of the charities is assigned a 'champion' from the congregation and they promote or provide an update on their charity on a rotational basis as 'Charity of the Month'



Kome, Tanzania



Hope Into Action Conference 2019

Two Saints	St.Lukes Healthcare (Clergy)
Barnabas Fund	Toybox
Emmanuel International	Church Homeless Trust
Beacon Food Bank	Hope into Action
Release International	Mission Aviation Fellowship
Medaille Trust	Quicken Trust
Sovereign World Trust	

# Governance

## ***The PCC and Administration***

The Parochial Church Council consists of the Incumbent, Readers, Churchwardens, two deanery synod members and 9 other elected members. The PCC normally meets about 6 times each year. The APCM is usually held on a Sunday in April after a shortened morning service. The Standing Committee, consisting of the incumbent; churchwardens; treasurer and two PCC members (one of whom represents the Readers), meets as required.

## ***Church Staff***

The Church employs a part-time administrator for a total of four mornings a week. In addition to undertaking secretarial and administration duties and church centre bookings, she also acts as Parish clerk (for Baptisms, Weddings and Funerals), and as PCC Secretary.

There are five Readers who share leading and preaching in the services and help with pastoral care. In addition to this there are many people in the church who willingly serve in many different capacities such as the Pastoral Team, Welcoming Team, Prayer Ministry Team, Homegroup coordination, Fabric and Maintenance. We actively encourage the use of God-given talents and gifts and strive to be a church where every member ministry is a reality.

## **Church Website**

The church operates a website ([www.saintjohnschurch.org.uk](http://www.saintjohnschurch.org.uk)) which provides information on the life of St John's Church in the community of Rowlands Castle, as well as recordings of recent sermons, available for download.



# Finance and Stewardship

## Church Finance

In 2018 we received general funds of £88,069 with £70,729 from regular giving and fund raising with, £9,037 from Hall lettings and £6,285 from fees.

As of 31/12/2018 we hold reserves of £23,602 in our unrestricted funds in line with Charity Commission guidelines of 3 months' expenditure. In addition we have restricted funds of £14,056 spread across several funds for supporting education of local children, baptismal families, "Mission Possible" (supporting a refugee family), and building repairs.

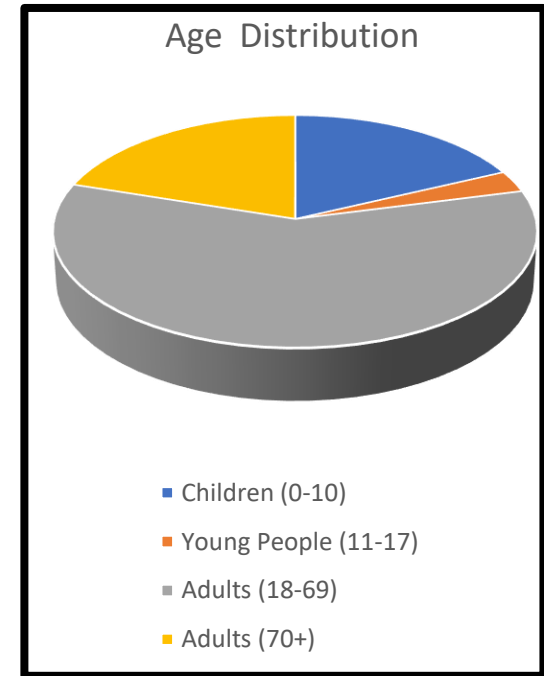
We had a small deficit of income vs expense in 2018 and we have some issues with the fabric of our church buildings identified in our recent quinquennial - the most urgent of which will be addressed during 2019. The cost of these immediate works will be offset by grants recently received from the local Development Fund disbursed by the local council, which total some £23,000 so will not affect our reserves significantly.

The financing of the Parish is by design conservative with no external debt. The PCC policy is not to apply for lottery finance and typically fundraising for specific projects is done within the congregation rather than general appeals to the village at large. We do expect to be focusing on stewardship and giving in a sermon series in May this year and hope to encourage members to join the wider Parish Giving Scheme which will help spread the income and alleviate the administration of Gift Aid, as well as encouraging annual reviews of giving amounts for individuals.

Our Parish Share was £46,055 in 2018 and has been paid in full every year. The Staff Budget for our Parish Administrator and associated expense is c£10,000.

As mentioned previously, 10% of our unrestricted income is given away by the PCC each year. In 2018 this amounted to £7,250.

All clergy and other ministry expenses are paid in full.



Electoral Roll 2019 = 84



# Buildings and Facilities

## *The Church and Churchyard*

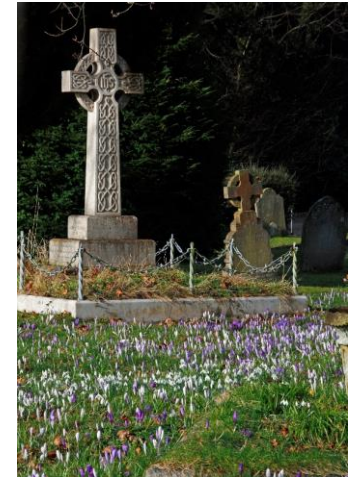
The foundation stone of St John's Church was laid in the year Queen Victoria came to the throne, 1837. It has been extended twice, first in 1853 and again in 1929 when the nave was extended. It is a traditional cruciform design built in flint and brick. In 2009 the old pews were replaced by chairs throughout the church, giving much more comfort and flexibility.

St John's is a popular venue for weddings.

The churchyard is currently open for both burials and interment of ashes.



'StreetView' of  
St John's interior



# Buildings and Facilities

## ***The Church Centre***

The 1926 church hall was replaced in 2001. The current centre consists of a large hall which can hold 120 seated; a small side hall capable of seating 60 persons; and an upper room of 20-25 seated capacity. The centre has a modern well fitted kitchen, toilet facilities including disabled facilities and an office for the parish administrator. There is a full-immersion baptistry under the stage at the front of the main hall.

As well as for church activities, the church centre is regularly used by local organisations such as the Bridge Club, Pilates, Baton Twirlers, Line Dancing and Egyptian Dancing. It is also used to hold conference and training events by organisations including Community First, East Hampshire District Council, Portsmouth Diocese and NHS. It is also regularly hired out for parties, wedding receptions, baptism celebrations and funeral teas.

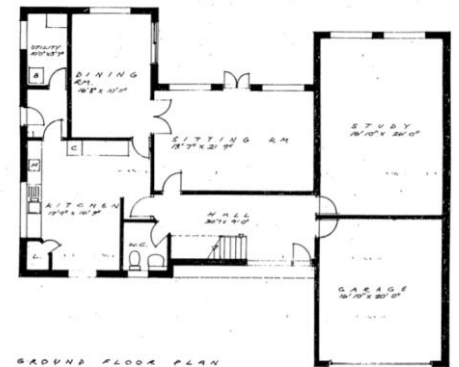
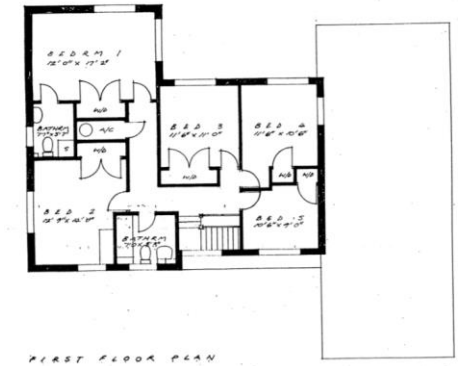
More details can be found on the St John's web site at [www.saintjohnschurch.org.uk](http://www.saintjohnschurch.org.uk)



# The Rectory in Rowlands Castle

The Rectory in Rowlands Castle will house the incumbent who will be shared between Rowlands Castle and the benefice of Blendworth, Chalton and Idsworth, while the Blendworth Parsonage (see next page) will be the residence for the House for Duty post which will be shared across these four parishes plus Catherington and Clanfield.

The Rectory is a detached house built about 50 years ago, in a central position in the village. It is just a short walk from the church and is very suitable for a family. There are five bedrooms, one of which has an en suite shower-room. The house has a family bathroom, two reception rooms and a large study and meeting room. There is a double garage and a pleasant secluded garden. The kitchen is well fitted and there is an adjacent utility room.



9 College Close, Rowlands Castle, Hampshire PO9 6AJ

# The Parsonage in Blendworth

For a new member of the ministry team taking up the House for Duty post across the six churches there is a modern detached residence available at 6 Idsworth Close, Horndean PO8 0DW. Adapted to allow visitors on church business to be welcomed without the requirement to access the house directly, this property is close to open countryside and local amenities, including schools.



6 Idsworth Close, Horndean,  
Hampshire, PO8 0DW

# Rowlands Castle and the local area

Rowlands Castle is a village of about 3,000 people situated in the south east corner of Hampshire. It is some three miles north of Havant and Emsworth. Portsmouth is about ten miles away to the south west, Chichester lies a similar distance to the east and Petersfield seven miles to the north. To the south, the interesting coastline of Langstone and Chichester harbours are easily accessible as are the hills of the South Downs National Park a few miles to the north. It is on the main railway line from London to Portsmouth.

The majority of the land within the parish boundary is woodland or farmland. The housing in the village ranges from large detached houses to small terraced properties and flats, with some council and housing association properties, providing homes for a cross section of society. Current development on three sites within the Parish will provide just under 200 new homes, and there are plans to develop some 800 new homes within two miles of the village, of which 150 will be within Rowlands Castle Parish boundary. In the centre of the village is the Green, where you will find a Post Office (located in the Home Hardware store); a Lonsis Supermarket; GP Surgery and Pharmacy; a vehicle service and repair garage; tearoom; three public houses; veterinary practice; estate agent and the Church-on-the-Green (URC). There is also a Village Hall, Recreation Ground and Golf Club.

The village is blessed with many organisations catering for a wide range of interests. U3A is very active and each July there is a very popular Village Fair on the Green in which the church participates. The tennis, golf, cricket and football clubs are thriving.

There is a village web site ([www.rowlandscastle.com](http://www.rowlandscastle.com)) providing a comprehensive view of activities and interests in the area. The Village Fair, local businesses and a list of places for walks and recreation are also covered. There is a Parish Council and the local authority is the East Hampshire District Council. The parliamentary constituency is Meon Valley. The MP is George Hollingbery.



# Parish Contacts

If you are inspired to pursue this ministry opportunity at Rowlands Castle and need further information or have questions, you are welcome to contact any of the following people.

## Lay representatives

Graham Mitchell

[anagram31@btinternet.com](mailto:anagram31@btinternet.com)

Terry Monahan

[terry.monahan1@gmail.com](mailto:terry.monahan1@gmail.com)

## Churchwardens

Pam Ewing

[pam.ewing64@gmail.com](mailto:pam.ewing64@gmail.com)

Terry Monahan

[terry.monahan1@gmail.com](mailto:terry.monahan1@gmail.com)

## St John's Parish Office

Gill Whatley

[admin@saintjohnchurch.org.uk](mailto:admin@saintjohnchurch.org.uk)

## Area Deans

Revd Canon Karina Green

[canonkarina@talktalk.net](mailto:canonkarina@talktalk.net)

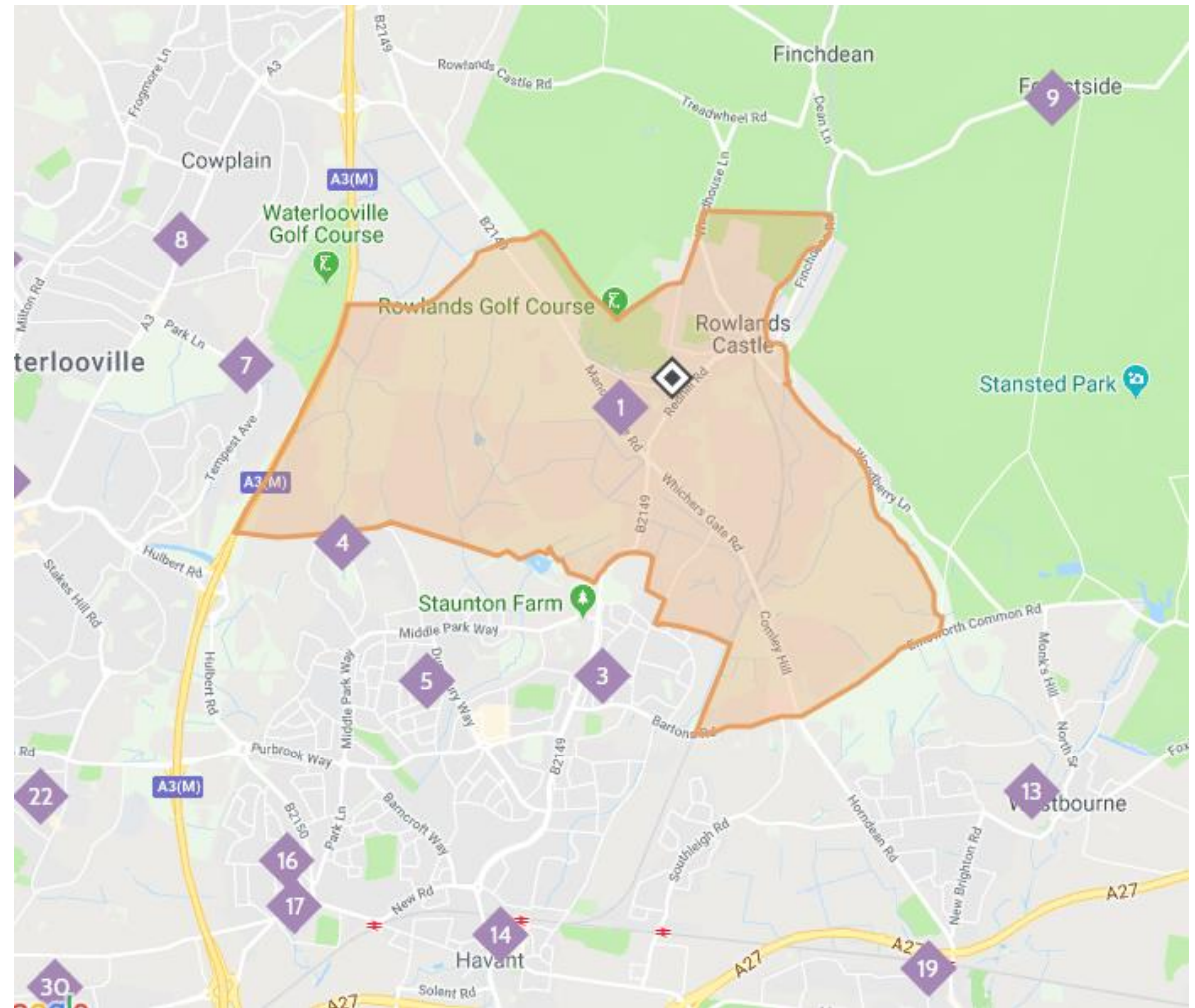
Revd Ian Snares

[iansnares@gmail.com](mailto:iansnares@gmail.com)

## Archdeacon of Portsdown

The Venerable Dr Joanne Grenfell

[Joanne.Grenfell@portsmouth.anglican.org](mailto:Joanne.Grenfell@portsmouth.anglican.org)



Taken from 'A Church Near You'. St John's is #1