

Newport, Carisbrooke and Gatcombe

PARISH PROFILE



NEWPORT MINSTER IN THE HEART OF THE ISLAND

BISHOP'S WELCOME

I am delighted you are exploring whether the Holy Spirit is nudging you in the direction of the post of Team Rector for the parish of Newport and Carisbrooke with Gatcombe. Be assured of our prayers in the diocese for you and those you love as you step into a time of discerning.

The Diocese of Portsmouth is in good heart and together we have heard God's call to Live, Pray and Serve the Kingdom of Christ, in and for the world.

If you sense the good Lord is calling you to join in with this beautiful work of retrieval and love we will be ready to receive you – all that you bring – in the days ahead.

With my prayers and blessing,

+Jonathan Portsmouth



**THE RT REV JONATHAN FROST,
BISHOP OF PORTSMOUTH**



IMAGES FROM OUR DIOCESE'S PARISHES AND CHURCH SCHOOLS

INTRODUCTION TO THE DIOCESE



The Diocese of Portsmouth stretches across south-east Hampshire and includes the whole of the Isle of Wight. It includes 139 parishes, from Botley in the west to Emsworth in the east, and from Blackmoor in the north to Ventnor on south side of the Isle of Wight. It includes diverse communities, ranging from the densely populated and relatively deprived parts of inner-city Portsmouth, to rural villages in Hampshire; and from a range of seaside towns on the Isle of Wight to suburban communities west of Fareham and Gosport. In total, it covers 420 square miles and has a population of 784,000.

The Diocese of Portsmouth has 170 churches, ranging from historic listed buildings to brand new, purpose-built churches. There are around 150 clergy serving in those churches and their parishes, around 50 of whom are self-supporting. There are also around 70 licensed lay ministers who help with leading services and pastoral work. Around 13,500 people regularly worship in our churches, on Sundays and during the week. Attendance numbers have been declining over the past 10 years, but there are particular congregations that have grown. Only a tiny number of churches have been closed in recent years.

Parishes and chaplaincies within the diocese are supported by a small diocesan team, based in Peninsular House, Portsmouth. These officers support parishes and church schools, administer clergy housing and stipends, manage its property portfolio, promote social justice, handle communications, manage safeguarding procedures, and run a variety of training courses. The Diocesan Secretary oversees these staff. Separate teams of staff are employed in the bishop's office and for the three archdeacons. There is no suffragan bishop.

The diocese includes 41 Church of England schools in south-east Hampshire and the Isle of Wight. These are still mostly schools funded by the local authority, but the diocese supports them with regard to governance and admissions, building projects, Christian ethos, RE and recruitment of headteachers. The education team supports schools across both Portsmouth

and Winchester dioceses, under the authority of a Joint Board of Education. Two schools on the Isle of Wight are joint Church of England/Roman Catholic schools.



Bishop Jonathan Frost was installed in March 2022, and has shared his vision for the diocese - a place where all are invited into a life-enhancing encounter with Jesus Christ. It should be a place where children, young people and young adults are given a particular priority; and where ministry to the elderly is supported by a network of Anna Chaplains, working in every locality. The vision is encapsulated by a vocational call to all Christians,

entitled **Live | Pray | Serve**, which has been supported by strategic funding from the national Church of England to promote the planting of new congregations and a network of pioneer ministers. You can read more about our vision and vocation at portsmouth.anglican.org/liveprayserve.

The Diocese of Portsmouth is one of the smallest dioceses in the Church of England, but has often “punched above its weight”, with senior staff and diocesan officers involved in the national Church, managing joint projects or implementing innovative ideas. Financially, the payment of parish share has always been good – but the recent Covid pandemic has resulted in some financial challenges.

There is a range of churchmanship across all traditions within the diocese, few parishes deliberately exclude themselves from deanery and diocesan initiatives, and our smaller, family feel means that most clergy and lay leaders know and respect each other.



ARCHDEACON'S INTRODUCTION

We are learning together in our various parishes, communities and places how to make Christ's love visible and real. Over the last few years we have been working on our Deanery Plans. In taking up the post of Team Rector in the recently formed Parish of Newport and Carisbrooke with Gatcombe, you would play a valuable part in the Isle of Wight Deanery Plan.

You will find this in the parish profile and role description; having said that your arrival would change our world. What you bring to the Isle of Wight Deanery will be exactly what we need to embrace, to receive and to learn from.

This is an exciting time for the Isle of Wight and in the life of the parish of Newport and Carisbrooke with Gatcombe. You will see from the profile that these churches are enthusiastic about working together to demonstrate the love of God in their local communities.

This recently formed team are keen to use the distinctive gifts and skills of all their members, with a range of specialist ministries. We are seeking a visionary leader to inspire and enable this team to thrive. If you'd like to know more why not view our short video introduction at portsmouth.anglican.org/newport.

Please be assured of my prayers as you discern whether you are the person the Holy Spirit is calling to join us in this next exciting stage of mission and ministry on our beautiful Island.



**THE REV ALLIE KERR, ACTING
ARCHDEACON OF THE ISLE OF WIGHT**



OUR TEAM RECTOR

The parish of Newport and Carisbrooke with Gatcombe is and aspires to be the heart of the Island. From market town to rural landscape the parish encompasses a diverse range of heritage, community and cultural riches.

We are a parish that believe strongly in working collaboratively across our communities and congregations, with a missional plan to provide deeper engagement with our wider community. The Island life gives for a wonderful and unique work-life balance with some of the most beautiful beaches and quiet countryside all within a short range. Our county motto proclaims 'All this beauty is of God.'

Whilst the job description outlines the role of the Team Rector and the qualities essential to this role within our parish, we believe that the most important element is for you to have a true love for (or call to) the Island, its people and communities, and a real love of God.

We are looking for someone who is visionary, strategic in their approach, a strong team player and therefore strives for strong collaborative relationships across our parish and the wider community.

A lot goes on within the parish and so it is essential for the successful candidate to be an enabler and a delegator, someone able to take a step back and allow and empower others to take on roles and responsibilities, helping them grow and to allow our parish to flourish.



ABOUT THE PARISH

The Parish of Newport and Carisbrooke with Gatcombe was formed in June 2020, uniting the parishes of Newport Minster, Newport St John and St Mary's Carisbrooke with St Nicholas in Castro. St Olave's Gatcombe is currently in plurality with the parish of Newport and Carisbrooke. However, St Olave's works closely with the other churches and hopes to join the parish formally in the future.

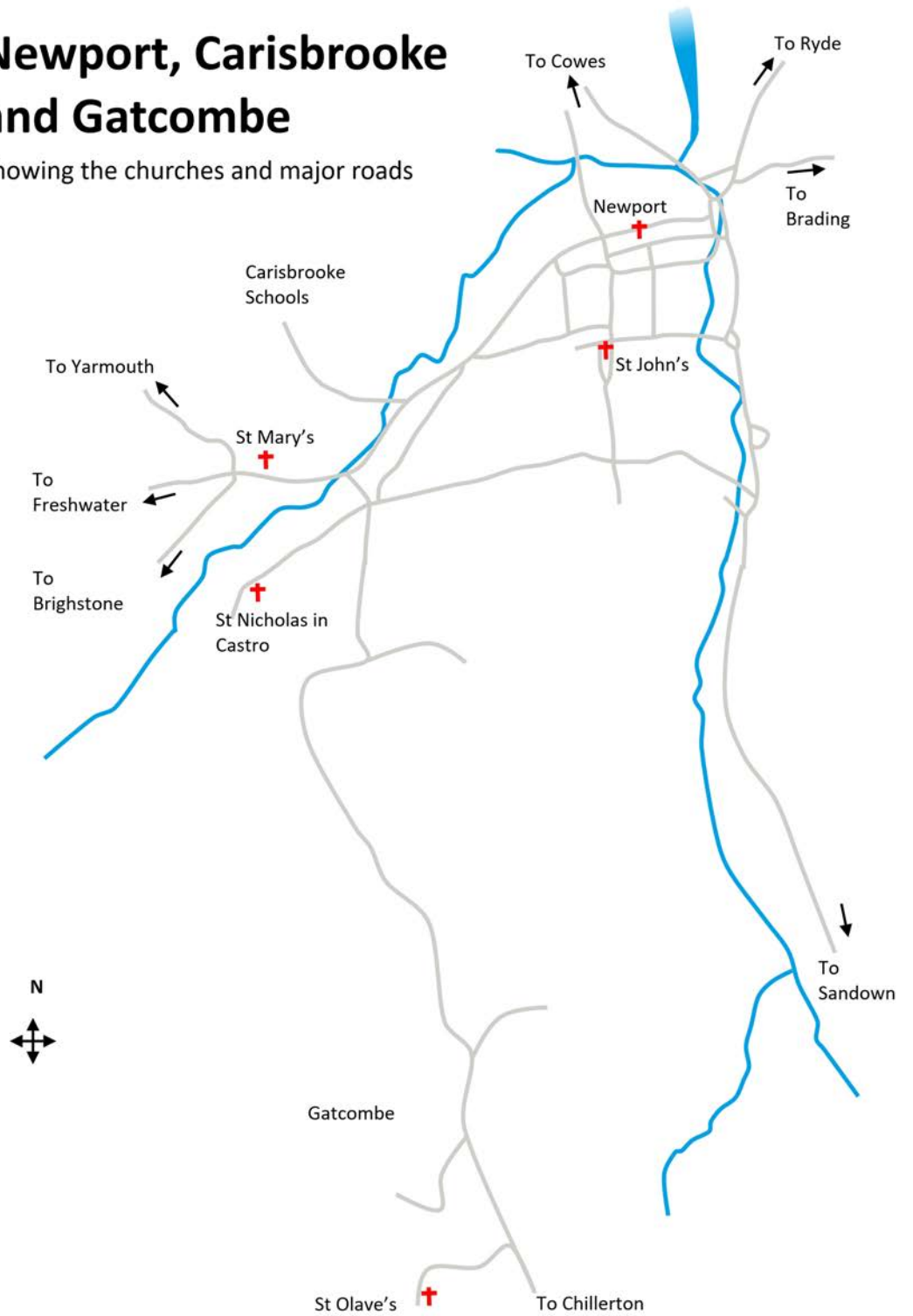
The parish has a population of approximately 25,000, the Island itself having a population of 142,000. The rural part of the parish, to the west and south, gives the area its unique setting, with rolling chalk downland, isolated farms, and a compact area of forestry. The urban part of the parish is wedged between this and the tidal section of the River Medina.

The population of the parish is overwhelmingly white British, but has greater diversity than many communities on the Island. Ward profiles indicate higher than average levels of deprivation in some areas, particularly around Newport.



Newport, Carisbrooke and Gatcombe

Showing the churches and major roads



Within the parish are some of the largest employers on the Island, including HM Prison Isle of Wight, the Isle of Wight Council and the Isle of Wight NHS Trust, based at St Mary's Hospital, Gurit (UK) and Vestas. Retail is important, bringing many into the area, and is focused both in the town centre and in pockets around the edge of the built up area, although this has been hit hard by the Covid pandemic and there are now a number of empty retail units.

The parish is also notable for the number of schools and colleges it contains, including three secondary schools/sixth form colleges and the Isle of Wight College, as well as five primary schools. We hope to continue to develop our good relationships with and mission into these settings.

Tourism is hugely important to the Island, particularly in the warmer months. We are rightly proud of our location, boasting the best of both coast and country, incorporating the stunning beaches of the Island with the quieter countryside.

Living on the Island gives huge opportunity to be a part of rich cultural experiences with a diverse and eclectic mix of encounters on offer. With Newport being right at the centre of it all, you're never far from opportunity and excitement. The central location also means that the new parish has an unrivalled opportunity to host gatherings of Christians from across the Island in a convenient and accessible location.





MEMBERS OF THE CONGREGATIONS

ABOUT THE CHURCH

The parish offers a range of Sunday and midweek services, some of these also being accessible online. The liturgical year is observed as part of this, with many additional and special services, such as, Christmas, Holy Week and Easter. The traditions across the parish as a whole is described as ‘middle of the road’ from liberal modern catholic to liberal evangelical.

The table shows the regular Sunday worship patterns across the parish:

	8am St Mary's	9:30am St Mary's	9:30am St John's	11am Newport Minster	11am St Olave's	6:30pm St Olave's
WEEK 1		Holy Communion	Holy Communion and Junior Church	Holy Communion	Holy Communion	
WEEK 2	Order 1 Holy Communion	Holy Communion	All-Age	Holy Communion	Service of the Word	
WEEK 3		Holy Communion	Holy Communion and Junior Church	Holy Communion		Evensong
WEEK 4	Order 1 Holy Communion	Holy Communion	Service of the Word	Holy Communion	Holy Communion	
WEEK 5		Joint Holy Communion Service				

In addition to the service pattern above, Newport Minster, once per month has a 6:30pm lay-led candle lit Taizé service. Due to its size and location, the Minster is the civic church on the island and therefore hosts significant public and civic services and events, such as, Remembrance, Law Society and other ad-hoc services. The best attended of these is the Remembrance Sunday service with over 600 attendees. Sunday services and civic services are also live-streamed.



At St John's morning services include All-Age Worship, Holy Communion, and Service of the Word. Other styles of service are also sometimes offered in the main 9:30am service e.g. café church. Junior Church meet fortnightly in term-time, led by the Junior Church team. Sunday services are also live-streamed via social media. On Wednesdays there is a morning service at 11am, alternating between Holy Communion or Morning Prayer.

The ministry team currently includes two Team Vicars, one with a focus on ministry with children, families and schools, and the other with a focus on engagement through pastoral offices, three Readers and a (soon to be licensed) Anna Chaplain, who lead and preach at services across the parish. The Team Rector will lead the team and, soon after appointment, will lead the recruitment of an additional Team Vicar with a focus on Church Planting and new congregations. A number of lay people across the parish serve in various roles of leading and supporting worship, such as, reading the Bible, leading intercessions, sides persons, tech team etc. Increasingly, worship has been led more collaboratively across the parish with the congregations joining together for worship.

For example, the fifth Sunday of the month is now a joint Holy Communion service and other significant services, such as Palm Sunday and Holy Week are often held jointly.

Newport Minster, St John's and St Mary's all have their own choirs affiliated to RSCM leading Sunday worship, and music has an important role in each church. St John's has 30 members, and is the largest church choir on the Island, ranging in age from 7 to 86. with a rich musical tradition. The Minster and St Mary's both have a small choir. For significant worship occasions the three choirs join together. All choirs perform concerts of sacred and secular music throughout the year.

St Nicholas-in-Castro, which is part of Carisbrooke Castle falls outside this regular pattern, hosting special services such as Palm Sunday, Remembrance Sunday, War Memorial and Christmas Carol services. There is a good link with English Heritage who manage Carisbrooke Castle. For more details see achurchnearlyou.com/church/16805/.

All four churches host services for local schools during the year or local schools come to visit the churches to learn about aspects of the Christian faith and church history. Worship is also lead by the Ministry Team within the three local CofE schools. Members of the congregation and Ministry Team are on



governing bodies of some of the local schools. There are also several home groups and prayer groups across the parish and other Bible study courses are offered throughout the year, such as, Lent courses.

Worship is offered in several care homes throughout the parish, which is supported by the Ministry Team. Home Communion is also taken to several people across the parish who are housebound.



COMMUNITY EVENTS IN CHURCH HALLS

CHURCH AND COMMUNITY



All three church halls in the parish are well used by a wide variety of church and community organisations, especially as the community around both Newport and Carisbrooke are short of other suitable venues. Users include Brownies, Guides, Rangers, Parent and Toddlers, a Memory Clinic Dementia support group, Alzheimer's support, U3A dance, music and singing groups. The halls also host an active programme of events for congregations and community. The parish centre (located close to the minster) is also used as the hub for the ministry team and staff team for the parish, with recently refurbished meeting rooms.

The minster receives some 30,000 visitors a year and is open and stewarded in the mornings (Monday to Saturday) There is a coffee shop serving tourists, coach parties, local shoppers, the homeless, the hungry and those needing other support. The social and missional aspect of this work is important.

Churches Together in Newport is a partnership of different denominations, which, though valuable, would benefit from a higher profile, both in the community and among existing congregations. There is scope for more ecumenical co-operation at the grass roots in the town as well as a strong desire to work with our neighbouring Church of England parishes.

Revive Newport is a social action charity which draws people from across the parishes and provides practical, financial, and emotional support to residents of all ages. On the southern edge of the parish, the work of Carisbrooke Priory, a house of prayer and Christian healing, is a significant presence in the community. It is a registered charity with its own board of trustees. Youth for Christ, Street Pastors and School Pastors also have a significant role in the community.

St John's hold weekly lunch clubs for older members of the community, many of whom live alone. There is also Chatterbox, a group for parents, carers and pre-school children, meeting in term-time with 25 under 5s attending.



A weekly café called Parson's Pantry is run in the church hall in Carisbrooke, which serves the local community. St Mary's Carisbrooke is open throughout the day, and its quiet atmosphere is known to be appreciated by locals and visitors alike.

St Olave's also play an active role in the community, including the annual scarecrow festival and hosting events at the local village hall in Chillerton or at St Olave's church.

Tourism brings larger numbers to St Nicholas in Castro each year, but an admission fee has to be paid to access the English Heritage site, and the information is largely framed in terms of its history and role as a war-memorial.

Charities supported across the four churches vary. A mix of overseas mission and local charities are helped including the local Foodbank, Christian Aid, CMS, and the Children's Society. A young person in Africa is also sponsored by St John's Junior Church. The annual bike ride for the Hampshire and Isle of Wight Historic Churches Trust is also supported. This year the parish are supporting Lend with Care charity through specific charity events planned throughout the year.

Among the community initiatives in Carisbrooke is the SOCKS handicraft group meeting monthly in the Eight Bells pub. This was a group formed by the church, and focused on knitting and crocheting, and has in the past run a Wool Festival based in the church and church hall.

The Friends of Carisbrooke Church, formed in 2014, has an important role in linking the church to the community. Regular fundraising through the Friends is very well supported by the local community.

Both St Mary's and St Olave's have community newsletters that are distributed to the local community. It is the main means by

which local churches offer the Christian message into homes in the community. For Newport Minster and St John's their main outreach to the local community is through their Facebook pages.

The occasional offices are important opportunities, used by all of the churches, to serve, and engage with, the local community. From July 2021 – June 2022 there have been 28 baptisms and 28 weddings across the parish and on average there are approx. 3-4 funerals per month.

St John's have trained lay pastoral assistants responding to the needs of the parish in conjunction with the Ministry team. The parish wishes to develop a stronger network and to increase its presence on the local estates. St John's has a Prayer Ministry team which offers support through a prayer chain and plan to reintroduce praying for individuals after Sunday services in the near future.

We do however face some challenges, particularly when it comes to serving our community. We unfortunately are experiencing a slow decline in numbers, this is paired with a lack of volunteers to be able to support not only our services and daily running but also our fundraising efforts and outward mission-based priorities. We are currently trying to work on a plan to increase our volunteer support base and giving with the support of the Diocese and the Diocesan Stewardship Advisor.

We set ourselves aspirational goals and want to work more in our community, creating stronger links with our schools, children and families, our care homes, the low income families in our community, and the new housing within the area. We'd like to be able to focus on Anna Chaplaincy and further pastoral work, however we need the support from our community to do so. There are also potential opportunities for town chaplaincy, creating new worship congregations and encouraging spiritual growth and discipleship on our social media platforms. This will be a task and a challenge for our new Team Rector.



ST MARY'S, ST JOHN'S AND NEWPORT MINSTER

THE CHURCH BUILDINGS



Newport Minster is a Grade 1 listed building and dates back to the 12th Century. It is the focal point of the town and its size enables the building to be used for major and civic events. The minster is currently going through a major restoration project. There is also the parish centre, located just around the corner to the minster, which is used by the parish as a base for meetings and is also hired out to community users throughout the week.

St John's Newport dates from 1837, it is a Grade 2 listed building and is on the At Risk Register. The building has undergone essential repairs and maintenance which are currently still in progress. The church benefits from having an adjacent hall, which is widely used by the local community. The two buildings have been the subject of an ambitious scheme, the 2020 Vision, to renew the buildings, the aim being to make the church more flexible in its use, providing a larger community space, and to create a musical hub for the Island to appeal to the cultural need.

St. Mary's Carisbrooke dates back to the 12th Century and is the earliest church in the parish, beginning its life as a quaint priory church. It is also Grade 1 listed. It is located above the main road, through the village. Ongoing maintenance to the church is funded with the help of the Friends of Carisbrooke Church, which attracts support from across the parish. At the moment, there are no toilet facilities within the church, but we are looking into the possibility of installing a toilet in the future. The church also boasts a two-storey hall which is often used by the community and is just a short walk from the church itself.

St. Nicholas in Castro is an ancient chapel in the grounds of Carisbrooke Castle which was rebuilt in 1904 and then restored and rededicated in 1929 as the County War Memorial. The day to day maintenance is the responsibility of the English Heritage, who manage the site.

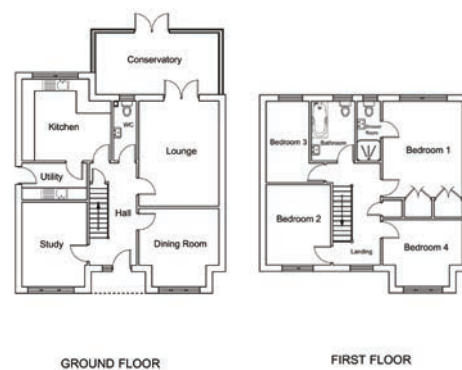
St Olave's Gatcombe was dedicated in 1292. The church is popular with visitors due to the heritage of the building, including a wooden crusader effigy and the local legend of 'Lucy Lightfoot'. The church is open for quiet contemplation during the day. The church already boasts a kitchenette and an eco-friendly



ST OLAVE'S, ST NICHOLAS-IN-CASTRO AND MINSTER RESTORATION WORK

toilet and there are plans for further eco-friendly improvements by updating the heating and possible installation of solar panels. There is an extensive open churchyard at St Olave's that is a haven for wildlife.

In addition, there are a number of other buildings owned by the parish. These include the Working Men's Club in Carisbrooke High Street, currently rented as a store, and two almshouses in Newport High Street. The almshouses are used to give homeless people a secure place to live, although they are in need of some further restoration work to improve them.



NEWPORT VICARAGE

- 4-bed detached house with driveway and conservatory
- 3 reception (2 plus study), one bedroom with ensuite shower room
- All very nicely decorated

PARISH VISION

The overall vision and mission of the parish has an ambitious focus on families, children and schools, creating a pastoral team, providing an Anna Chaplain for the parish, setting up new worshipping congregations and providing a community hub for the local community, as well as, improving discipleship, spirituality and prayer within the congregation.

The minster is currently going through a major restoration project for both



external and internal works, which will be completed by October 2023. The restoration is being managed by the Heritage Project Board (made up of members of the PCC, the Friends of Newport Minster and community members), which reports into the PCC. The Friends of Newport Minster are an active part of both the project board and in raising funds for the restoration project. The restoration work includes a new kitchen and toilets with the overall aim of the minster becoming a hub for the local community.

As part of the restoration project, there is funding for a community engagement co-ordinator to support community work at the minster, and a commercial officer to help co-ordinate events and raise income. The restoration project has been challenging due to the building closing for parts of the work and the short timescale in which the work has had to be completed. However, we are very much looking forward to having a building that is fit for purpose at the completion of the project that will be at the heart of the community once more.

There are also significant plans to make improvements to the other three churches within the parish, including the 2020 Vision plan at St John's, toilets and accessibility at St Mary's and eco-friendly heating and solar panels at St Olave's.

FINANCE

The reorganisation and mission of the parish is currently supported by funding from the national Church of England's Strategic Development Fund. As with many parishes across the country, we have struggled during the last few years due to the covid pandemic. This, alongside, lower attendance has meant that the parish at the end of 2021, was in Parish Share arrears of £192,000. St Olave's is currently paying it's Parish Share in full.

Due to the ongoing restoration project, the Minster is currently struggling financially. However, this is a temporary issue that will be resolved when the building is reopened as a church and community hub after the project is completed. As a parish we are looking at income and expenditure to improve the situation. All churches fundraise on a regular basis towards the upkeep and day to day running costs of the parish. We are also working towards combined parish finances as part of the reorganisation. St John's and the Minster gain income from membership of the Parish Giving Scheme. St John's, the Minster and St Mary's all raise income from hall lettings.

St Mary's, St Olave's and Newport Minster all have one or more small charities for which the churchwardens and vicars are trustees. Most of these are used to support those in hardship or distress, directly or through organisations such as the Foodbank.

Ministering within this parish is an exciting opportunity because there is such enormous potential to become a community hub for all those living at the heart of the island. There is a great enthusiastic team across the parish who are working hard to make the love of God known across the parish of Newport, Carisbrooke and Gatcombe.

HOW TO APPLY



If you believe God is calling you to join us in sharing the love of God with the communities of Newport, Carisbrooke and Gatcombe and to play your unique part in building the Kingdom of Christ on the Isle of Wight we'd love to hear from you.

Application details are available of the Diocese of Portsmouth website at portsmouth.anglican.org/newport/.

If you'd like an informal conversation please feel free to contact Allie Kerr, Interim Archdeacon on allie.kerr@portsmouth.anglican.org, 023 9289 9699.



1st Floor, Peninsular House
Wharf Road
Portsmouth
PO2 8HB
023 9289 9650
portsmouth.anglican.org

@CofEPortsmouth

