

# Portsmouth Diocese Resourcing Growth

Parish Public Consultation

# Welcome

- Timescales for this evening
- Everyone is welcome to have their say, and there will also be further opportunities
- We are keen to hear what you like about our general proposals, any concerns you might have, and anything we've not thought of so far

# Opening Prayer

Father, we seek the guidance of your Holy Spirit  
as we reflect on the future.

Give us vision, hope, and responsibility.

Help us as we imagine and as we plan,

as we speak and as we listen,

to honour your name,

to advance your kingdom,

and to carry out your will.

**Amen.**

# Agenda

- Why are we changing?
- What might we be changing?
- When might we be changing?



# Why are we changing?

- We are exploring new patterns of ministry in churches across the diocese, not just in this deanery.
- There are some areas of the diocese where, despite the best efforts of clergy and congregations, relatively few people go to church.
- At this time we have the opportunity to apply for additional funds to support new growth projects. In order to be eligible for these funds we also need to release money from our existing budgets and invest in mission.

# Why are we changing?

We have learned that . . .

- Working with more children and families leads to growth
- When churches relate to local needs – eg debt, food poverty, housing, carers, loneliness – then they can also help people grow in faith
- People who have never gone to church before are unlikely to join in with what we currently do, but some will come if we provide new, accessible, child-friendly worship

# Why are we changing?

We have learned that . . .

- Planting new churches with a fresh approach – eg Harbour Church in Portsmouth city – can rapidly reach many people who wouldn't otherwise go to church
- Any new initiative works best with a whole team approach, not just a lone individual
- Any new resourcing initiative needs help and support from surrounding churches, deanery, diocese, and can give support and resources back to others in turn as it grows

# Why are we changing here?

- We want to create an environment in Newport where:
  - all of the churches can flourish and grow
  - we can be wise stewards of all of the resources that we have
  - the church buildings can be better used by the local community
  - the churches can have a bigger impact on some of the issues which are faced in this area
  - churches here can be a resource and support to other churches on the island

# Why are we changing here?

- We want to free up people, finances, administrative burdens and buildings from solely maintaining the existing church in order to be able to support new projects, opportunities and communities.

# What might we be changing?

- The town of Newport is currently made up of four separate parishes
- The four parishes are currently supported by 2.8 FTE of clergy staff

# What might we be changing?

We want to:

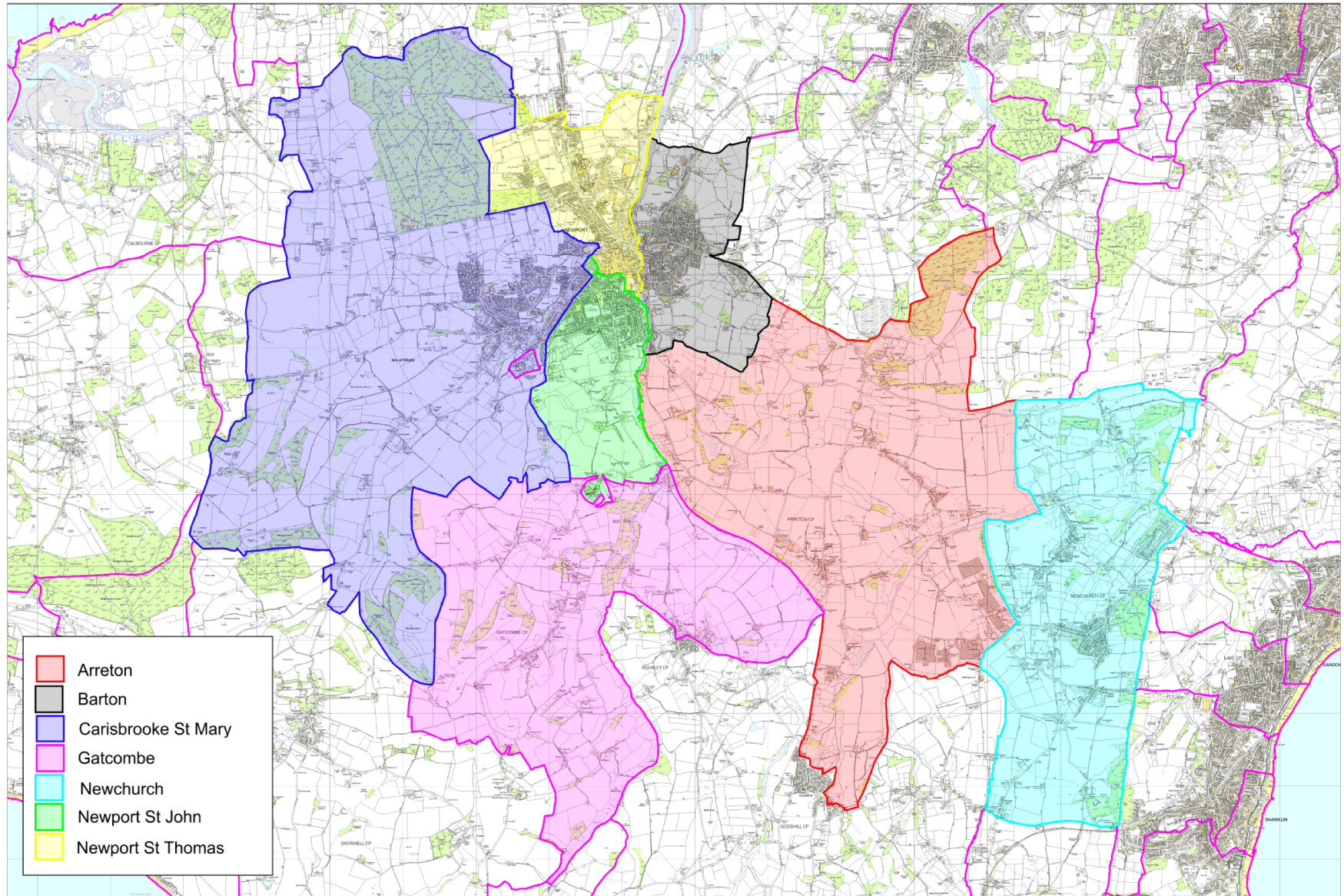
- Create one parish that covers all of the town of Newport
- Increase the staffing levels from 2.8 to 5 FTE across the parish, with a mixture of clergy, pioneering and operations staff
- Invest in updating building resources to ensure the buildings can be better used by local communities
- Create an intern programme to help young people on the island explore their vocation

# What might we be changing?

- We are considering taking out the town part of Carisbrooke from the rural part of the parish of Carisbrooke and the parish of Gatcombe.
- We would aim to combine the remaining rural part with the parishes of **Arreton and Newchurch**.
- This would make one parish that covers all of the area south of Newport.
- We would create one full time post to serve these parishes replacing the two part-time roles currently in place.

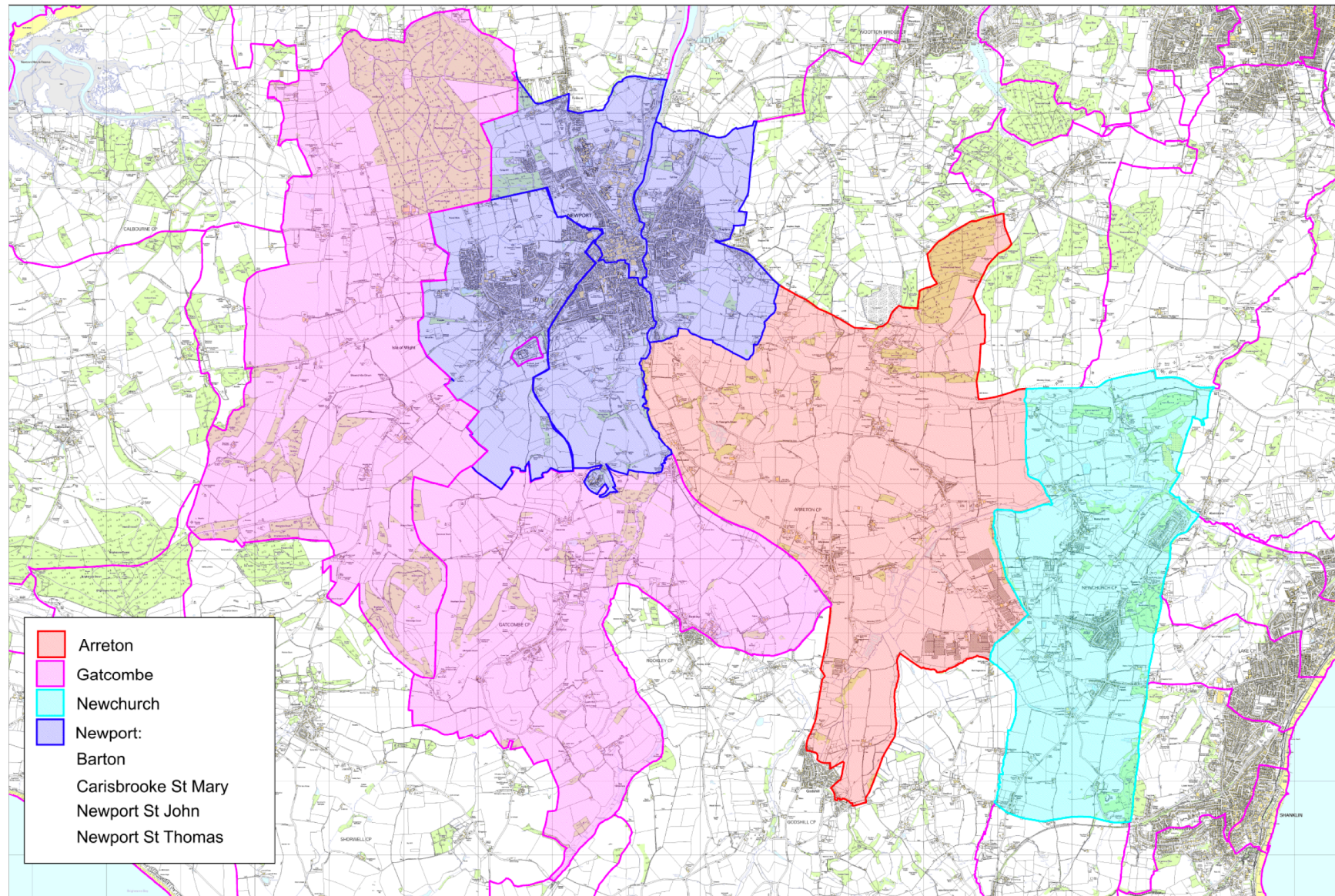


# What might we be changing?





# What might we be changing?



# What might we be changing?

- Including existing resources we aim to spend over £1.5 million over the next five years on ministry in Newport.

# What are we being consulted about?

- Although we are keen to hear your views on our proposals for new ministry in Newport town, what we need to consult you about – first informally and then formally, when more definite plans are in place – is basically this:

*Should we create one new town parish which combines the existing parishes or parts of parishes in Newport; and one new rural parish where the remaining parts join with Newchurch and Arreton?*

# What are we being consulted about?

- But we would like also to hear your views on the kinds of ministry that you think we should prioritize in Newport in the future and how we might best do that:

# Time for small groups

Focus:

- 1. What do you like about the plans that we have outlined so far?*
- 2. Does anything concern you?*
- 3. What have we not considered that we might need to look at further?*

PLEASE USE THE STICKIES TO RECORD  
YOUR IDEAS

# When might we be changing?

We are currently entering the *informal* consultation part of the process.

w/c **Monday 15 Oct** - Public Consultation Meetings

**Friday 19 Oct** - Letters sent to Legally Interested Parties plus anyone else who asks for them



# When might we be changing?

**Friday 30 November** - closing date for written responses

**Wednesday 5 December** - information and any scheme changes presented to the Bishop's Council



# When might we be changing?

Following this we will have a *formal* consultation process lasting eight weeks:

**Friday 7 December 2018** – formal consultation documents sent

**Friday 1 Feb 2019** - closing date for written responses

**Monday 11 March 2019** – final scheme presented to the Bishop's Council

**Friday 15 March 2019** – Bishop Christopher to send final schemes to Church Commissioners Pastoral Division

# When might we be changing?

When the scheme has been received by the Church Commissioners Pastoral Division they will review and evaluate it, also looking at comments from this and other parts of the consultation process. They will make a decision in either May or July 2019.

The scheme could be made as early as 1 June 2019 and could come into effect on 1 December 2019.

Between these two dates we would look to recruit to new and vacant positions with the aim of people starting in new roles by 1 January 2020.

# How we will communicate and how people can communicate with us?

We will continue to put information on the diocesan website and on our own social media. We will send emails to parish clergy and officers.

As well as the formal letters which are sent to interested parties, we are keen to hear from anyone who has a view.

You can email our deputy diocesan secretary:  
[jenny.hollingsworth@portsmouth.anglican.org](mailto:jenny.hollingsworth@portsmouth.anglican.org)

You can write to us at The Diocese of Portsmouth, Peninsular House, Wharf Road, Portsmouth, PO2 8HB.



# Closing prayer

Lord God, you have called your servants  
to ventures of which we cannot see the ending,  
by paths as yet untrodden,  
through perils unknown.

Give us faith to go out with good courage,  
not knowing where we go,  
but only that your hand is leading us  
and your love supporting us;  
through Jesus Christ our Lord. Amen.