

Portsmouth Diocese Resourcing Growth

Parish Public Consultation

Welcome

- Timescales for this evening
- Everyone is welcome to have their say, and there will also be further opportunities
- We are keen to hear what you like about our general proposals, the concerns you might have, and anything we've not thought of so far

Opening Prayer

Father, we seek the guidance of your Holy Spirit as we reflect on the future.

Give us vision, hope, and responsibility.

Help us as we imagine and as we plan,
as we speak and as we listen,

to honour your name,

to advance your kingdom,

and to carry out your will.

Amen.

Introduction

- This is the beginning of a six month process of consultation
- There will be a number of opportunities for everyone to engage both formally and informally within this process
- This process **is** being driven by a desire to increase our impact within these areas and to reach more people with the love of God and **is not** being driven by costs savings, closing churches or by choosing only to manage decline

Agenda

- Why are we changing?
- What might we be changing?
- When might we be changing?

Why are we changing?

- We are exploring new patterns of ministry in churches across the diocese, not just in this deanery.
- There are some areas of the diocese where, despite the best efforts of clergy and congregations, relatively few people go to church.
- At this time we have the opportunity to apply for additional funds to support new growth projects. In order to be eligible for these funds we also need to release money from our existing budgets and invest in mission.

Why are we changing?

We have learned that . . .

- Working with more children and families leads to growth
- When churches relate to local needs – eg debt, food poverty, housing, carers, loneliness – then they can also help people grow in faith
- It is significantly more likely that we will attract those who have never gone to church before by also providing new, accessible, child-friendly worship services

Why are we changing?

We have learned that . . .

- Planting new churches with a fresh approach – eg Leesland Neighbourhood Church in Gosport and Harbour Church in Portsmouth city – can rapidly reach many people who wouldn't otherwise go to church
- Any new initiative works best with a whole team approach, not just a lone individual
- Any new resourcing initiative needs help and support from surrounding churches, deanery, diocese, and can give support and resources back to others in turn as it grows

Why are we changing here?

- We want to create an environment in Gosport where:
 - all of the churches can flourish and grow
 - we can be wise stewards of all of the resources that we have
 - the church buildings can be better used by the local community
 - the churches can have a bigger impact on some of the issues which are faced in this area
 - churches here can be a resource and support to other churches in Gosport deanery

Why are we changing here?

- We want to free people from the burdens of finances, administration, and buildings so that rather than only maintaining the existing church they will also be able to support new projects, opportunities, and communities

What might we be changing?

- The deanery of Gosport is currently made up of a number of parishes, some of which are stand alone and some of which are already part of a united benefice
- There are currently four full time clergy who cover the parishes which we are consulting about this evening

What might we be changing?

We want to:

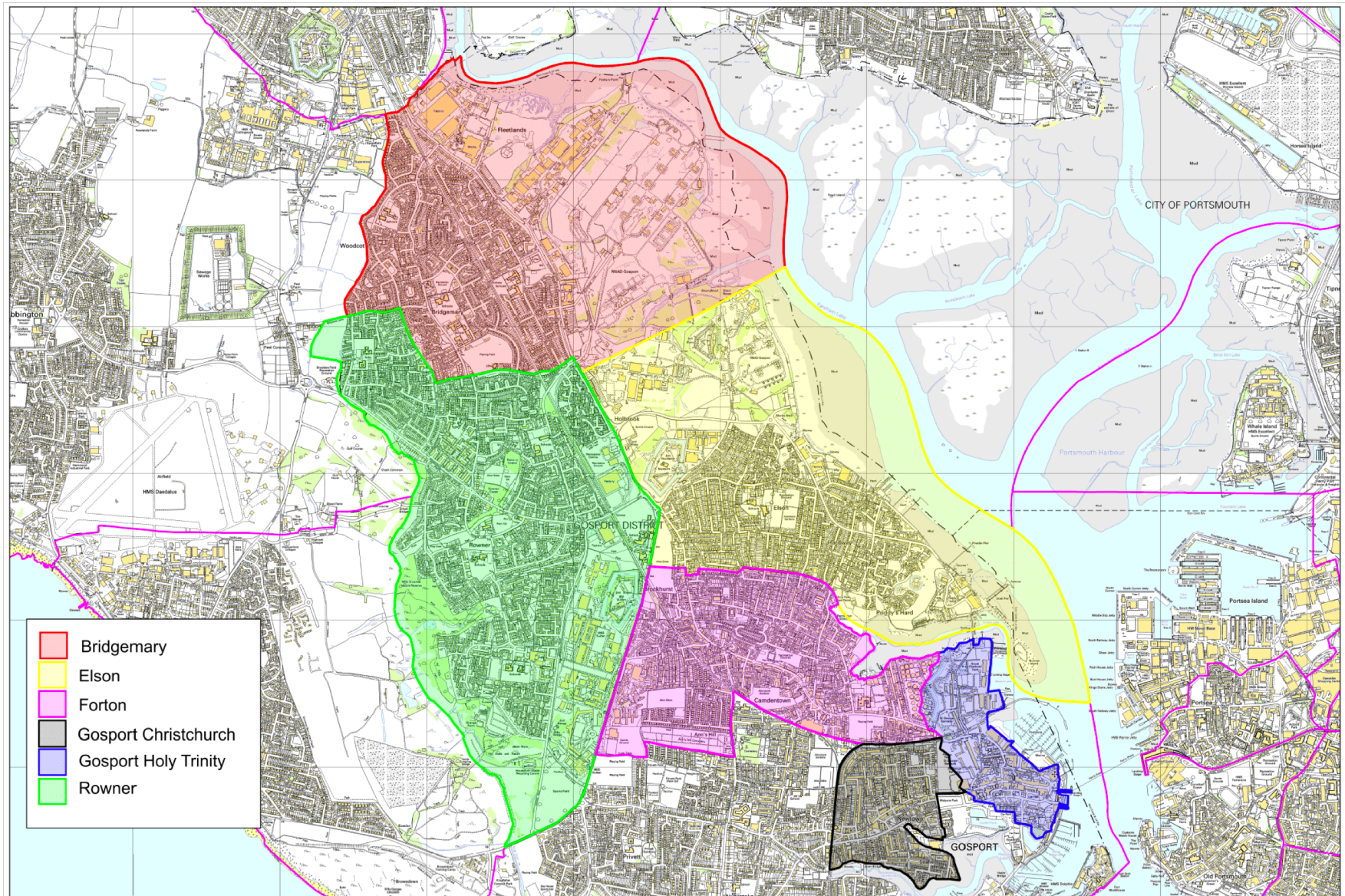
- Create two new united benefices
- One that covers the western part of Gosport comprising the parishes of Bridgemaury and Rowner
- One that covers the eastern and central parts comprising the parishes of Elson, Forton, Christ Church and Holy Trinity

What might we be changing?

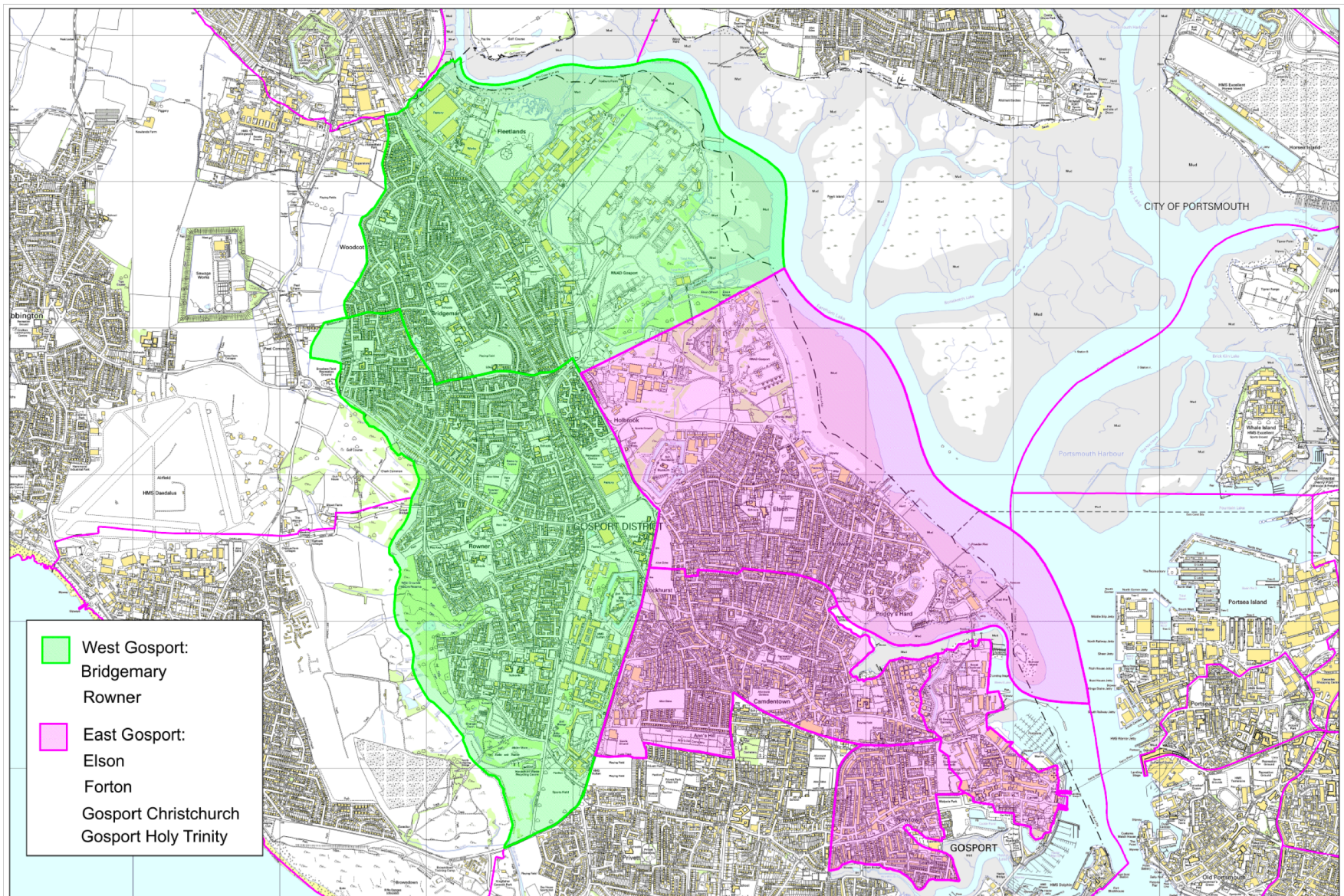
We want to:

- Increase the staffing levels from 4 to 6 across this parish, with a mixture of clergy, pioneering and operations staff
- Invest in updating building resources to ensure the buildings can be better used by local communities

What might we be changing?



What might we be changing?



What might we be changing?

- Over the coming weeks we are going to be talking to local churches and community groups about what this investment could look like. We will want to hear your views.
- At the moment we don't know exactly what this will look like but possible ideas include:
 - a church plant focussed on younger people
 - more children's and families ministry
 - social outreach – foodbanks, debt support, carers?
 - operational support for buildings, finance, and administration

What might we be changing?

- Including existing resources we aim to spend nearly £2 million over the next five years on ministry in these parishes of Gosport
- This is approximately double what we currently spend

What might we be changing?

- We want everyone to know the fullness of life that comes from faith in Jesus Christ
- We want all our churches to be able to grow so that they are sustainable and can reach more people
- We believe that by combining parishes together, introducing new types of church alongside the existing ones, and having coordinated plans for ministry, we could help these things to happen

What are we being consulted about?

- Although we are keen to hear your views on our proposals for new ministry in these parts of Gosport, what we need to consult you about – first informally and then formally, when more definite plans are in place – is basically this:

Should we unite benefices within Gosport and so create one united benefice of Bridgemaury and Rowner and one united benefice which combines the parishes of Elson, Forton, Gosport Christ Church and Gosport Holy Trinity?

Time for small groups

Focus:

- 1. What do you like about the ideas that we have outlined so far?*
- 2. What concerns you?*
- 3. What have we not considered that we might need to look at further?*

PLEASE USE THE STICKIES TO RECORD
YOUR THOUGHTS

When might we be changing?

We are currently entering the *informal* consultation part of the process.

w/c **Monday 15 Oct** - Public Consultation Meetings

Friday 19 Oct – Informal letters sent to Legally Interested Parties plus anyone else who asks for them

When might we be changing?

Friday 30 November - closing date for written responses

Wednesday 5 December – statements of view and any scheme changes presented to the Bishop's Council

When might we be changing?

Following this we will have a *formal* consultation process lasting eight weeks:

Friday 7 December 2018 – formal consultation letter and draft proposals sent to legally interested parties

Friday 1 Feb 2019 - closing date for written responses

Monday 11 March 2019 – statements of view and final draft proposals presented to the Bishop's Council

Friday 15 March 2019 – Bishop Christopher to send draft scheme to Church Commissioners Pastoral Division

When might we be changing?

When the scheme has been received by the Church Commissioners Pastoral Division they will review and evaluate it, also looking at comments from this and other parts of the consultation process. They will make a decision in either May or July 2019.

The scheme could be made as early as 1 June 2019 and could come into effect on 1 December 2019.

Between these two dates we would look to recruit to new and vacant positions with the aim of people starting in new roles by 1 January 2020.

How we will communicate and how people can communicate with us?

We will continue to put information on the diocesan website and on our own social media. We will send emails to parish clergy and officers.

As well as the formal letters which are sent to interested parties, we are keen to hear from anyone who has a view.

You can email me, your deputy diocesan secretary:
jenny.hollingsworth@portsmouth.anglican.org

You can write to us at The Diocese of Portsmouth, Peninsular House, Wharf Road, Portsmouth, PO2 8HB.



Closing prayer

Lord God, you have called your servants to ventures of which we cannot see the ending, by paths as yet untrodden, through perils unknown.

Give us faith to go out with good courage, not knowing where we go, but only that your hand is leading us and your love supporting us; through Jesus Christ our Lord. Amen.