

ECO CHURCH

AN A ROCHA UK PROJECT

Using our Voices For Creation



Polly Eaton | Eco Church, A Rocha UK

AN A ROCHA UK PROJECT
WILD  CHRISTIAN
connecting faith, nature and climate

A  **UK ROCHA**
Caring for God's Earth



Demonstrating that the gospel is good news for God's earth



AN A ROCHA UK PROJECT
WILD CHRISTIAN
connecting faith, nature and climate



AN A ROCHA UK PROJECT
PARTNERS IN ACTION



ECO CHURCH
AN A ROCHA UK PROJECT



Inspiring people





St. Francis preaching to the birds

Gilbert White 1793
1720
1920



Open your mouth, judge righteously,
defend the rights of the poor and needy.
Proverbs 31:9

What does campaigning and advocacy look like?



Using our voices

Faith groups at Act Now Change Forever

Photo credit: Climate Coalition





ACT NOW
FOR CLIMATE
& NATURE
TO BACK THE
CLIMATE CHANGE BILL
FOR A LIKELY FUTURE

Linkage between Wild Christian and Eco Church

Bristol Act for Nature day, 2023



Creation Care

Encouraging households
to care for God's world



**Worship
& prayer**



Home



Food



Garden



Possessions



Travel



**Community
& global
engagement**



Creation Care

Encouraging households
to care for God's world

See how you're doing

- ▶ In each area
- ▶ And overall

Worship and Prayer



Current Score
18 Award Level
Bronze

[Update Answers](#)

Home



Current Score
220 Award Level
Gold

[Update Answers](#)

Garden



Current Score
90 Award Level
Silver

[Update Answers](#)

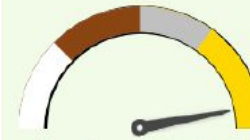
Travel



Current Score
80 Award Level
Bronze

[Update Answers](#)

Food



Current Score
157 Award Level
Gold

[Update Answers](#)

Possession



Current Score
144 Award Level
Gold

[Update Answers](#)

Community and Global Engagement



Current Score
136 Award Level
Gold

[Update Answers](#)

Award Level

Bronze
Commended

[View Certificate](#)



Creation Care

Encouraging households
to care for God's world

Create your 'to do' list

- ▶ Get ideas for changes you can make to better care for God's creation
- ▶ And keep track of your progress by creating your personal 'to do' list

To Do List

Worship and Prayer

How often do you spend time outdoors enjoying nature?

[Go To Question](#)

How often do you pray for groups or organisations working on environmental problems?

[Go To Question](#)

Home

The gas supplied to our home is generated from renewable sources and/or charged according to our supplier's 'green tariff'

[Go To Question](#)

The lighting in our home uses energy efficient light bulbs as follows

[Go To Question](#)

We try to save water by having short (less than 4 minutes) showers or sink washes rather than long showers or baths

[Go To Question](#)

Our heating thermostat is set to

[Go To Question](#)

Garden

Do you have any of these management features in your garden?

[Go To Question](#)

Travel

We usually choose holiday destinations that we can travel to by

[Go To Question](#)

Food

We avoid products with unethically sourced palm oil

[Go To Question](#)



Creation Care

Encouraging households
to care for God's world

Taking part as a church

"Let us consider how we may spur one
another on toward love and good deeds"

Hebrews 10:24



Creation Care

Encouraging households
to care for God's world

Sign-up today: www.creationcare.org.uk

Creation Care

[Home](#) [About](#) [Households](#) [Resources](#) [Register Church](#) [Contact us](#)

Households

Returning?

Username or Email Address

Password

Remember Me

Log In

Register Account

Email Address *

Password *

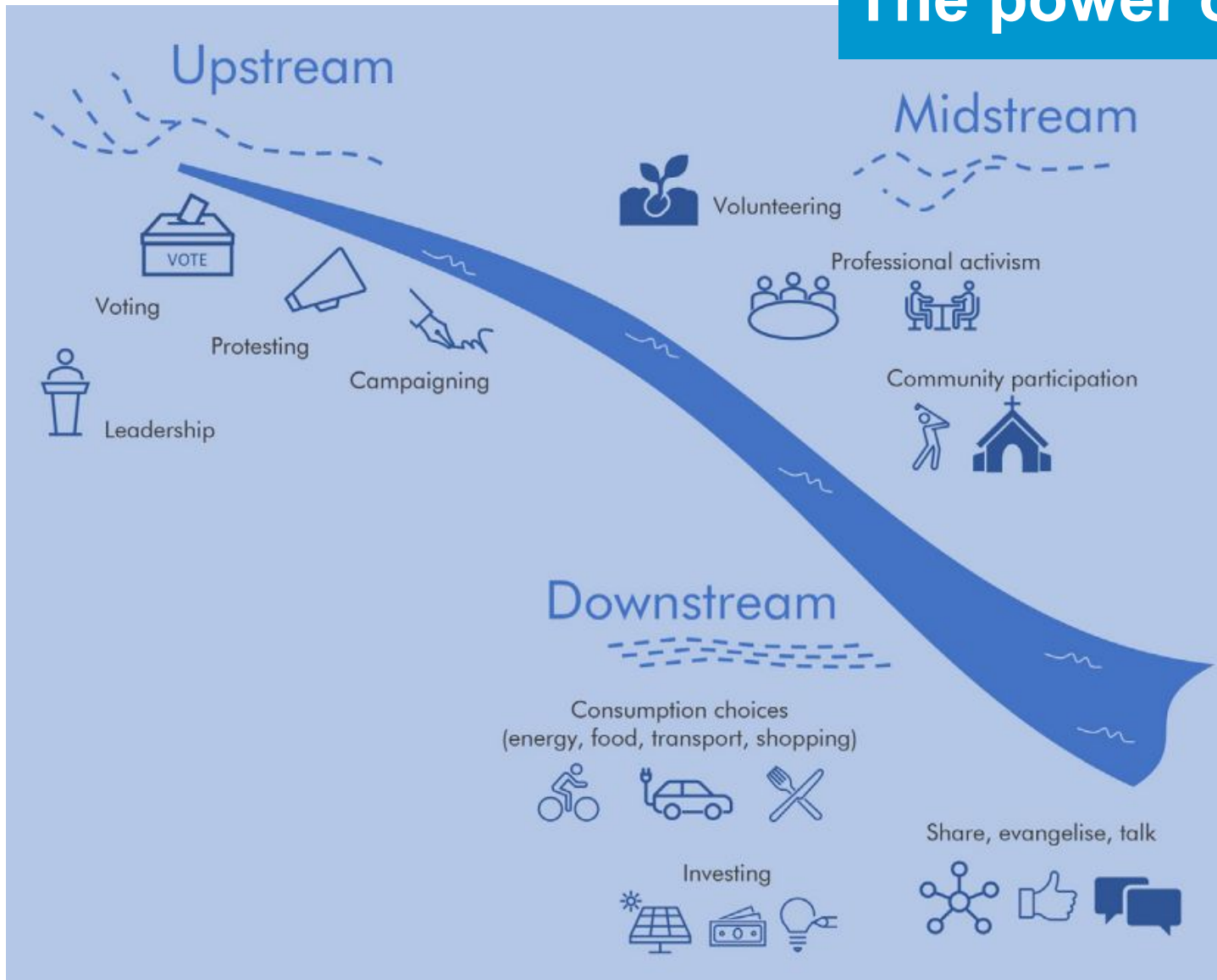
Confirm Password *

Submit

The power of YOU!



The power of YOU!



[Choices for climate action: A review of the multiple roles individuals play by Sam Hampton and Lorraine Whitmarsh \(2023\)](#)

The Fairtrade story



Stonehouse Methodist Church

RECYCLE A BOOK

We are an Eco Church so are recycling those
BOOKS
Please support this by taking a book for £1
and making a small donation (like to the
table book)
Money raised will support future Eco Church
projects and help save the Planet

If you have any books to donate, please
bring them to the church for the service
Thank you
DONATIONS FOR ECO CHURCH
PROJECTS
Thank you

COFFEE OR TEA -
WITH A PANCAKE
SUGGESTED DONATIONS £5
TOPPING
Golden Syrup -
Golden Syrup
Chocolate Spread
Strawberry Spread
SLAB OF CAKE
£1.00
*Fairtrade products



Sustainable YOU!

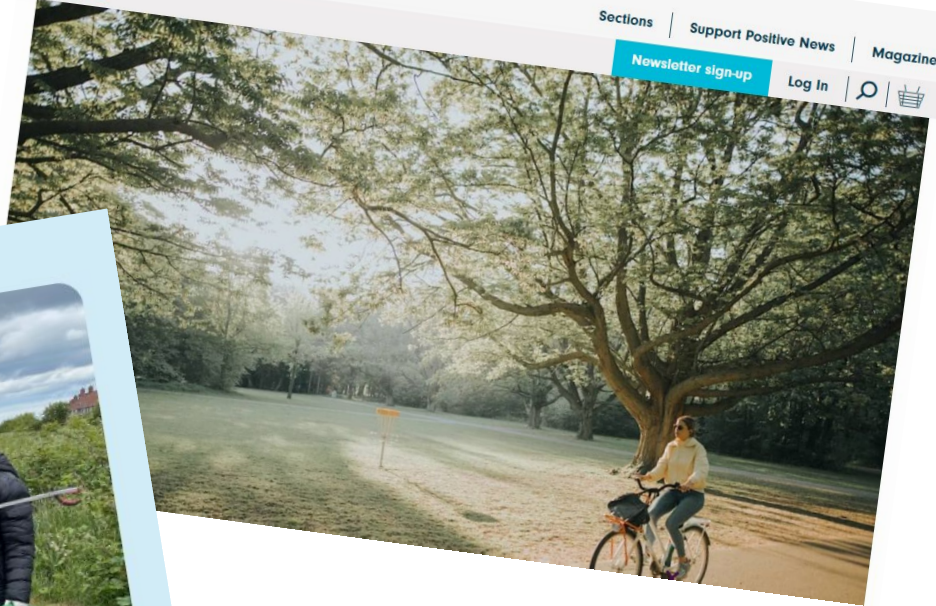
Positive.News



Sections | Support Positive News | Magazine

Newsletter sign-up

Log In



Credit: Climate Action Middlesbrough

THE GREAT
BIG GREEN
WEEK

AN A ROCHA UK PROJECT
WILD CHRISTIAN
connecting faith, nature and climate



arochoa.org.uk
ecochurch.arocha.org.uk



[@arochoa-uk](https://www.linkedin.com/company/arochoa-uk)



[@arochoa_uk](https://www.instagram.com/arochoa_uk)



[@Arochaorguk](https://www.facebook.com/Arochaorguk)



[@ARochaUK](https://www.x.com/ARochaUK)

