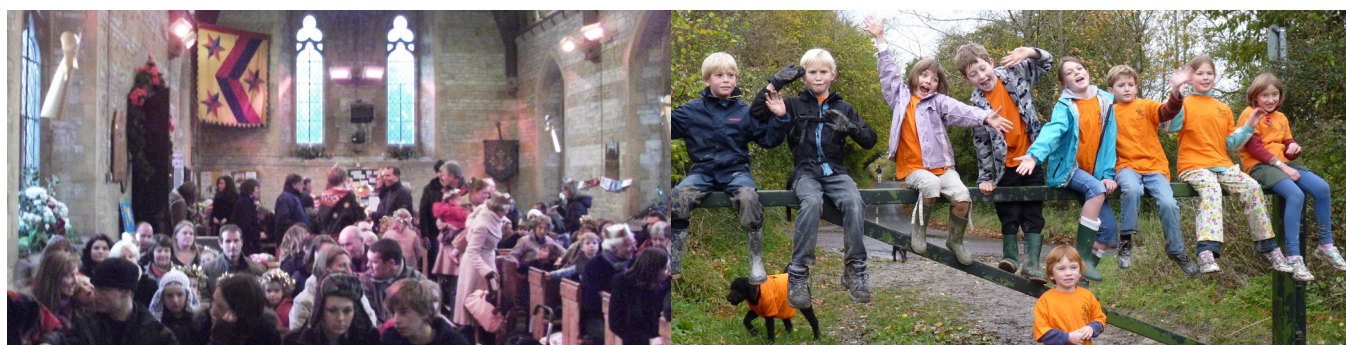


The People and Church at St Mary Magdalen, Sheet

*Petersfield Deanery
Diocese of Portsmouth*

Parish Profile



www.stmarymagdalensheet.org.uk

Foreword

The Church at St Mary Magdalen, Sheet, aspires to being a lively, outgoing, Anglican fellowship that seeks to move forward in discipleship, service and mission, empowered by the Holy Spirit. Its members come from Sheet, Petersfield and surrounding villages on the border of East Hampshire and West Sussex.

This profile is offered as an aid to those seeking to discern whether or not they are called to apply to be considered for appointment as our next incumbent. We welcome your interest in our Church and ask you to pray for us and with us.

Further information is available at www.stmarymagdalensheet.org.uk

Contents

<i>Section One</i>	4
The Diocese and Deaneries	4
The Village and Town	4
The Deanery and its Plans	7
Church Property	7
<i>Section Two</i>	9
Aspirations and Priorities	9
Our Parish	9
Worship	10
Music at St Mary's	11
Prayer	11
Healing and Listening Ministries	12
Pastoral Care	12
Ministry	13
Teaching and Training	13
Administration	14
Finance	15
Outreach and Mission	15
Recent and Current Initiatives and Issues	16
<i>Section Three</i>	17
Our New Leader	17
<i>Appendices</i>	18
Parish Map	18
Photos of the Church Building	19
Plan of the Church Building	20
Current Administrative Structure	21
Current Pattern of Services and Attendances	22
Parish Budget	24

Section One

Diocese, Deanery, Village, Town, Church Buildings

The Diocese and Deaneries

The Diocese of Portsmouth is the smallest in mainland England and, rather than this being a handicap, it is a friendly area and the clergy and the laity get to know each other well. Many clergy feel very much part of diocesan life.

The Diocese has one Bishop and three Archdeacons:

- Archdeaconry of Portsdown (Deaneries of Portsmouth and Havant)
- Archdeaconry of the Meon (Deaneries of Bishop's Waltham, Fareham, Gosport and Petersfield)
- Archdeaconry of the Isle of Wight (Deaneries of East Wight and West Wight)

The Deanery of Petersfield consists of the parishes of:

Blackmoor and Whitehill, Bramshott and Liphook, Buriton, East Meon, Empshott, Froxfield with Privett, Greatham, Hawkley, Langrish, Liss, Petersfield, Sheet, Steep.

Our parish plays a full and active part in the life of the Deanery

The Village and Town

Sheet

Sheet village lies just North of Petersfield in East Hampshire. St Mary Magdalen, Sheet is a parish of just over 4,000 residents. The church is at the centre of Sheet village, close to the village green but not at the geographical centre of the parish. The parish itself crosses London Road and includes areas of housing to the East of Petersfield town centre, including the recent Ramshill Estate, and Penns Place, the site of the Taro Leisure Centre and of the offices of East Hampshire District Council.

Sheet residents assert that the village is separate from Petersfield and there has been a recent successful campaign to revert Sheet to its own Parish Council, ending its current status as a ward of Petersfield Town Council.

Section One

Sheet has an attractive village green, with a pub and village hall close to the church, a second pub but no shop or post office. A convenience store on the Herne Farm estate and a newsagent on Durford Road are both inside the parish and south of London Road. Bus services run through Herne Farm and the Durford Road area, and also along London Road.

Sheet Primary School is in the parish. The previous vicar was a community school governor and encouraged links with the village community. The Church uses the Village Hall every week.



Petersfield

Petersfield, an attractive market town, has a population of about 15,000 residents (including Sheet). It lies in East Hampshire near the border with West Sussex and within the South Downs National Park. Butser Hill, an historic beacon, lies just to the south and is a staging post on the South Downs Way. Petersfield is roughly twenty miles from Portsmouth, Chichester, Winchester and Farnham, with Guildford slightly further away.

The town is on the main railway line from London to Portsmouth. At peak times, the journey to London Waterloo takes just over one hour. The A3 from London

Section One

to Portsmouth and the A272 from Midhurst to Winchester cross at Petersfield. Many national retail chains have branches in the town, including Waitrose, Tesco and Boots. There are also several smaller independents and a market in the town square every Wednesday and Saturday, with a farmers' market on the first Sunday of each month. There are several good restaurants, ranging from one with a Michelin 'star' through to a McDonald's and coffee shops.

There are several good schools in the area, including both infant and junior. None of the local primary schools are Church of England aided or controlled. The secondary schools are The Petersfield School (TPS) and Churcher's College, which is independent; both are co-educational. Herne Junior School and Sheet Primary School both lie within the St Mary's parish, as does Churcher's College. Two other independent schools, Bedales and Ditcham Park, are outside the town.

The small but excellent Petersfield Hospital has maternity, general and elderly care wards and a Minor Injuries Unit. The nearest Accident and Emergency unit is at Queen Alexandra's Hospital in Cosham, Portsmouth.

Petersfield is a lively town with many cultural, sporting and recreational options. There is an annual Music Festival, several choirs and other musical groups, amateur dramatic and operatic societies, a U3A and a twinning association linked to towns in France and Germany. There is an outdoor swimming pool and the thriving Taro Leisure Centre, with indoor pool and sports halls.



Petersfield Square Courtesy of Bob Patten

Section One

The Deanery and its Plans

In common with most parts of the Church of England, Portsmouth Diocese is planning for reductions in cost and staffing. The Petersfield Deanery consists of thirteen parishes to the north and west of Petersfield. Currently 9 benefices are served by 8½ stipendiary clergy, with one half time deanery post. In addition, there are also 3 self-supporting Ministers, one of whom is House for Duty, plus five Title Curates, two of whom are stipendiary.

By 2014, the number of stipendiary clergy may fall to 7 and draft plans to achieve this are well advanced; no parish in the Deanery would recruit until the number of stipendiary clergy had fallen to 6. The fact that this parish profile is now being distributed means that recruitment may start.

Church Property

The church

(Further information is appended.)

St Mary Magdalen is a good example of a simple Victorian country church, typical of its period. The church is constructed of local stone with Bath stone dressings. Consecrated in 1868 and built in a 13th Century style, it consists of a nave, chancel and clergy vestry plus tower with steeple and south-facing porch; a choir vestry has been added to the opposite side of the chancel. Traditional pews seat 160, augmented if needed by stacking chairs. There are lawns and flowerbeds in the small area around the church. An area to the north and west of the church is currently reserved for the interment of ashes.

Apart from necessary repairs, recent works have included new infrared heating in the nave, a fixed digital projector with laptop computer connections and a retractable screen which can be lowered over the East window. The next significant improvement, agreed in principle by the PCC, is the reordering the chancel to improve its flexibility of use for the wide range of worship activities; a traditional Victorian church with pews in that area does not lend itself readily to less formal styles of worship. The fabric of the church has been very generously aided and improved by the "Friends to Sheet Church", a separate

Section One

registered charity. For example, the Friends contributed just over £6,000 to the new projector and screen, which represented over half of the cost.



Sheet Village Hall

Village Hall

St Mary Magdalen does not have its own hall. Instead, it uses the village hall, 80 yards away, as both meeting place (for example for coffee after 10.00 services) and a centre for special occasions.

Vicarage (in Pulens Lane)

The Vicarage is approximately a quarter of a mile from the church and fairly central to the parish as a whole. Built in 1938 as a private home, it is a pleasant four-bedroomed detached house with entrance hall, study, kitchen, cloakroom, utility room and a large sitting/dining room. It is centrally heated and has an open fire in the lounge. There is a single detached garage, ample parking in the drive and a good-sized, easily maintained, garden. The Parish Office is adjacent to, but separate from, the house and is currently approached via the front drive.

Section Two

Parish and Church Life

Aspirations and Priorities

The Church at Sheet seeks to move forward in discipleship, service and mission - as children of the Father, as disciples of the Son and empowered by the Holy Spirit. In recent years, emphases have included Encountering God, Encouraging One Another and Engaging with the World. We have also participated in the pilot Imagine project of the London Institute for Contemporary Christianity (LICC), emphasising 7-day Christianity. We now wish to move forward, including future participation in the diocesan Ministry for Mission vision and initiative, and in growth, outreach and wider mission.

Much that is currently characteristic of the Church at Sheet will be evident from the rest of this Profile. Additionally, recent focussed corporate prayer and the gathering of prayerful input from the congregation (see later) have re-emphasised the following:

- A strong desire for Biblical teaching
- A clear emphasis on ministry that is truly to all ages
- A desire to promote wider involvement in the Church family
- A need to develop ministry to men
- A concern for renewal of ministry to Christian young people (a concern common to a number of local Churches)
- A concern for the development and strengthening of prayer and spiritual life within the Church
- A need to develop understanding of stewardship, both of finances and of wider aspects of creation

Our Parish

Until 1990 the church was a daughter church to St Peter's (the Parish Church for the remainder of Petersfield). St Mary Magdalen has since been a separate parish.

It is difficult to break out Sheet data from the general East Hants data. Our belief is that, although there are local pockets of deprivation, the area is more prosperous and less ethnically diverse than many comparable areas. Housing

Section Two

in the area is expensive. Accordingly, the town and its churches probably have fewer young families and more pensioners than comparable towns. For further insights, there are detailed demographic data on the East Hants website <http://www.easthants.gov.uk/>.



Worship

St Mary Magdalen caters for differing traditions. Early morning communions and evening services are traditional. Young Family Services are informal. Parish Communions follow a modern liturgy and All Age Worship has a flexible format. Depending on the context, service and song sheets are used or use is made of the projection facility. There are modern Bibles in the pews. The average Sunday attendance is 112 (including 15 children). Information on the detailed patterns of services and of attendance is appended.



Section Two

Grown-Up Sunday School (GUSS) is a recent innovation that is proving quite successful. Once a month a speaker spends time tackling one of the bigger or more difficult issues in our faith.

Audio recordings of sermons at some services are put on the parish web site (<http://www.stmarymagdalensheet.org.uk>).

Music at St Mary Magdalen

A range of music styles supports the different forms of worship. Our most recent Director of Music (a paid post) moved to lead a Church plant and we are advertising for a replacement. We have stand-in organists, a Choir Leader and a Choir, which is usually unrobed. Instruments used depend on context and include organ keyboard, flute, clarinet, violin, guitars and drums. We have an All Age Service band and Young Family Service musicians.



Prayer

We hold prayer to be at the very heart of our worship and community life but numbers at corporate prayer meetings do not currently reflect that aspiration. Organised prayer varies from contemplative, through to “Listening to God” and extempore prayer. There are opportunities for corporate prayer and parishioners are also involved in:-

Prayer Circle – a group of members from St Mary’s, who can be contacted for

Section Two

special or urgent prayer needs

Prayer Triplets – intercessory cells which meet regularly

Prayer Calendar – praying for all aspects of church life and for the organisations we support as part of outreach and mission

Prayer Board – available in church for prayer requests

Leading prayers and intercessions at services

Healing and Listening Ministries

These ministries are integral parts of Church life. Not only is there a bimonthly Healing Service but these ministries are also offered by the Church to people in their homes and after other services as relevant.

Pastoral Care

There are four residential/nursing homes in the Parish, together with a day centre and a disability day centre. The Chaplaincy Team leads monthly services of Holy Communion in each of the homes and day centres, and also instigates occasional fun social times in the homes and visits residents. The team also takes Communion to the sick and housebound. Transport is available to bring the infirm and wheelchair-bound to main services twice a month.

The Vicar of Sheet is Honorary Chaplain to Churcher's College (a co-educational independent school – 822 pupils) and provides a regular programme of pastoral visits and care. We also enjoy a close involvement with Sheet Primary School (102 pupils), taking occasional assemblies, making informal visits and welcoming groups of children to the church on visits, an annual Leavers' service and Christmas carol services. We also visit Herne Junior School (394 pupils, who come from the whole area) from which groups of children make occasional visits to the church.

The vicars of Sheet and Petersfield are de facto trustees of PASRIN (Petersfield and Sheet Relief in Need) and an associated alms house charity. PASRIN has small sums of money to allocate as required.

Section Two

St Mary's Old Friends (SMOFs) is an example of a longstanding, effective fellowship and mutual support group. SMART (St Mary's Rising Teens) is an occasional social group for older children.

Ministry

The Ministry Team includes most of the currently recognised forms of ministry.

Two NSM Deacons	Rev. Anderson Marsh (Asst Curate)
	Rev. Felicity Heal (PTO)
One Lay Minister	Mrs Linda Clist
One Priest	Rev. 'Mick' Micklethwaite (PTO)
One Retired Priest	Rev. Douglas Banyard
Five Lay Pastoral Assistants	

Teaching and Training

Kids' Church

This group meets in the Village Hall during Communion services. All leadership is lay and 39 children are on roll, with average attendance 20-25.



Section Two

GUSS – mentioned elsewhere

Home Groups

We have seven groups meeting regularly for Bible study, sharing, discussion, prayer and occasional social events. Four groups meet in the evening and three in the afternoon. The seven includes Littleys, a group aimed at parents with small children.

Sermon Series

There have been occasional sermon series. Some Home Groups have also followed the series topics during the week, some have not, being free to choose.

Alpha and Christianity Explored

We have whole-heartedly supported Petersfield Area Churches Together (PACT) in Alpha courses, some hosted by St Mary's. Christianity Explored is an alternative to Alpha and is currently being planned in the parish.

Training

In the last decade 2 men and 3 women from the Church have entered full time ordained ministry, nurtured, trained and supported by the then incumbents.

Administration

(a representation of the current administrative structure is appended)

In summary:

- We have a Parish Office and a part-time Parish Administrator.
- Both the Standing Committee and the PCC meet monthly. The PCC is a vigorous body, with members regularly involved in church life.
- Lay members act as Wedding Clerk, Baptism supporters, and Secretary to the PCC and Standing Committee. Lay Leadership is also a key feature of prayer cells and Home Groups, Intercessions, and All Age and Young Family

Section Two

services.

- A Sheet "sheet" is produced each Sunday. This gives details of services, notices and future events.
- The Safeguarding Officer implemented the new diocesan guidelines 'In Safe Hands' in Spring 2010. Relevant people have attended training in safeguarding vulnerable adults and have been to workshops on safeguarding children.
- At the end of 2011 there were 265 names on the Electoral Roll database, 100 from outside the parish.

Finance

The parish budget for 2011 was approximately £110,000 (fuller details are appended). The Parish Share accounted for 70% of income, a percentage that has increased in each of the last ten years. The reasonable expenses of the incumbent are met.

The "Friends to Sheet Church" is a charitable Trust, formed 15 years ago, which raises funds through regular donations by "Friends" and organises occasional events with the aims of both raising the Trust's profile and funds for contributing to the fabric of St Mary Magdalen. In recent years the "Friends" have been able to contribute to a range of maintenance and improvement projects.

Outreach and Mission

The Church strongly supports and belongs to PACT (Petersfield Area Churches Together) and the local church leaders meet monthly. PACT members set in motion and now nurture many of the local community action organisations listed below. Other PACT activities include "Prayer Impact", whereby groups meet regularly to pray for their neighbours, and a Good Friday Walk of Witness through Petersfield Town Centre, followed by an open-air service in the town square. Other worship and meetings are arranged at appropriate times. Easter and Christmas cards are distributed to all houses in the PACT area.

At present the PCC is considering ways to enable its previous policy of giving 10% of unrestricted giving to outreach and mission to be maintained. That

Section Two

totalled ca. £10,000 in 2010. We place great emphasis on support in these areas, through our links with:-

Cecily's Fund, supporting children orphaned by AIDS in Zambia
The Children's Society
Christian Aid
Church Pastoral Aid Society
IDWAL (Inter-Diocesan West Africa Link, with a Diocese in Ghana)
IMC (In Ministry to Children), working with street children in Colombia
MAF – Mission Aviation Fellowship
Mothers' Union
Tear Fund

And more locally with:-

Acorn Trust Healing Centre (Whitehill)
The King's Arms - a meeting place for young people within the town
Home Start Butser – volunteers are trained to befriend families in need
PACT Holiday Club
Petersfield Counselling Service

The Church also has links with the Sheet Village Association.

Recent and Current Initiatives and Issues

There are five:

- i) The reordering of the chancel area to allow more flexibility in services (see earlier).
- ii) A 'Time and Talents' survey. All those on the electoral roll and all other regulars received a questionnaire. The aim was to invite people to consider what they offered in the life of the church against a list of known current church activities, with options to stop, continue or start a given activity.
- iii) The appointment of our 'Families and Children's Worker'. All the funding was raised by donations from within the congregation.
- iv) A call to prayer over a month, as individuals and corporately, concerning discernment of the Lord's possible way forward for the Church. That month ended with a day of prayer and written prayerful input (responses to a loosely formatted questionnaire) from members of the congregation and has informed this parish profile.
- v) A Vision Group has been established by the PCC and charged with assisting the PCC and congregation in discerning the Lord's plan for development of the Church's ministry and life in Sheet over the next 5 years.

Section Three

Our New Leader

We will seek to nurture the faith and ministry of our new incumbent as vicar and leader.

Seeking prayerfully for a new vicar and leader, we believe that he/she should:-

- have a strong and mature personal faith and prayer life.
- have a Christ centred and Bible focused ministry to all ages.
- communicate the Gospel and foster the work of the Holy Spirit.
- emphasise prayer, Communion and lively use of liturgy and creative worship.
- integrate successfully with our wide variety of churchmanship and styles of worship.

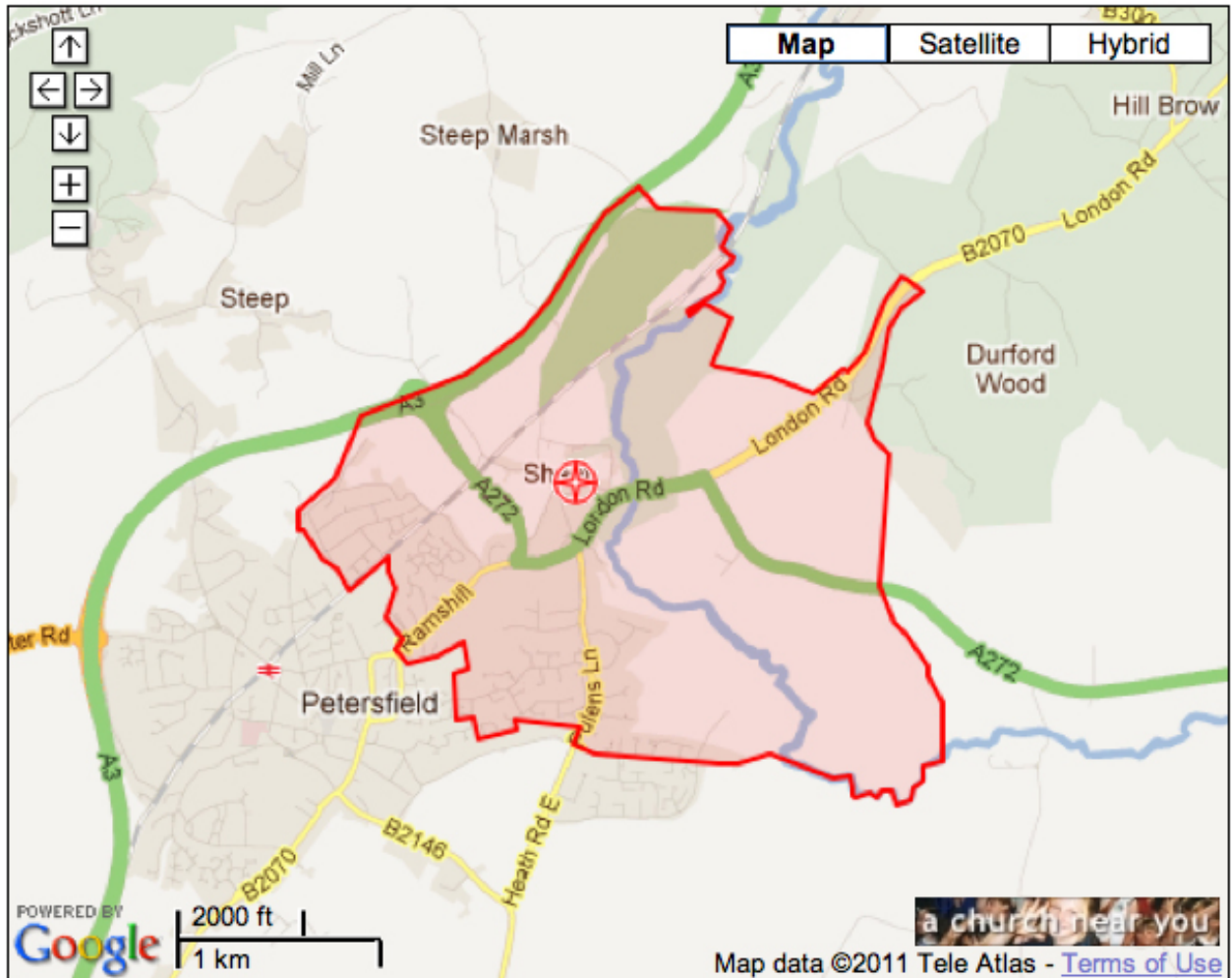
And we see the following as desirable:-

- providing firm but flexible leadership as head of a ministry team.
- drawing out and building on the gifts of others, valuing and nurturing lay ministries.
- having abundant pastoral skills, particularly with the elderly, sick and marginalized.
- engaging with the village community, other local churches, the Deanery and the Diocese.

We are, nonetheless, aware that God may well have surprises for us.

Appendices

Parish Map

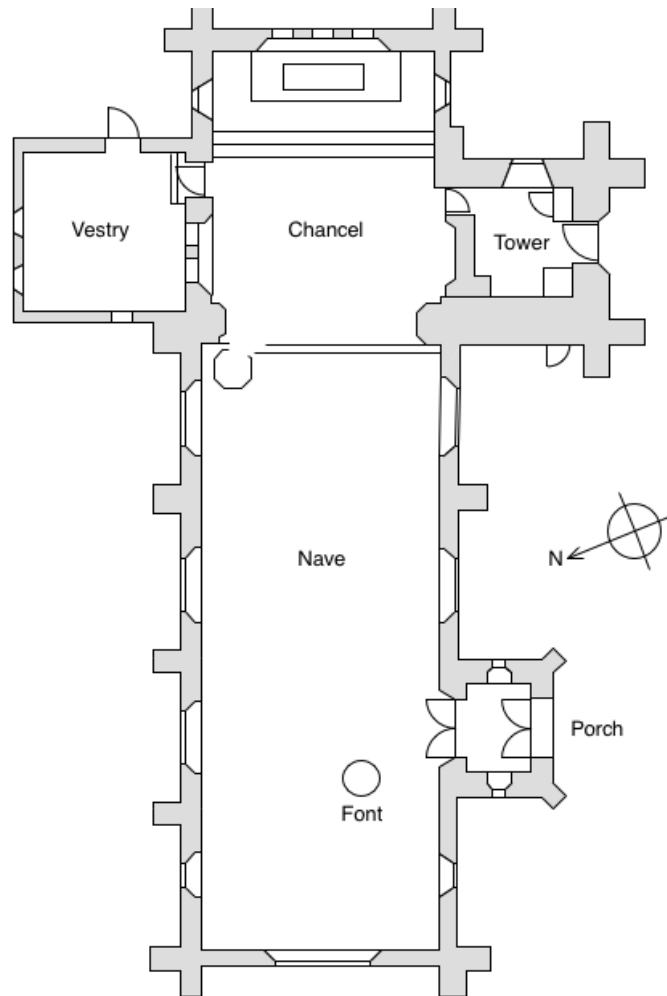


Appendices

The church of St Mary Magdalen, Sheet



Appendices

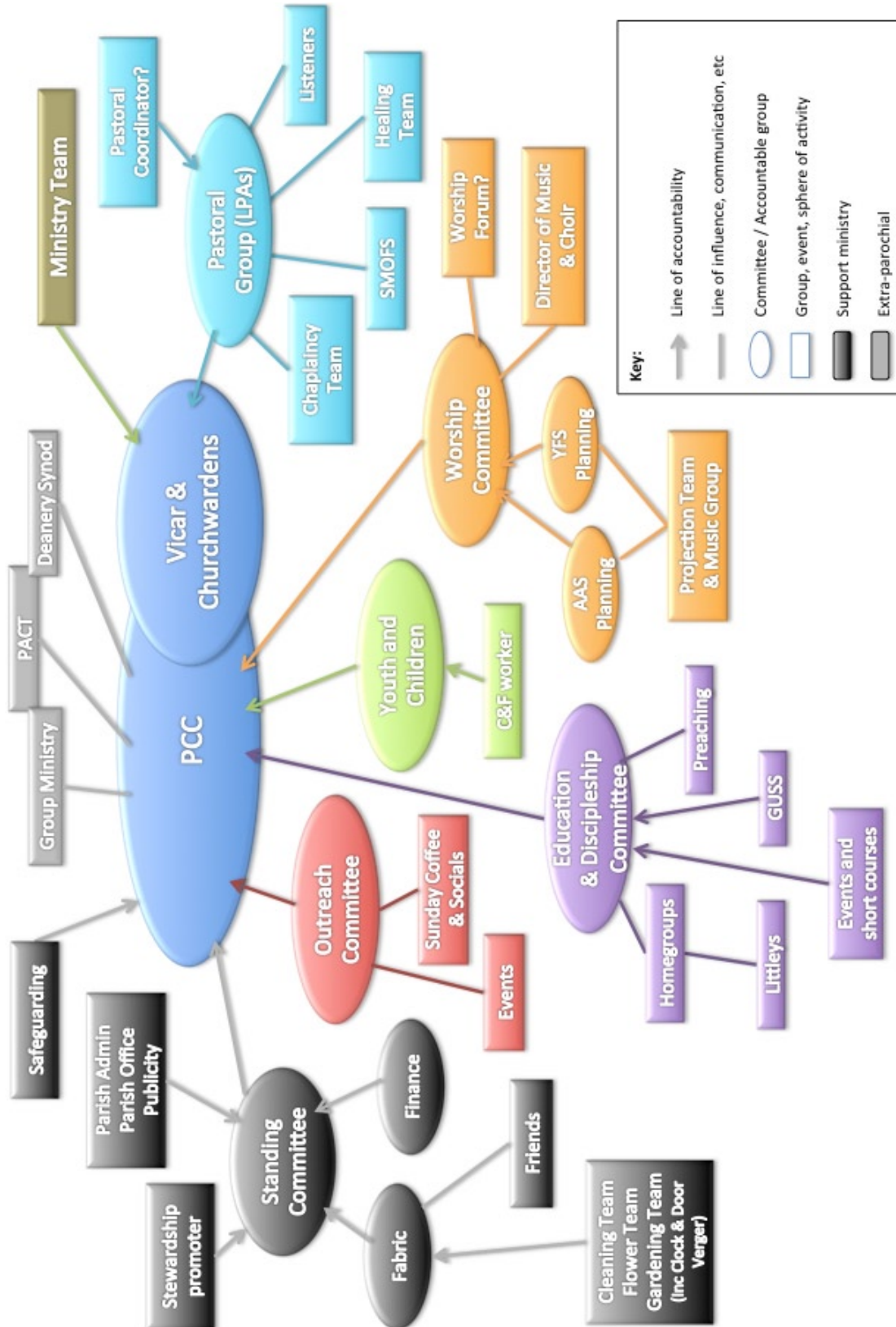


St Mary's is a good example of a simple Victorian country church, typical of its period. Consecrated in 1868 and built in a 13th Century style, it consists of a nave, chancel and clergy vestry plus tower with steeple and South-facing porch; a choir vestry has been added to the opposite side of the chancel.

The quinquennial inspection conducted in February 2011 reported the church to be in good condition with most of the urgent issues highlighted in the previous quinquennial addressed and rectified. The report identified various minor defects (e.g. repointing) which would need rectification. The only urgent matter was the re-fixing of the chicken wire over the belfry louvers to prevent birds getting in to the tower; this has been remedied.

Appendices

Current Administrative Structure



Appendices

Current Pattern of Services and Attendances

1st Sunday	8.00 a.m.	Holy Communion	Common Worship
	10.00 a.m.	All Age Worship	Music Group
2nd Sunday	8.00 a.m.	Holy Communion	BCP
	10.00 a.m.	Parish Communion (with bimonthly Healing Ministry)	Common Worship Choir
3rd Sunday	8.00 a.m.	Holy Communion	Common Worship
	10.00 a.m.	Young Family Service	Music group and Singers
	11.15 a.m.	GUSS (see below)	
4th Sunday	8.00 a.m.	Holy Communion	BCP
	10.00 a.m.	Parish Communion	Common Worship Choir
5th Sunday	8.00 a.m.	Holy Communion	BCP
	10.00 a.m.	Parish Communion	Common Worship Choir

Sunday		Typical Number
8.00 a.m.	Holy Communion	30
10.00 a.m.	All Age (often with baptism)	80
	Young Family Service	50
	Parish Communion	70-100
11.00 a.m.	GUSS	40-50
Average Sunday Attendance		112
(of which children)		15
Wednesday	9.00 a.m. Holy Communion	10-15
Monthly	Evensong	15-20

Appendices

Other services:

- i) Wednesdays at 9.00 a.m. Holy Communion (Common Worship)
- ii) Monthly in Grown-Up Sunday School (GUSS) a speaker spends time tackling one of the bigger or more difficult issues in our faith.
- iii) Sundays at 12.00 p.m.. Occasional baptisms (where the family do not wish the baptism during an All Age Service).
- iv) Monthly evensong at 3.30 (winter) or 6.30 p.m. (summer).

Attendances at other services

Easter Congregations	251 (total)	148 Communicants
Christmas Congregations	648 (total)	231 Communicants

During 2011 there were 11 baptisms, 7 weddings and 8 funerals at St Mary Magdalen.

Appendices

2011 Parish Budget

<i>Expenditure</i>	
Parish share to diocese	77,232
Vicarage expenses	400
Church administration	2,586
Church maintenance	756
Church running	6,808
Worship	1,547
Clergy expenses	1,345
Salaries	7,000
Hire of halls	1,745
Mission giving	10,000
Total	109,419
<i>Income</i>	
Collections	5,850
Gift aided	79,015
Tax refunds	21,851
Fees	2,253
Interest	150
Unrestricted donations	300
Total	109,419