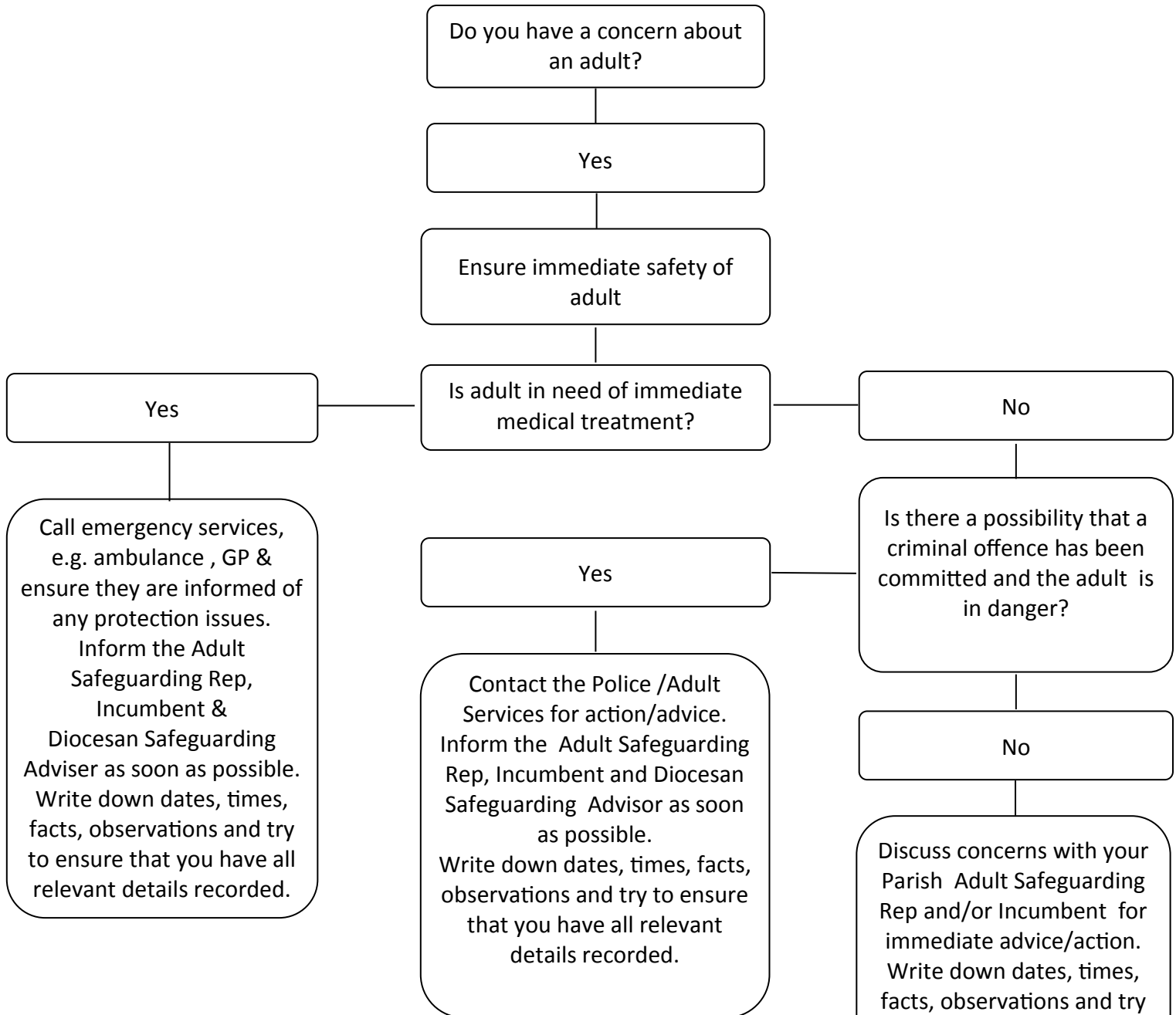


Responding to Disclosures or Suspensions of Abuse for Adults at Risk of Harm



IMPORTANT NUMBERS

Safeguarding Adviser

07544566850

Safeguarding Team

023 9289 9677/665

Hampshire Adult Services

0300 300 555 1386

0300 300 555 1373 (out of hours)

Portsmouth City Council

Adult Social Care Helpdesk

023 9268 0810

Isle of Wight Council

Adult Safeguarding

01983 814980

01983 821105(out of hours)

Police

101 or 999 in an emergency

The Parish Adult Safeguarding Rep must inform the Diocesan Safeguarding Adviser to agree an action plan and/or further referral to statutory agencies.

Make a factual record of events, using the Diocesan Referral form