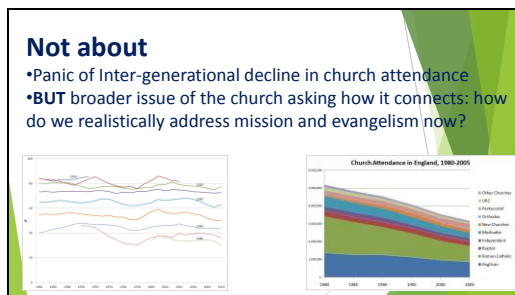


Slide 1



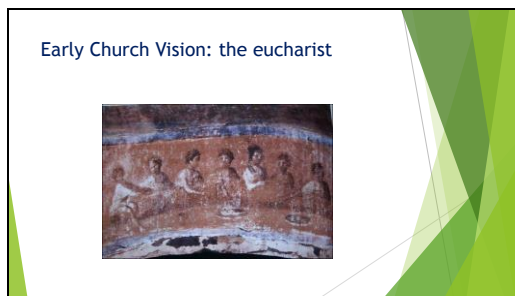
Slide 2



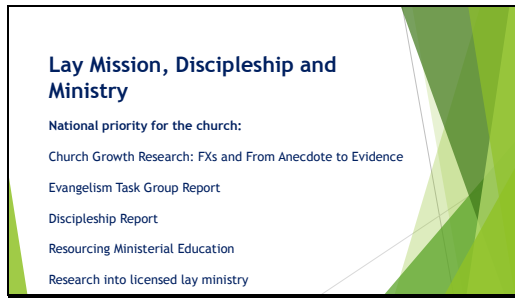
The national church has become aware that it faces significant mission challenges due to inter-generational decline in church attendance.

Since the 1960s the number of people participating in the life of the Church of England has halved. The church urgently needs to reconsider how it connects with younger people, especially those who are disenchanted or alienated from church life.

Slide 3



Slide 4

A slide with a white background and a green geometric pattern on the right side. The text is as follows:

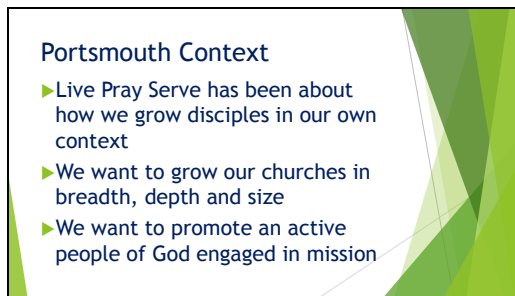
**Lay Mission, Discipleship and Ministry**

National priority for the church:

- Church Growth Research: FXs and From Anecdote to Evidence
- Evangelism Task Group Report
- Discipleship Report
- Resourcing Ministerial Education
- Research into licensed lay ministry

Live Pray Serve is about the Diocese of Portsmouth re-considering its mission context, so that the churches and schools of the diocese are enabled to engage the local communities they serve in ways that resonate in those communities and bring hope and transformation.

Slide 5

A slide with a white background and a green geometric pattern on the right side. The text is as follows:

**Portsmouth Context**

- ▶ Live Pray Serve has been about how we grow disciples in our own context
- ▶ We want to grow our churches in breadth, depth and size
- ▶ We want to promote an active people of God engaged in mission

Slide 6

A slide with a white background and a green geometric pattern on the right side. The text is as follows:

**2 Ideas**

- ▶ Mission, church growth and FXs
- ▶ Lay Discipleship and Ministry

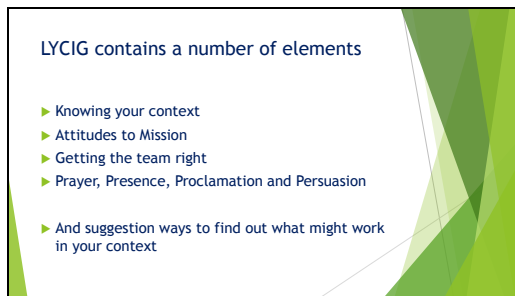
Slide 7



Slide 8



Slide 9



Slide 10

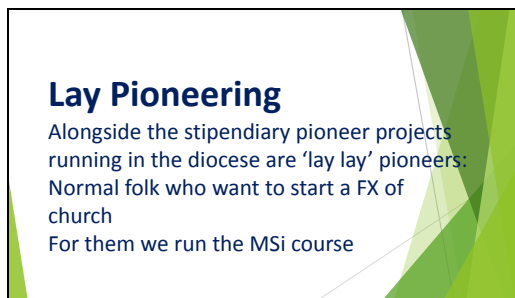


**LYCIG Local**  
Active follow up to help members of congregations and PCCs to plan mission together

Process of working together to come to a shared vision of a way forward for the church community

The 2013 church attendance statistics revealed that the churches in Portsmouth diocese have proportionally greater decline in adult attendance than in neighbouring dioceses, and one of the lowest child attendance ratios in England. Many schools in our diocese remain popular and successful, and some churches in our diocese are engaging effectively with their local communities and have grown in recent years, but we would like to see all churches experiencing similar life and growth.

Slide 11



**Lay Pioneering**  
Alongside the stipendiary pioneer projects running in the diocese are 'lay lay' pioneers: Normal folk who want to start a FX of church  
For them we run the MSi course

Live Pray Serve is a development of Ministry for Mission: it is about thinking about how we can grow as a diocese so that we can make a difference. These three actions, living, praying and serving are seen as the key components of a good Christian life. Live Pray Serve can be seen as a short hand for those characteristics that individuals and church communities should embody to have a full Christian life.

Slide 12



If the church is to re-engage with wider society, we need to have an attractive way of presenting the gospel that is accessible and relevant to those we are attempting to serve. The Live Pray Serve strategy has identified four significant threads in making this aspiration a reality:

- Making disciples:
- Growing churches:
- Learning for life:
- Transforming society:

Slide 13



A number of initiatives have been started in recent years to attempt to reverse this decline. The Rapid Development Programme (rdp), parish Mission Action Planning (MAP), the creation of new pioneer ministry projects, and now a new emphasis on training parishes through Leading Your Church Into Growth (LYCIG). The Live Pray Serve framework therefore reflects work that is already underway to re-engage with wider society.

Slide 14



**Question:**

- ▶ What lay ministries do you need in your church, parish and deanery?
- ▶ What would the training look like?