

# Domestic abuse: A referral pathway for the Isle of Wight

## Definition of domestic abuse

Domestic abuse involves any single incident or pattern of conduct where someone's behaviour towards another is abusive, and where the people involved are aged 16 or over and are, or have been, personally connected to each other (regardless of gender or sexuality). The abuse can involve, but is not limited to psychological, physical, sexual, financial, emotional, threatening and controlling and coercive behaviour.

## Who are the domestic abuse services on the Isle of Wight?

Paragon works across the Island providing dedicated trauma informed support to adults and children from all communities who have or are subjected to domestic abuse. They provide practical and emotional support alongside refuge, safe accommodation, community outreach and IDVA support, counselling, and recovery group work, move on and resettlement services and training.

Hampton Trust work with people using harmful, unhealthy behaviors in their intimate relationships. Support is offered via a range of methods and interventions to address the root cause of behaviors to make positive changes.



Paragon are based on the Isle of Wight and can be contacted on **0800 234 6266** or email: **paragoniow@theyoustrust.org.uk**

## What is a (DASH) risk assessment?

Understanding risk is a crucial part of responding to domestic abuse. The purpose of the DASH risk checklist is to give a clear and consistent tool for practitioners who work with adult victims-survivors of domestic abuse. The DASH helps identify different risks and needs to ensure the most appropriate course of action.

## What is MARAC and HRDA?

MARAC meetings are held monthly and combine up-to-date risk information with a comprehensive assessment of victim's needs, identifying the actions needed to keep them safe and the most appropriate services for all those involved. HRDA is the twice-weekly version on the Isle of Wight of MARAC, discussing the highest risk cases that require a more immediate response.

## What is MASH?

The Multi Agency Safeguarding Hub (MASH) provides triage and multi-agency assessment of safeguarding concerns, with police and children's social care present.

## What is the Victim Care Hub?

The service provides free, independent and confidential support to people affected by crime in Hampshire and Isle of Wight. Available regardless of Police involvement and to non-direct victims such as family, friends, witnesses and community members too. It does not matter when the incident occurred, recent or historic, their aim is to help people manage after crime and feel safer. Their Leading Lights accredited domestic abuse team provide support, risk assessments, safety planning and reassurance in a non-judgmental way.

## Jargon buster

**DASH:** Domestic abuse, stalking, harassment and honour-based abuse. A risk assessment checklist

**IDVA:** Independent domestic violence advocate

**PPNR:** Public protection notification report

**ISVA:** Independent sexual violence advocate

**MARAC:** Multi-agency risk assessment conference

**MASH:** Multi-agency safeguarding hub

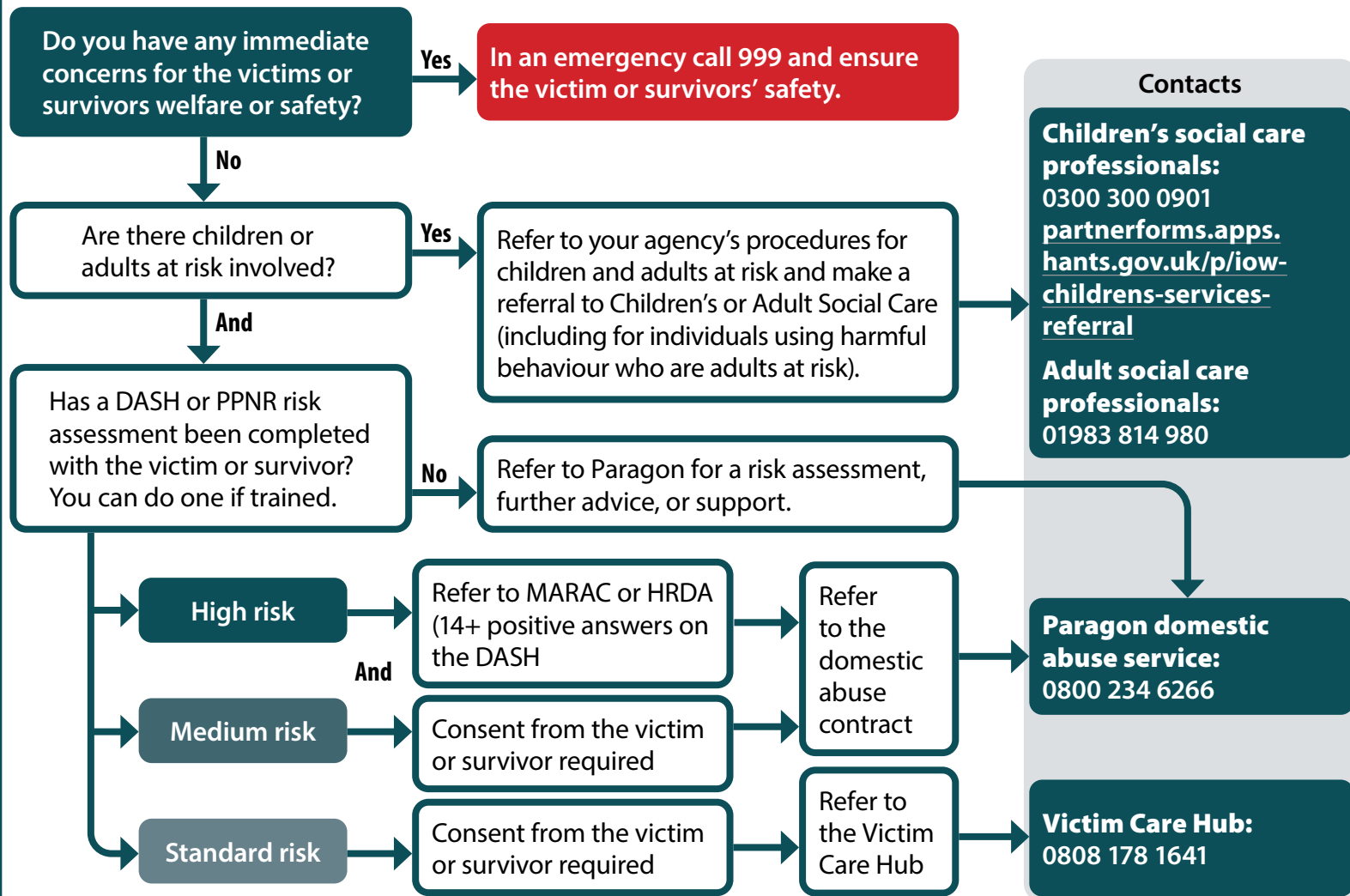
**IARF:** Inter agency referral form for professionals online

**HRDA:** High risk domestic abuse meetings

## Key contacts and services

- **Hampshire Police**  
Call **999** in an emergency and **101** for other calls and enquiries.
- Visit [www.iow.gov.uk/keep-the-island-safe/domestic-abuse](http://www.iow.gov.uk/keep-the-island-safe/domestic-abuse) for information and details about local services and support.
- Isle of Wight Council, domestic abuse service Paragon: **0800 234 6266**
- Hampton Trust: **02380 009898**
- Victim Care Hub (for standard risk victims): **0808 178 1641**
- Hampshire Victim Care Hub [hampshireiowvictimcare.co.uk](http://hampshireiowvictimcare.co.uk)
- Isle of Wight Council Children's Social Care: **0300 300 0901**  
Worried about a child: [www.iowscp.org.uk/worried-about-a-child](http://www.iowscp.org.uk/worried-about-a-child)
- Isle of Wight Council, Adult Social Care: **01983 814980**  
[safeguardingconcerns@iow.gov.uk](mailto:safeguardingconcerns@iow.gov.uk)
- MARAC (Police safeguarding Team): [safeguarding.team.iow@hampshire.police.uk](mailto:safeguarding.team.iow@hampshire.police.uk)
- MASH  
Concerns about a child: **0300 555 1384**  
Out of hours **0300 555 1373** or professionals via the IARF [partnerforms.apps.hants.gov.uk/p/iow-childrens-services-referral](http://partnerforms.apps.hants.gov.uk/p/iow-childrens-services-referral)

## Domestic abuse victim disclosure - what should I do?



**Isle of Wight Council domestic abuse website:**  
[www.iow.gov.uk/domestic-abuse](http://www.iow.gov.uk/domestic-abuse)

**In all cases, undertake these actions with the victim or survivor:**

- Talk to them about safety planning.

- Consider what your agency should do to help them and keep them safe, and which other agencies should be contacted.
- Ask if they want further support or information.

**Service for individuals using harmful behaviour**  
For concerns about anyone using abusive behaviour in their relationships, make a referral or call Hampton Trust on **02380 009898**.