

# ALL SAINTS CHURCH DENMEAD

March 2016

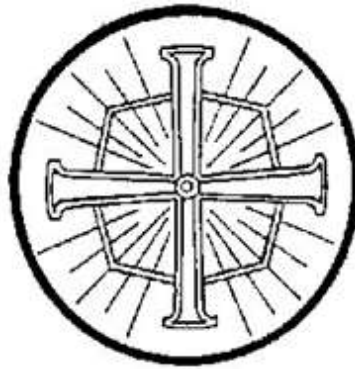
Parish Profile



[www.allsaintsdenmead.org.uk](http://www.allsaintsdenmead.org.uk)

All Saints Church Denmead Charity Registration No: 1134705

**SERVING GOD  
IN THE COMMUNITY**



**Living and Working  
for His Praise and Glory**

## DENMEAD VILLAGE



Denmead is a large, rural village with a population of approximately 7,000 situated in South East Hampshire, 15 miles North of Portsmouth.

Denmead is surrounded by woodland and fields with easy access to the South Downs National Park, but is also only a few miles from Portsmouth Harbour (and continental ferries) and the Solent, giving endless opportunities for leisure activities. Mainline railway stations at Havant and Petersfield are readily accessible as are arterial motorways.

Over the past 15 years there has been a significant increase in housing both within the village and to the west of Waterlooville.

The civil Parish of Denmead covers an area of approximately 1215Ha and includes many traditional farms, public houses and light industry. The nearest shopping centre, apart from village shops, is Waterlooville, three miles away with a population of 64,350.

Village amenities include a Co-op, Post Office, Bakery, Wine Merchant, Pharmacy, Optometrist, Greengrocer, Florist, Fish & Chip Shop, a restaurant, Chinese and Indian takeaways, Men's barber, and two Hairdressing Salons. There are also several pubs located in and around the village. The majority of families, however, travel to Waterlooville, Portsmouth and some out of town superstores for major shopping. Fareham, Winchester, Chichester and Southampton are also readily accessible. Waterlooville also boasts a swimming pool and gym complex.

There is a small Industrial Estate within the village but most residents commute to work in the surrounding centres, especially Portsmouth which is the South Coast's second largest city.

Denmead has a predominantly white population with only 1% being from other ethnic groups and this proportion of racial mix is continued in Waterlooville and the surrounding area, but excluding Portsmouth where the ratio is much higher.

Being close to the Naval Base, the village includes a large number of service and retired service personnel in the population and there is also considerable employment in the civilian side of the defence industries including electronics and associated manufacture.

Housing types vary from old farm houses and thatched cottages to modern estate houses, with a reasonable proportion of retirement and warden-controlled properties. There are also local council (Winchester) and Housing Association properties within the village boundary.

The local area is well served with medical facilities. There is a group practice Health Centre in the centre of the village with a private Dental Suite nearby. The Accident and Emergency Hospital (Queen Alexandra's) is situated 5 miles away in Cosham, and there is also a walk-in centre based at St Mary's Community Hospital in Portsmouth. The Rowans Hospice is nearby and has an active support group in the village.

There is a vibrant community spirit in the village. The Church Hall, Community Centre and Memorial Hall are fully used for both daytime and evening activities. Denmead Communicare group is run by volunteers providing services and activities for the elderly, disabled and people in need.

With a growing community, school places are at a premium. Denmead has both an Infant School and a Junior School. Senior school children travel to Waterlooville (including Oaklands Catholic School and Sixth Form), Cowplain, Horndean, and Petersfield, and there are also fee paying schools in Portsmouth and Petersfield. There are three Pre-schools in the village, and several Mother and Toddler groups.

Denmead is twinned with Saint-Georges-lès-Baillargeaux near Poitiers in the Poitou-Charentes department in western France.

## ALL SAINTS CHURCH in Havant Deanery in Portsmouth Diocese



All Saints Church is situated in the centre of the village, opposite the shops, and has a large car park adjacent to both the church and church hall. The church is open every day and people are encouraged to come in at any time for a visit or quiet prayer. The church hall is attached and the office is open most mornings to help with enquiries. There is a large open garden leading off the car park for anyone to use at any time and is invaluable when it comes to fetes, barn dances or similar activities. There is another, smaller, enclosed lawn for children's groups to play in safely, and a beautifully peaceful, sunny patio leading off the Heath Room in the hall.



All Saints Church was built in 1880 to serve the new village of Denmead, which brought together five hamlets in the ancient Forest of Bere, all originally part of the parish of Hambledon. All Saints was consecrated on 22 November 1880 by the Lord Bishop of Winchester. The first Vicar was the Reverend FC Green who served for 50 years in Denmead. The original building faces due east - west.

The original church was proving too small for modern needs. In August 1996, after much prayer and fund raising, work started on an extension which rotates the principal focus to the north. The foundation stone in the north wall was laid by the Bishop of Portsmouth on Saturday 2 November 1996 and the extended church was consecrated by the Bishop on Sunday 4 May 1997.

The original Sanctuary and choir stalls are now the 'Chapel for Healing and Unity' which is used for small, quiet services or private prayer.



The modern Sanctuary has a raised sanctuary area and removable Communion rails to enable flexible use of the space. This arrangement, together with the moveable seating in the main body of the church, has proved to be most successful in allowing the church building to be fully used for a variety of types of worship, in addition to church fundraising events such as concerts.



The most significant object of any antiquity in the church is the font. It is from the 14<sup>th</sup> or 15<sup>th</sup> century and was originally the font of St Peter & St Paul Hambledon, the mother church of All Saints. During the restoration of Hambledon church in the 1870's it was removed to make way for a new font. In 1880 the ancient font was rescued from Hambledon churchyard, cleaned and presented to All Saints where it was used for the first christening on 8th May 1891.



The organ, which originated from a Methodist Church in Leicester, was thoroughly restored and installed in 1999 with an inaugural concert performed by Dr William McVicker.



### Denmead Village War Memorial Window

The window closest to the door is the village war memorial. It was resolved in April 1917 that a window be erected at the end of the First World War "to the memory of those who have fallen". This window represents Christ's Resurrection and either side of the window are the memorial brasses to the dead of two World Wars. It is normal to find village war memorials where four times as many lives were lost in World War I as in World War II. Hambledon's numbers are 33 and 8. It is interesting to note that in Denmead there are 23 names on the First World War plate and 26 names on the Second. This shows that Denmead's population grew between 1918 and 1939 by a factor of four - a contributory reason for the need to extend the Church in 1996.



There is much more information about the church building and memorials on our website: [www.allsaintsdenmead.org.uk](http://www.allsaintsdenmead.org.uk)

## Church Hall

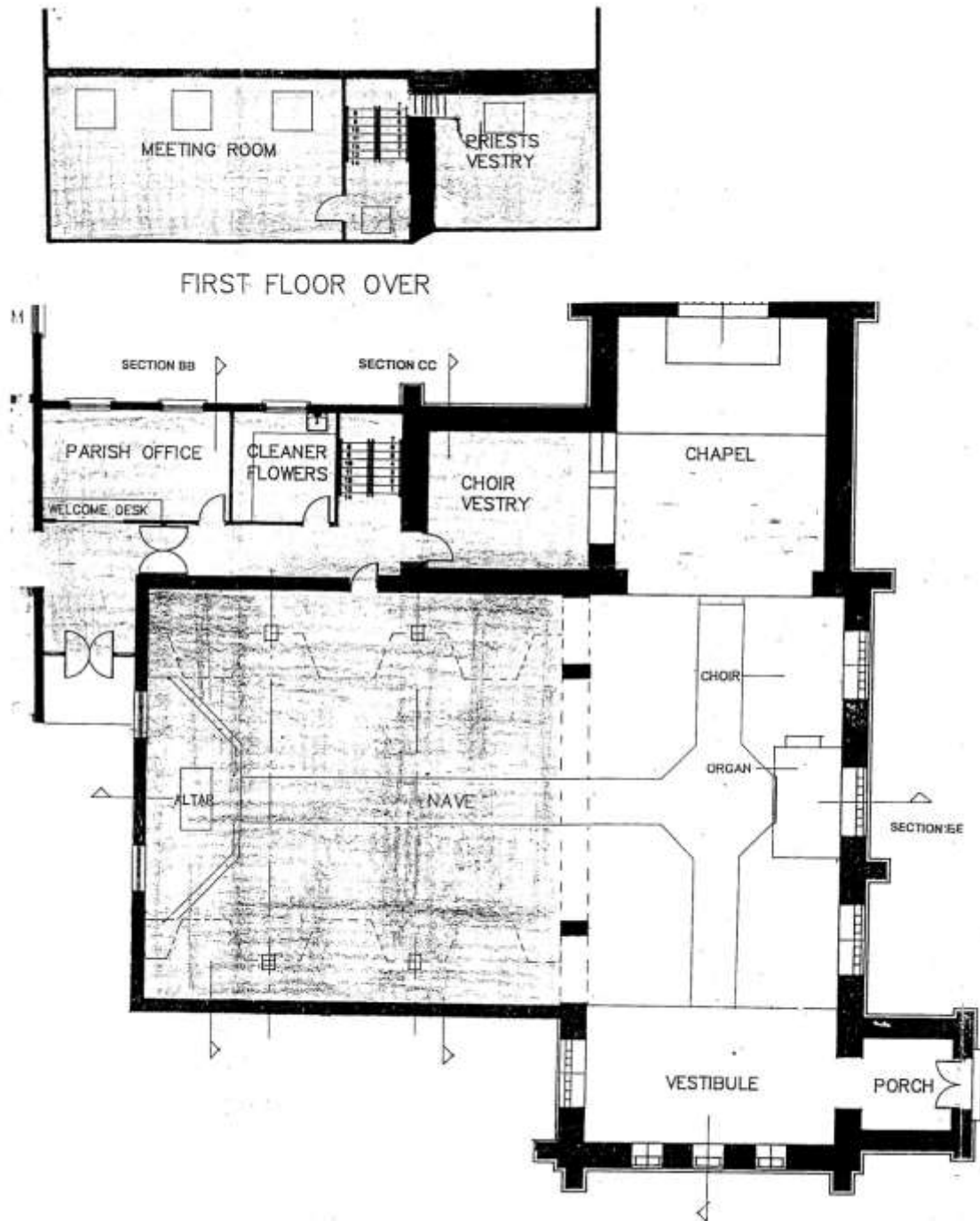
The Church Hall is a large building which was extended following the church extension project. It includes the Church Office, meeting rooms, a servery, toilets, and a main hall which is used for all sorts of activities in addition to the regular Sunday use, such as weekday youth and children's groups, Keep Fit, Baptism and Wedding receptions. Outside are large grounds including a spacious car park and two gardens, one enclosed for young children to play in safety.



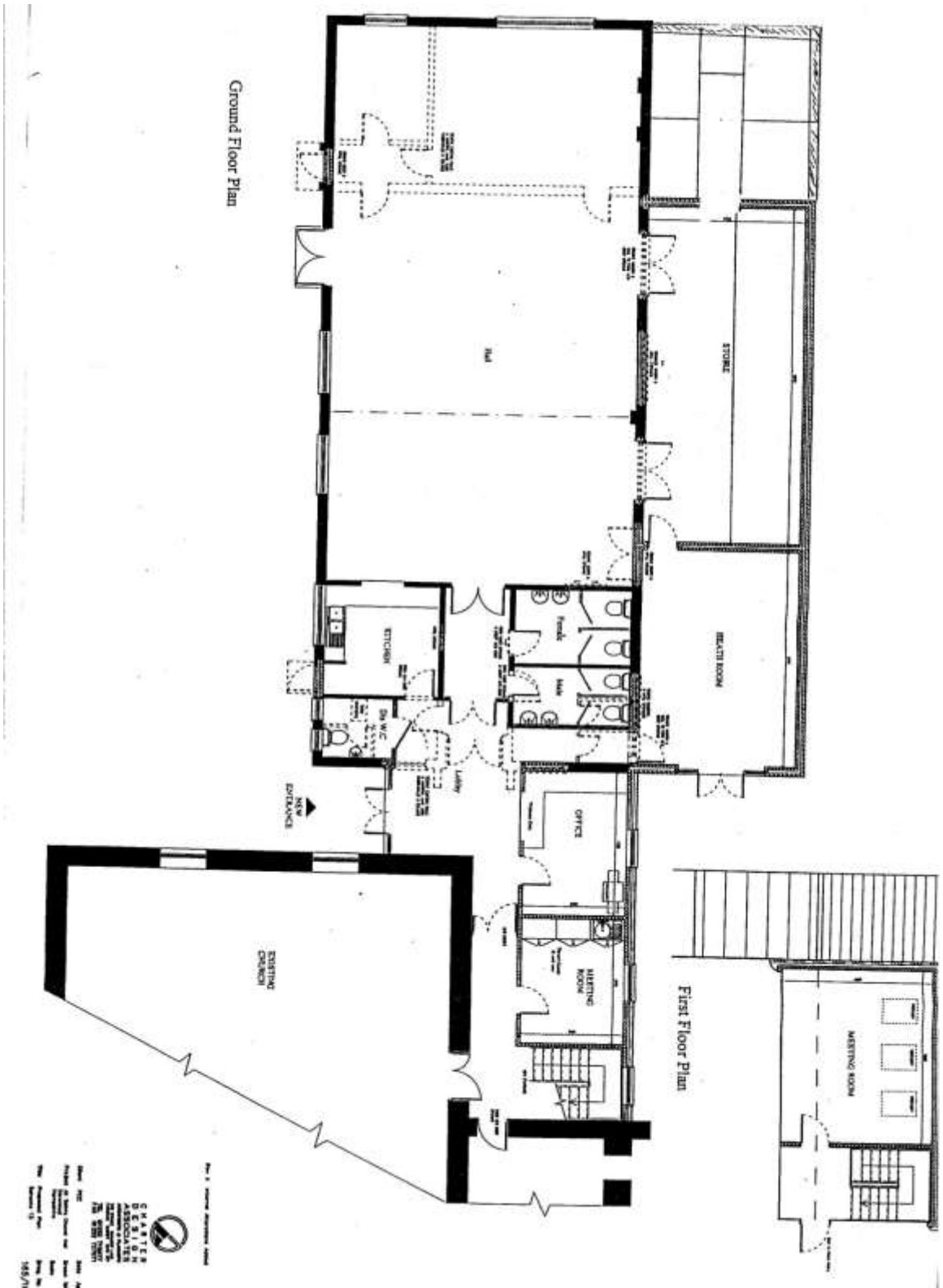
The Heath Room is a separate room off the main hall. It is a warm and comfortable room with an area ideal for making and serving hot drinks for smaller gatherings. Patio doors from this room lead onto a paved patio area.

The village burial ground is situated on land close to the church and is administered by the civil Parish Council.

## CHURCH PLAN



# CHURCH HALL PLAN



ALL SAINTS CHURCH DENMEAD  
ARCHITECTURAL DRAWING  
NO. 1000 (2024)  
DATE: 15/07/24

## VICARAGE

The modern, purpose built Vicarage is a large four bedroom family home, adjacent to the church. The front entrance, study and cloakroom can be isolated from the living area to ensure privacy for both the family and visitors. There is a large, secure, south-facing rear garden, and parking space at the front, in addition to the garage.



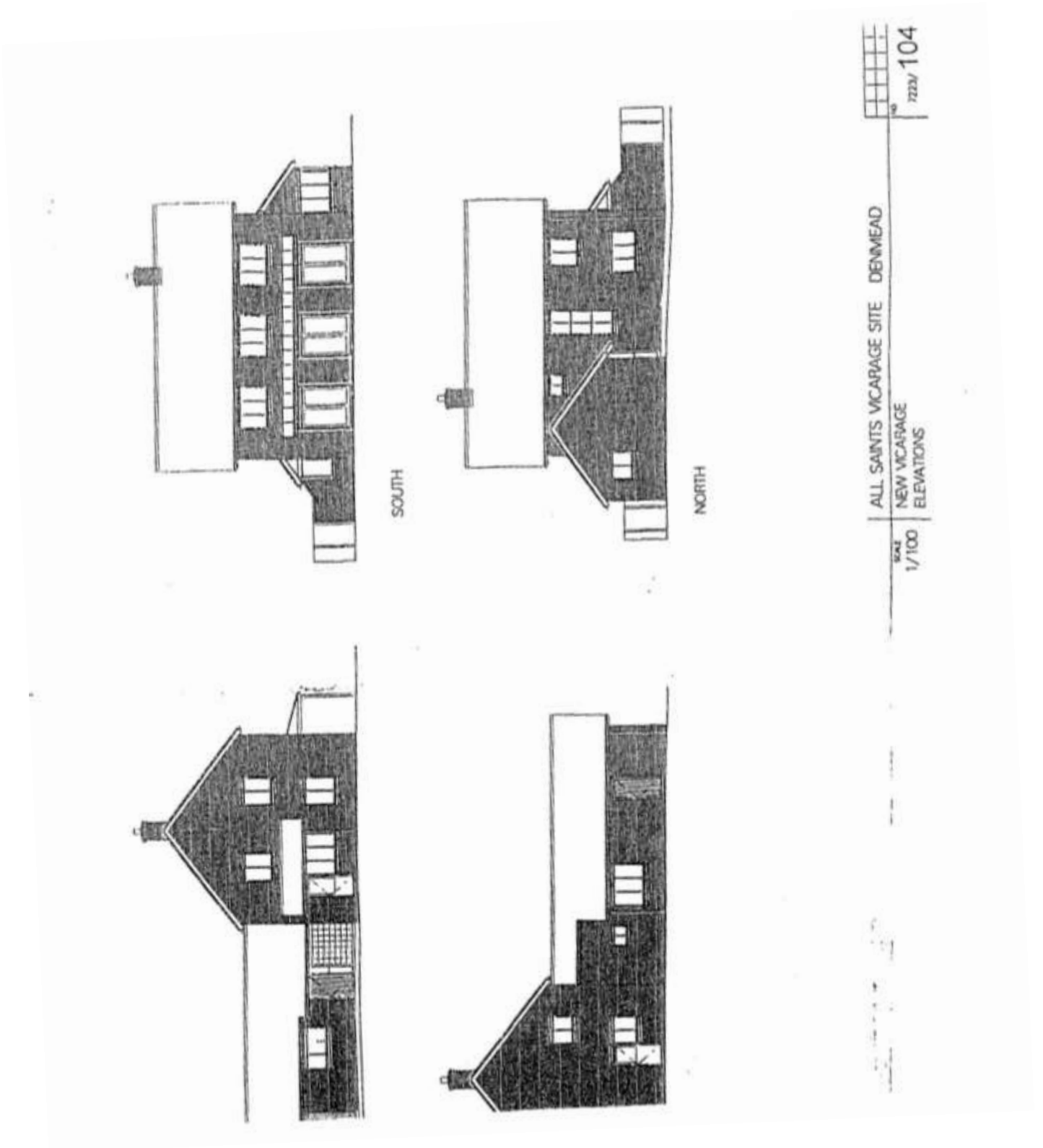


Lounge

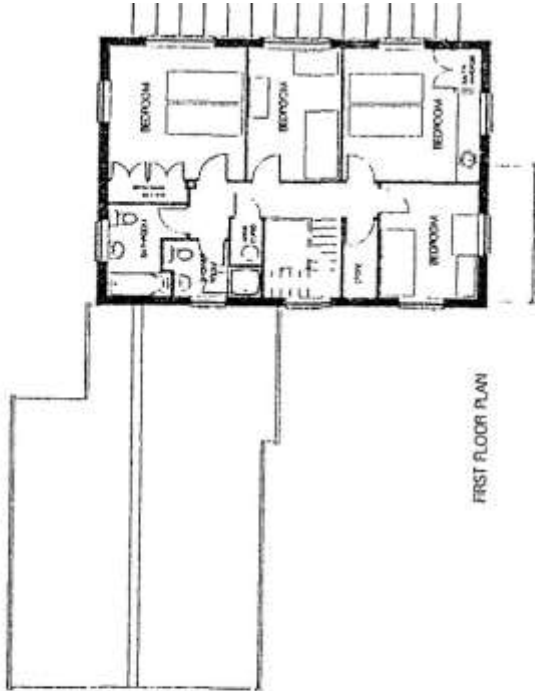
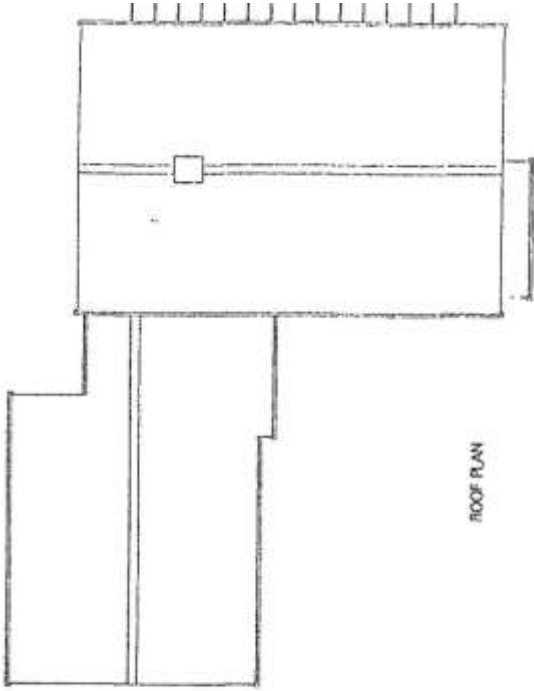


Study

## VICARAGE ELEVATIONS



# VICARAGE FLOOR PLANS



ALL SAINTS VICARAGE SITE DENMEAD  
NEW VICARAGE  
SCALE 1/100  
PLANS



## WORSHIP

All Saints aims to provide a comprehensive range of services meeting the needs of all parishioners throughout the year. To this end there are regular opportunities for worship during the week and varying services on Sundays. We are a family centred church with Communion being at the heart of our worship and we are accustomed to middle-of-the-road Anglican worship. The second Sunday's main service of Family Praise is one of our outreach services, as Baptism families are invited along, with many continuing to attend and become new members of church.

We have a large number of baptisms, weddings and funerals throughout the year.



## Regular Services

We follow Common Worship for all our services.

### Monday – Friday

8.30am Morning Prayer  
5.00pm Evening Prayer

### Thursday

11.00am Holy Communion Order 2

Third Saturday of each month 3.30-5.30pm – [Messy Church](#)

### Sundays

#### 1st Sunday

8.00am Holy Communion Order 2  
9.30am Parish Communion Order 1  
11.30am Baptisms  
6.00pm [Healing Service - gentle and informal with prayer and quiet music.](#)

#### 2nd Sunday

8.00am Holy Communion Order 2  
9.30am [Family Praise - varied, lively service for all ages, without communion.](#)  
6.00pm Sung Evensong

#### 3rd Sunday

8.00am Holy Communion Order 2  
9.30am Parish Communion Order 1  
11.30am Baptisms  
6.00pm [Informal evening worship. A varied programme of services.](#)

#### 4th Sunday

8.00am Holy Communion Order 2  
9.30am [Parish Communion. A more informal service led by the Band.](#) Order 1  
6.00pm Sung Evensong

#### 5th Sunday

8.00 Holy Communion Order 2  
9.30am Parish Communion Order 1  
6.00pm Prayer & discussion, or [Taizé style service - gentle & meditative.](#)

Refreshments are served in the Church Hall every week after the 9.30am service, and on the fourth Sunday a larger spread is laid on to encourage fellowship.

**Average Sunday Attendance**

including children (figures taken from return for October 2015):

First Sunday	104
Second Sunday	108
Third Sunday	88
Fourth Sunday	94
Total	394
Average	99

**Usual Sunday Attendances**

08.00am	25
9.30am	70 (includes children)
6.00pm	12

**Messy Church** 40-60

**Baptisms, Weddings & Funerals**

Year	Baptisms	Weddings	Funerals
2013	20	12	27
2014	31	9	26
2015	27	11	22

**Music**

Our Church Organist sadly recently passed away and we are currently looking for a replacement organist. In the meantime we are relying on the services of visiting and part-time organists. If the new organist would like to start a choir, this would be very welcome! We also have a Band comprising talented musicians of all ages playing a variety of instruments including piano, violin, flute, guitars, trumpet and other instruments.



Family Praise on the 2nd Sunday is a shorter, non-Eucharistic service aimed at all ages. Although the clergy are involved, the planning and running of the services is carried out by three teams of lay people. Recently baptised children and their families are invited to come along to these services and receive their baptismal certificates. Increasingly, Messy Church families are attending. Music is provided by the Band.

The Parish Communion on the 4th Sunday is a more informal service accompanied by the Band.

The Sunday School meets in the Church Hall concurrently with the main services, except for the second Sunday of the month when they participate in the Family Praise service.

Communion after Baptism for young children (7+) was passed by the PCC and for some years we have run a short course of preparation before children are admitted to Communion. The First Communion celebration is enjoyed by the whole church family with gifts and cake.

Older children are invited to join Youth Explorers who meet on the first Sunday of the month during the main service. A Teenage Confirmation course is offered as required and in recent years large numbers of young people have been Confirmed.

Adult Confirmation is offered annually and in the last few years we have averaged five adults per year.



Parishioners enjoying an outing to see 'The Life of Christ' play at Wintershall

## TEACHING

### Children and Young People

Sunday School for children up to 11 years old meet in church at 9.30am and then move into the church hall for activities, re-joining the service for Communion. They meet every Sunday except for the 2nd Sunday when they all come to the Family Praise service.

A crèche, for children up to and including 2 years, is run as required.

At the 9.30am service the children are invited to share with the congregation what they have learned.

The Youth Explorers Group is for teenagers and meets at 9.30am on the 1st Sunday of the month. Some of the young people in this group also act as Servers, play in the Band, help with Sunday School and Messy Church, and help with fund-raising activities throughout the year. They have also very successfully led the popular Crib Service for the past few years and are keen to participate in other services.

### Messy Church

Messy Church is held monthly on every 3rd Saturday from 3.30-5.30pm. It is consistently popular, attracting approximately 30 families, many of whom are regulars, and some have become involved in wider church activities. Families are welcomed into the church hall and invited to participate in a variety of messy activities, from sticking and pasting, painting and splashing, to building and creating ever more inventive illustrations of the day's teaching, including lions, chariots, Goliath, Lazarus, The Temple, and Jonah's Whale! This joyful messy session is followed by a short time in church with a story, songs and prayers, after which everyone piles back into the church hall for a delicious tea. It is hard but rewarding work for the army of volunteers involved.



**House Groups** – currently we have four house groups meeting for Bible study, prayer and friendship.

**Men's Group** – meets for social events and Bible study.

**Lent** – three ecumenical talks are held in the RC, Baptist and Anglican churches, culminating in the Good Friday Walk of Witness. Some of the House Groups follow a Lent Course.

**Confirmation Classes** are run both by clergy and lay members every other year or as numbers dictate.

**Library** - A library unit is situated inside the main church entrance and everyone is welcome to borrow books at no cost. A smaller library is available in the Heath Room which is open daily.

**Schools** – the Vicar leads collective worship weekly at Denmead Junior School, and four times a term at the Infant School. The Vicar also visits Oaklands Catholic School several times a term to offer Communion to the Anglican teachers. Children from Denmead Infant and Junior Schools come into church at Easter, Harvest and Christmas and also at other times in the year for educational visits.



## FELLOWSHIP and OUTREACH

All Saints is an integral, lively part of a thriving village and its members are active in sport, uniformed organisations, schools, politics, charities and interest groups of every sort. All Saints thrives on fellowship and the following are some of the main fellowship and outreach events we enjoy...

**Refreshments** are served every Sunday after the 9.30am service and a more elaborate 'Coffee Plus' on the 4<sup>th</sup> Sunday. Many special occasions, for example Confirmations and church associated anniversaries, are marked by an invitation to stay for refreshments (usually cake and wine!) in the Church Hall.

**We are a Fair Trade Church.** Traidcraft goods are available for sale after the 9.30am service on the fourth Sunday of each month, as well as at other events from time to time.

**House Groups** include a strong element of fellowship.

**Coffee Mornings** are held in the Church Hall every Tuesday and Thursday attracting many regulars and a varying number of visitors, both church-going and others.

**Meet and Eat** is held once a month in the Church Hall for anyone who wishes to enjoy a delicious lunch with friendly conversation.

**Bereavement Fellowship Group** is held monthly for those who have been bereaved at any time and members enjoy tea and fellowship along with a variety of other activities ranging from talks and presentations to trips out for cream teas.

**The Mothers' Union** has a large and active membership and enjoy regular visits from a variety of speakers, social occasions and fund-raising activities in addition to offering a varied pastoral service throughout the parish. The Denmead branch is a vibrant, growing group. Mothers' Union is celebrated at the main service every 3<sup>rd</sup> Sunday.

**Care Homes** There are several care homes in the village. Currently the Clergy are taking Communion fortnightly to the largest home, Green Meadows. The church congregation become 'Rent a Choir' at Christmas to sing carols at two homes.

**Harvest Lunch** and a **Passover Meal** are enjoyed on alternate years.

**Iona** Part of the spiritual life of the parish includes a week-long retreat to Iona and the next visit is in 2017.

**Denmead Parish Chronicle** ([www.allsaintsdenmead.org.uk/parish-magazine](http://www.allsaintsdenmead.org.uk/parish-magazine)) is the monthly parish magazine containing news and events of all three Churches Together in Denmead (CTD) along with village news, diary, and advertisements. It is compiled, edited and printed by volunteers from All Saints, and distributed by volunteers to 1000 homes in the village. Production costs and equipment are met by advertising revenue.

**Art Exhibition** This exhibition has been running every year since 1974 and is held in the Church Hall. It is not associated with any particular art group but its aims are to promote the work of local artists, as well as to raise funds for the church and other charitable concerns. The last Vicar found it very useful for Christmas presents!



**Concerts** The first major concert in church took place in 1997 after the church extension was completed. There followed an annual fund-raising 'Season of Music' for many years until other churches and organisations caught on, which meant that attracting large audiences to our concerts became more difficult. We have, however, retained one regular concert, which raises about £2000 for church funds every year: the Band of HM Royal Marines who have performed here annually since the Season of Music started. This event attracts hundreds of people from a wide area and always sells out months beforehand. We always serve refreshments of canapés and wine during the interval and these are enjoyed as much as the concert! It is a great form of outreach in addition to enabling us to raise much needed funds for charity.



**Sanctuary Guild** members provide the weekly floral arrangements, and the offshoot **Church Flower Club** has an important mission and outreach function, raising money for charitable causes and bringing into the church many who would not otherwise pass through the portals.

**Social Occasions** just for fun are held several times a year and include such events as Horse Race Night, Quiz Evening, Barn Dance, and a Summer Fun Day.

**Mission Supper** is held annually to raise awareness of worldwide situations whilst enjoying food and fellowship.

**Fund raising** events are always great social occasions and include Concerts, Art Exhibition and Christmas Bazaar amongst others.

**Children's Groups** include the Sunday School, Youth Explorers Group, and Messy Church, all of which hold regular meetings with parties and other events.

**DABS** (Denmead Activities and Bible School) is an Ecumenical holiday club which runs for one week every Summer drawing together people of all ages, denominations and walks of life from the village and beyond.

**The Church Hall** is in heavy use by many village groups as a regular meeting place where fellowship is shared.



## MINISTRY

The congregation of All Saints enjoys working together to support the clergy in its various roles, offering a wide range of talents to enrich worship and benefit the local community. Ministry is accepted as the responsibility of the whole congregation.

Regular staff meetings are held to discuss worship and to allocate duties.

The Incumbent is supported by an Associate Priest, a Reader and three retired Vicars. In addition there is a Verger, and teams of chalice assistants, servers, readers and intercessors. We have two Churchwardens supported by a small team of deputies and a hard working maintenance group.

### Lay involvement in the Ministry

Holy Communion is taken as required to those unable to attend Church.

The Family Praise Service is co-ordinated by three teams of lay parishioners who actively lead the service.

There is lay involvement in the Healing Service and its supporting prayer network.

Many people are actively involved in the Pastoral Ministry within the parish, including:

Messy Church

Preparation for adult Confirmation (Catechumenate)

Preparation for Confirmation (young people)

Preparation for Baptism

Bereavement Listening

Marriage Preparation

Visiting the lonely, sick and housebound.

Leading Sunday School and all Church Youth Groups

Leading House Groups

## ECUMENICAL ACTIVITIES

In 1985 a Local Covenant was drawn up between the three Churches in Denmead, these being Denmead Baptist Church, Denmead and Hambledon Roman Catholic congregation (part of the parish of the Sacred Heart, Waterlooville) and All Saints Church. This became known as Churches Together in Denmead (CTD).

Denmead Activities and Bible School (DABS) is a great ecumenical outreach which has been running for over 35 years. DABS is a four full-day holiday club held every August for children aged 0-14 who live in the village or attend village schools. Around 250 children attend along with over 100 adult helpers. Older teenagers come back every year to help run activities. A live Band leads the worship and the day includes Bible stories, craft and drama based on an adventure theme, and sports. On the Sunday following DABS everyone is invited to a DABS celebration service held in All Saints Church, where the songs, music, themes, and films are re-visited!



**DABS in full swing!**



**The DABS Band**

Our Easter preparation includes Lent talks and a joint Good Friday Service with a Walk of Witness. At 6am on Easter Day we greet the Resurrection on the village green followed by a breakfast of bacon butties in the church hall!

CTD organises a Carol Service, usually held on the last Sunday before Christmas, during which we renew our CTD Covenant. The church is packed and all enjoy fellowship afterwards over mince pies and hot drinks.

## ADMINISTRATION

### Key Contacts

Associate Priest:	Revd Sandie Osborne
Reader:	Peter Mitchell
Church Office Admin:	Shirley Powell
Churchwardens:	Tina Cottam Samantha Davidson
Verger and Health & Safety Officer:	Captain John Day
Treasurer:	Mike Barge
Secretary:	Trevor Wright

### Other Contacts

Vice-Chairman PCC:	Derek Gilbert
PCC Members:	Gill Barge, Charlotte Comley, Wendy Jenkins, Carol Moore, Steve Venn, Pam Jones, Richard Hallett, Fritz Simpson, Julia Parsons, Diana Dey, Don Tocher
Havant Deanery Synod Reps:	Diana Dey, Julia Parsons
Covenants Secretary:	Mike Barge
Safeguarding Representative:	Nicola Ellis
Mothers' Union:	Julia Parsons
Sunday School supervisors:	contact via Church Office & Churchwarden
Youth Groups Activities:	contact Gill Barge
Church Website Admin:	Steve Venn

### Church Hall

Bookings:	Brenda Wright
Chairman:	Trevor Wright

### Parish Chronicle

Editor:	Charlotte Comley - contact via Church Office <a href="#">email here</a>
Village Diary Editor:	Gill Barge
Advertising:	Vi Day - contact via Church Office <a href="#">email here</a>
Distribution:	Capt. John Day
Treasurer:	Revd Stuart Cleaver

## Parochial Church Council Structure

All Saints Parochial Church Council (PCC) has the Incumbent as Chairman.

Elected Officers:

- Vice Chairman
- Treasurer
- Secretary
- Churchwardens (2)
- Church Hall Manager

All the above form the Standing Committee of the PCC.

The PCC meets eight times a year or more according to necessity. The Standing Committee meets in advance of PCC meetings to discuss and set the agenda. One PCC meeting each year is specifically allocated for Policy rather than Business matters, and the meeting before Christmas includes a social event at a member's home. The Annual Parochial Church Meeting is held in April each year.

The Church Office is open Tuesday – Friday mornings from 9am – 12 noon. The Office Administrator deals with all general enquiries and church administration under the direction of the Vicar which enables the Vicar to focus on pastoral needs.

The Electoral Roll was last updated in 2015 with a total of 215 names. It is maintained by a volunteer member of the Roll.

## FINANCE

All Saints works on a tight annual budget and has no endowments or major financial patrons. However, exceptionally, as a result of a small number of generous bequests/donations in the last 10 years, a reserve of £114K (equivalent to 14 months income) is held in the General Fund for unforeseen emergencies. A further £20K is currently held in the Fabric Fund for future major repairs to the church, £14K in the Organ Fund and £19K in the Hall Fund. The Fabric and Organ Funds are both 'Restricted'.

Annual expenditure is dominated by the Diocesan Parish Share which in 2016 is expected to be £69.4K. Church running expenses are forecast to cost a further £24.9K. The Church Hall and Parish Magazine are currently both operating successfully and trading income exceeds expenditure. The church aims to donate 7% of its income each year to Mission Giving and charitable grants, and also holds specific fund raising activities for external charities.

In 2016 forecast income from planned giving and collections is £74K and Gift Aid recovery should produce a further 16.5K. Fundraising is forecast to generate £5K, fees £4K and interest and dividends £3K.

Despite a proactive annual stewardship campaign, giving by the congregation has not risen significantly in recent years and there is an added threat that the majority of giving comes from the older members of the congregation (those over 70). The PCC must always be kept mindful of this issue and work to enrol new members into the planned giving scheme.

## **MISSION PRIORITIES**

### **Live, Pray, Serve...**

Our current mission priority is to increase our impact on the population of our village.

Recent years have seen the construction of large housing developments both within the village boundary and closer to Waterlooville, the latter being within our ecclesiastical parish. We have a great opportunity to forge links with the growing population. Our challenge is to find ways of communicating with the local community and working alongside them to enhance fellowship and outreach, without neglecting the established residents.

We aim to address this by:

- putting into practice our mission statement: 'Serving God in the Community' by understanding our community's needs and finding opportunities to share God's love in very practical ways
- building on our work with children and young people to grow a church which includes all generations
- finding ways of outreach and evangelism that connect with people outside the church
- effectively communicating who and what we are
- enriching our ecumenical partnership in the village (Churches Together in Denmead).

## **WIDER MISSION**

Projects run by other agencies in the village are well supported by church members including: a weekly luncheon club; the Communicare mini-bus which takes senior citizens shopping and on outings; volunteer hospital driving; DABS which has many members of the congregation involved in its planning and running.

We continue to work alongside the existing agencies in the village, eg. the Parish Council, schools, uniformed organisations, care homes, and community mental health teams.

We hope to be part of the national churches funeral and baptism projects. We have very close links with the village funeral director.

The parish participates in the activities of Havant Deanery and the Diocese of Portsmouth, and belongs to a cluster of parishes created through the Deanery Synod which offers support to Incumbents and their parishioners.

There is an active Home and Overseas Group which initiates and co-ordinates much of All Saints' commitment to the wider Church.

### Ghana

All Saints has been linked with St Pauls Church in Tafo Ghana since 2001. We have visited our link parish most years with the emphasis of the visits being developing and maintaining friendships, and the exchange of ideas.

All Saints has also been able to support St Pauls in building the new Church and are currently helping them to build the Mission house next to the church. Both churches have lay co-ordinators who keep in touch with each other and we have regular news from St Pauls.

We have been able to bring some people over from Ghana, and although visas continue to be difficult to obtain we are hopeful that we can bring a group over to visit us this year.



Inside St Paul's Church at Tafo Akim

## WHAT WE ARE LOOKING FOR IN OUR NEW VICAR

We are seeking and praying for an active and practical Vicar who will guide us in our faith and mission to serve God in the community. They will:

- lead us in our mission priorities
- have the leadership qualities necessary to inspire the ministry team, the churchwardens and the PCC
- nurture the gifts of volunteers and develop the next generation of lay leaders in our church
- reach out to younger generations and love and value older generations
- help us to develop effective methods of communication
- show a commitment to enriching our ecumenical partnership in the village
- have the organisational ability to devote the necessary time and energy to both Parish and Deanery responsibilities.

## WHAT WE OFFER YOU...

All Saints is a friendly and inclusive church, blessed with a caring team of clergy and lay people who will welcome and support you. The congregation appreciates all that the current team does with them, have been fully informed about the preparations made for the interregnum and new incumbent, and are very supportive.

The Vicarage is a modern, spacious and comfortable family home in the heart of the thriving village which has good transport links and beautiful countryside on the doorstep.

The fabric of the church is sound and current finances are good. There are no ongoing building projects and the latest Quinquennial inspection produced a positive report with few minor repairs.

## ALL SAINTS CHURCH

## SERVING GOD IN THE COMMUNITY

**Living and Working for His Praise and Glory**

